

4340929 000 2023

U.S. PUBLIC LAND SURVEY MONUMENT RECORD

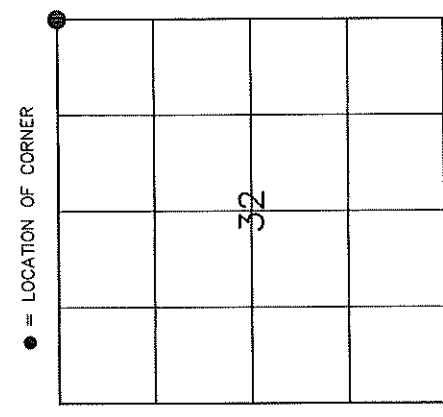
HISTORY OF ORIGINAL CORNER ESTABLISHMENT AND SUBSEQUENT RESTORATION AND DESCRIPTION OF ANY RECORD, MONUMENT OCCUPATIONAL, TESTIMONIAL OR OTHER EVIDENCE CONSIDERED:

THE ORIGINAL CORNER WAS SET BY J.L. NOLIN IN 1864 WITH BEARING TREES OF

- 8" HEMLOCK S52°W 24 LINKS
- 10" HEMLOCK S55°E 20 LINKS
- 8" HEMLOCK N73°E 5 LINKS
- 12" MAPLE N61°W 40 LINKS

1937 - KILROE DID A RESURVEY OF THE AREA SETTING THIS CORNER AND WITNESS CORNERS.

1994 - TOM ARNOTT FOUND THE WITNESS MONUMENT AND SET AN IRON PIPE AND ADDITIONAL TIES
 2023 - LOCAL RESIDENT STATED THAT A PRIOR OWNER HAD REMOVED ALL THE TIES THAT ARNOTT HAD SET BUT NOT THE PIPE. WE LOCATED SOME IRONS FROM A MAP THE ARNOTT DID IN THE SE - SE OF 29. USED THOSE CALCULATION TO HELP US FIND THE IRON PIPE ARNOTT SET.

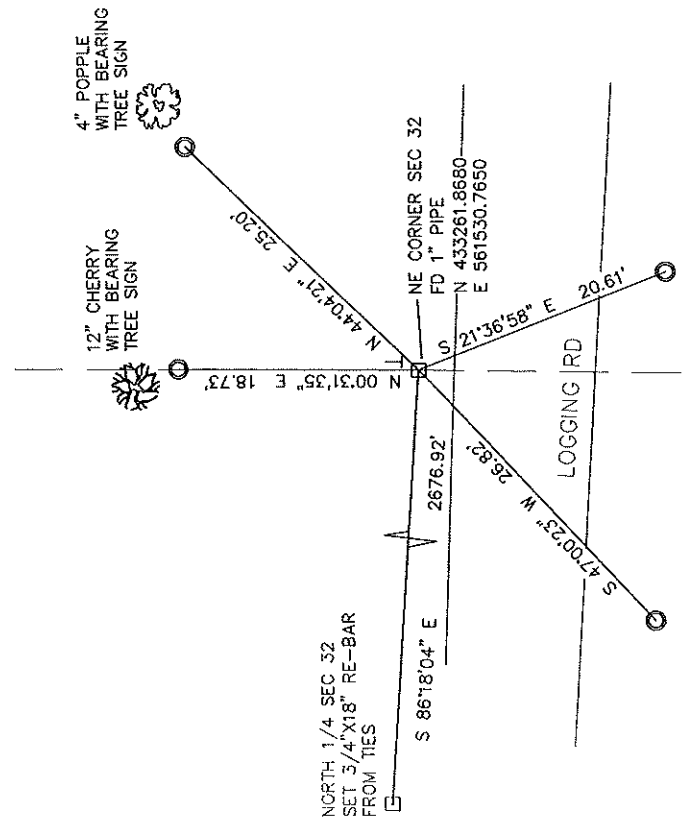


SECTION 32
 TOWNSHIP 34 NORTH, RANGE 9 EAST
 TOWN OF PARRISH
LANGLADE COUNTY, WISCONSIN

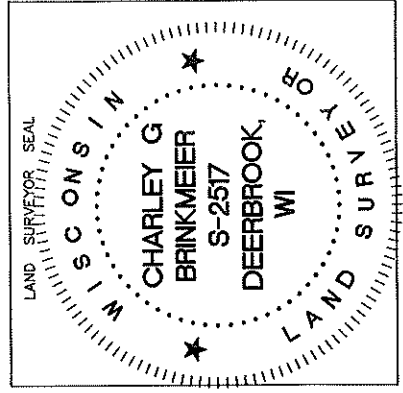
CORNER WAS: (CHECK ALL THAT APPLY)

- RESTORED THROUGH ACCEPTANCE OF AN OBLITERATED EVIDENCE LOCATION
- RESTORED THROUGH ACCEPTANCE OF A FOUND PERPETUATED LOCATION
- CONSIDERED A LOST CORNER AND REESTABLISHED THROUGH LOST CORNER PROPORTIONATE METHODS (INCLUDE A PLAN VIEW DRAWING SHOWING DISTANCES AND DIRECTIONS TO OTHER PUBLIC LAND SURVEY CORNERS USED FOR PROPORTIONING AND DETERMINING THE CORNER LOCATION)
- RESTORED OR REESTABLISHED IN A LOCATION THAT DIFFERS FROM A PREVIOUS RESTORATION OR REESTABLISHMENT (INCLUDE A PLAN VIEW DRAWING AND INDICATE WHAT WAS SET AND/OR FOUND)
- CHECK IF THERE IS ADDITIONAL INFORMATION ON BACK

DESCRIBE THE MONUMENT AND ACCESSORIES USED TO PERPETUATE THE LOCATION OF THE CORNER. (INCLUDE A PLAN VIEW DRAWING AND INDICATE WHAT WAS SET AND/OR FOUND) ALSO INCLUDE FOUR TIES TO THE SECTION CORNER AND DESCRIPTION OF THE TIES.



SET 3/4"X 30" RE-BAR AT ALL TIE LOCATIONS
 BEARINGS REFERENCED TO THE LANGLADE COUNTY COORDINATE SYSTEM
 T - SET 6' WHITE T-POST



CHARLEY G. BRINKMEIER
 (Type or print name) CERTIFY THAT THE CORNER LOCATION SHOWN ON THIS RECORD WAS DETERMINED BY ME OR UNDER MY DIRECTION AND CONTROL AND THAT THIS U.S. PUBLIC LAND SURVEY MONUMENT RECORD IS CORRECT AND COMPLETE TO THE BEST OF MY KNOWLEDGE AND BELIEF.

 SIGNATURE

 DATE
 SEPT 30 2023

V9 34-9

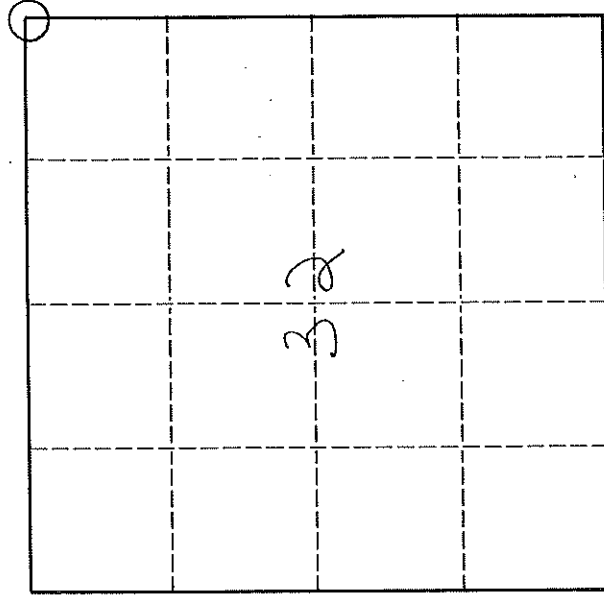
INDEX NO.

U. S. PUBLIC LAND SURVEY MONUMENT RECORD

INSTRUCTIONS:

This record shall show the location of the corner and shall include all of the following nine elements (a through i).

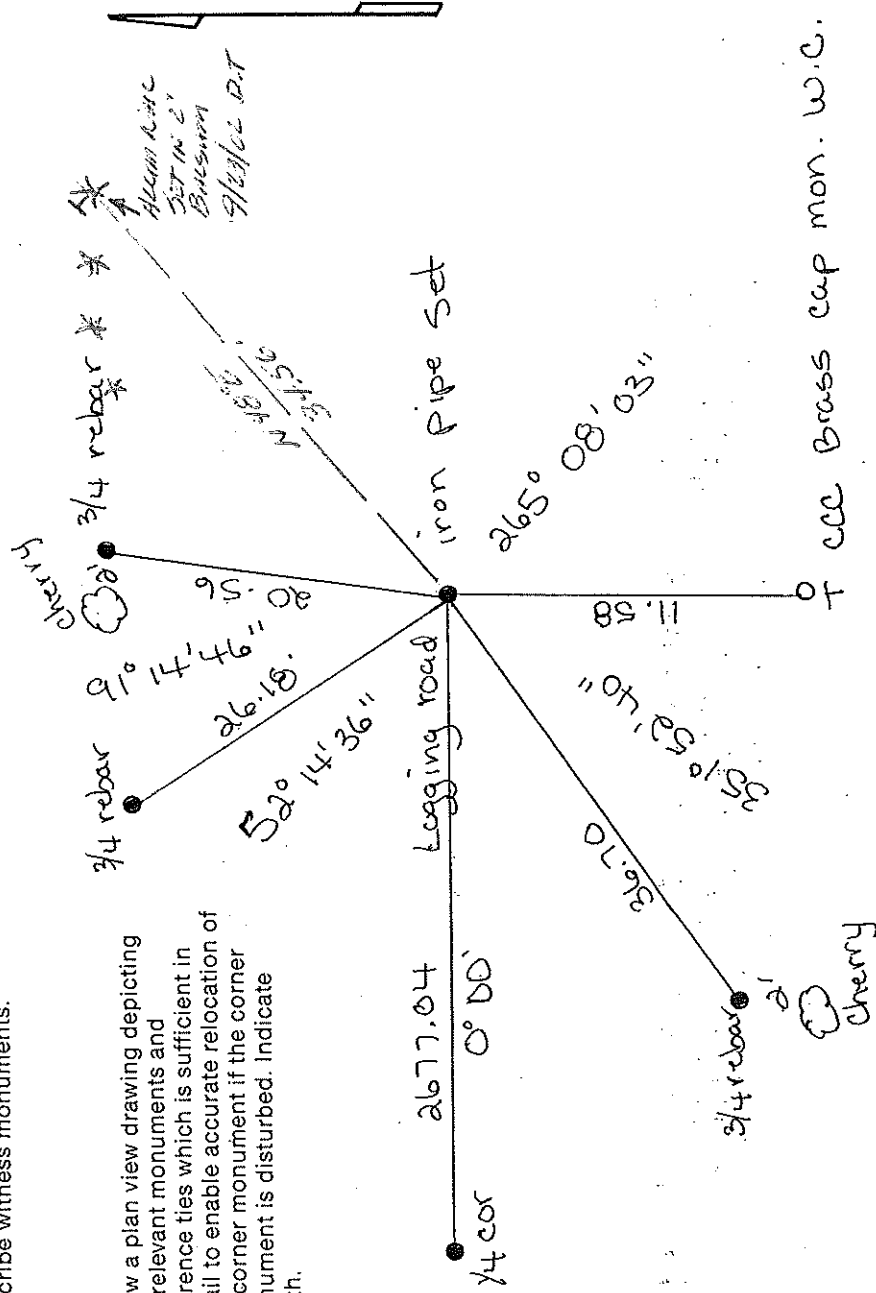
- (a) Identify the corner by reference to the U.S. public land survey system.
O = Corner monument restored.
- Sec. Cor. 28, 29, 32, 33
T34N, R9E



- (b) Describe any record evidence, monument evidence, occupational evidence, testimonial evidence or any other material evidence you considered, and whether the monument was found or placed.

Found 4" steel pipe with brass cap witness corner along south side of logging road. Nothing was found in the road. Brass cap is stamped "11.2' N. to cor.". I set an iron pipe for the section corner at 11.2' north of the witness corner. I then removed, re-dug, straightened and reset the witness monument, and measured to it as shown in the sketch below.

- (c) In the plan view drawing below, provide reference ties to at least 4 witness monuments, or, if the location is within a municipality, to at least 2 witness monuments. (Witness monuments shall be made of concrete, natural stone, iron or other equally durable material.) Describe witness monuments.



- (d) Show a plan view drawing depicting the relevant monuments and reference ties which is sufficient in detail to enable accurate relocation of the corner monument if the corner monument is disturbed. Indicate north.

of ecc Brass cap mon. w.c.

Describe any material discrepancy between the location of the corner as restored or reestablished and the location of that corner as previously restored or reestablished by distance and direction. Show the discrepancy on the plan view drawing under (d), above. Show the distances between the corner as previously restored or reestablished and (1) the corner as restored or reestablished, and (2) to at least 2 of the witness monuments shown on the drawing in (d), above.

N/A

(f) Was the corner restored through acceptance of (1) an obliterated evidence location, or, (2) a found perpetuated location.?

2

(g & h) Was the corner reestablished through lost corner proportionate methods? If so, show the method, including the directions and distances to other public land survey corners used as evidence or used for proportioning in determining the corner location.

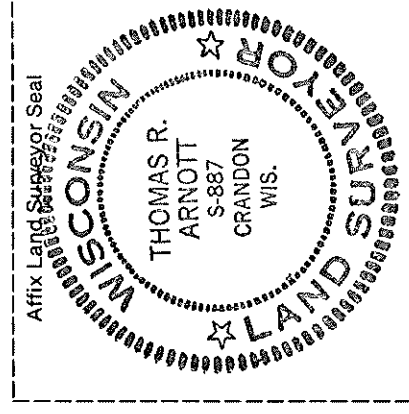
No

(i) I, Thomas R. Arnott S-887 (type or print name)

certify that the corner location shown on this record was determined by me or under my direction and control and that this U.S. Public Land Survey Monument Record is correct and complete to the best of my knowledge and belief.

Thomas R. Arnott
Signature

15 Dec 94
Date



CERTIFIED LAND CORNER RESTORATION

Index No. V-9
34.9

State of Wisconsin }
County of Langlade } ss.

Raymond J. Hallisy
I, _____, do hereby
certify that on the 30th day
of October, 19____, I found
evidence of the Section
corner of 28, 29, 32, & 33
Township 34, North, Range
9E, Fourth Principal Meridian,
as described hereon; and that from this evidence
I established a new monument and accessories
as described hereon to perpetuate the original
location of this corner.

Resident witnesses:

.....
.....
.....

History of original corner establishment:

Corner set in the 1930 resurvey.

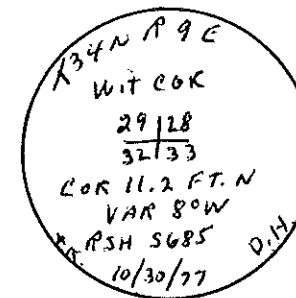
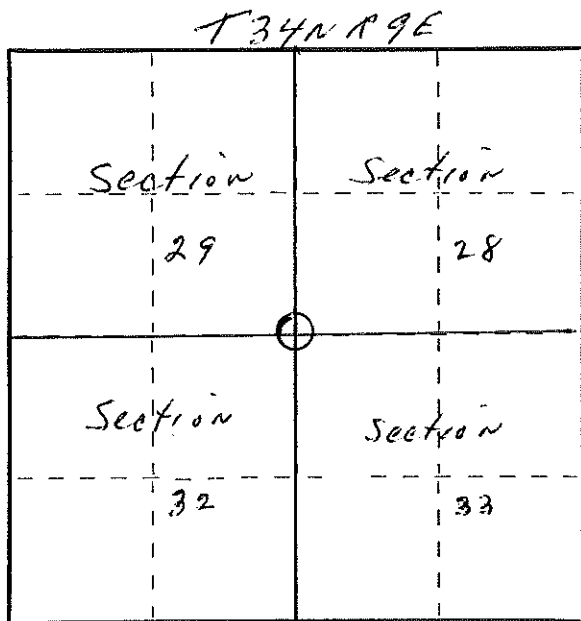
Description of corner evidence found:

4" iron pipe with brass cap just south of pasture road.

Description of monument and accessories I established to perpetuate the original location of this corner.

No trees are nearby for BT's
I put a rock mound around corner

FORM 985 R. C. MILLER CO., MILWAUKEE



Dated at Antigo, Wis., this 30th day of October, 1977.

Signature Raymond J. Hallisy Title Land surveyor Registration No. 5685
(County Surveyor, Registered Land Surveyor, or other duly authorized official)

Office of Register of Deeds, County of _____, I hereby certify that the within
instrument was filed in this office for record on the _____ day of _____, 19____
at _____ o'clock _____ M.

.....
(Register of Deeds)

By _____ Deputy