

LANGLADE COUNTY U.S. PUBLIC LAND CORNER RESTORATION

The Quarter corner common to Sections 5 & 6, T33N, R09E, Langlade County, WI.

4330906 2000 2024

Corner was: (check all that apply)

- Restored through acceptance of an obliterated evidence location.
- Restored through acceptance of a found perpetuated location.
- Determined to be lost and re-established through proportionate methods.
- Show bearings and distances to PLSS corners used for proportioning, and show original distances).
- Restored/recovered/re-established in a location that differs from a previously established position.
- (Show difference in plan view below).
- Check here if additional information is shown on the reverse side of this form.

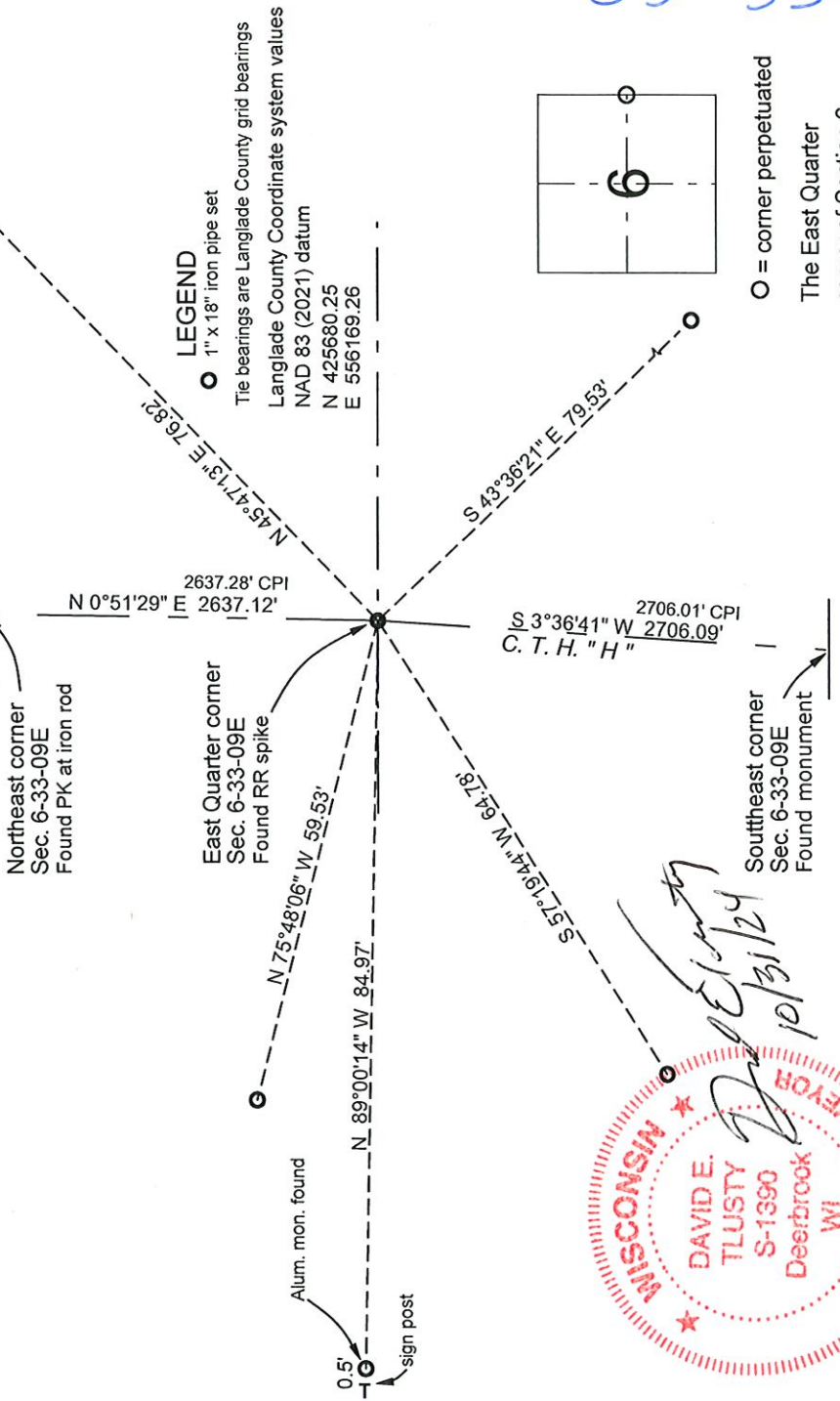
Corner history:

The corner was originally established by Hiram C. Fellows on October 5th, 1860. Original bearing trees: birch, 12", N70W, 10 links and a birch, 14", S50E, 12 links. In County records, FB94, Pg. 132, in May, 1914, Malcom Hutchinson ran north between 5 & 6 from ¼ post (this corner) one orig BT; at 40.03 ch int. sec line. 37 lks W of stone in rd. He also ran south between 5 & 6 from this corner post and at 40.93 chains hit section corner. The 1930's resurvey notes are not available but the 1930's resurvey map shows that this corner was found. On a Certified Land Corner Restoration form dated April 24th, 1981, Consolidated Paper Inc. (CPI) surveyor Daniel Pleoeger said "recovered a 4" iron pipe filled with concrete and capped with a 4" dia. brass cap...". He found the witness corner set in the 1930's resurvey and from it, set a ½" x ¾" bolt in C.T.H. "H" for true corner, 50 links east of witness corner. He also set a 2" aluminum pipe witness corner, 85.00 feet west of the true corner in road. In May, 2024, I found the 2" aluminum pipe witness corner and 84.97 feet east of it, I found a RR spike, 0.25' below pavement. Measured distances from this spike to the corners to the north and south agree with the CPI survey map. I accept the railroad spike as the best evidence of a perpetuated location for the corner.

Physical description of the monument set:

For the corner, I left the RR spike in place.

Describe the accessories used to perpetuate the corner. Include a plan view drawing and accessories found/set. Describe measuring point on bearing trees. Show any topographic features that would aid in future recovery of the corner.



I, David E. Tlusty, Wisconsin Professional Land Surveyor S-1390, do hereby certify that the corner location and perpetuation shown on this record was made by me and that this U.S. Public Land Survey Monument Record as required by AE7.06 of the Wisconsin Administrative Code is correct to the best of my knowledge and belief.

O = corner perpetuated
The East Quarter corner of Section 6, T. 33 N., R. 09 E., Langlade County, WI

C5 33-09

CERTIFIED LAND CORNER RESTORATION

Index No. C-5

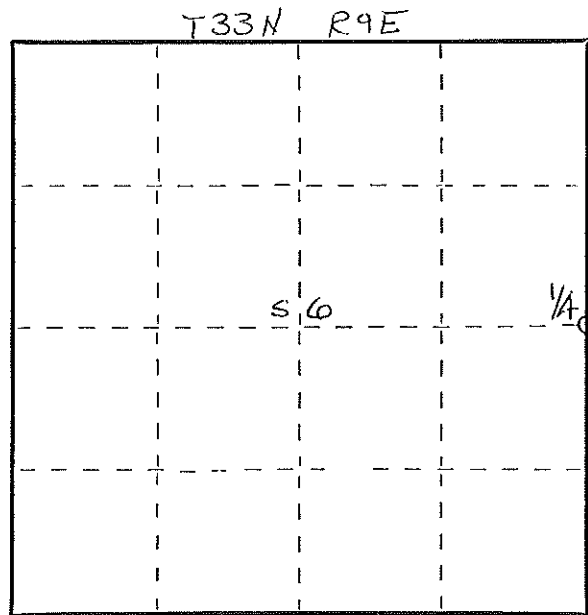
State of Wisconsin }
County of Langlade } ss.

I Daniel K. Pleoger, do hereby certify that on the 18th day of December, 1980, I found evidence of the Quarter corner of Sections 5 and 6 Township 33, North, Range 9 East, Fourth Principal Meridian, as described hereon; and that from this evidence I established a new monument and accessories as described hereon to perpetuate the original location of this corner.

Resident witnesses:



FORM 983 H. C. MILLER CO., MILWAUKEE



○ = Corner monument restored.

History of original corner establishment:

Original corner established by H.C. Fellows, deputy surveyor, in 1859 from which Birch 12" bears N70°W 10 links and Birch 14" bears S50°E 12 links.

Description of corner evidence found:

Recovered a 4" iron pipe filled with concrete and capped with a 4" diameter brass cap - stamped:
Projecting 30" above ground.

Langlade County
T33N R9E
1/4S 6 | 5
4-18-38
Cor. 50 lks. W.

Description of monument and accessories I established to perpetuate the original location of this corner.

Set a 1/2" x 3/4" bolt in C.T.H. "H" for true corner 50 links east of witness corner.
Set a 2-1/2" aluminum pipe 85.00 feet west of true corner, alloy cap stamped:

Marked NBT's:

Sugar 8" N63°W 117.02 feet
Sugar 7" S64°W 99.26 feet
both scribed 1/4 B.T.

T33N R9E
1/4 6 | 5 W.C.
E. 85 ft. to Cor.
S1537 - 1980

Dated at Rhineland, Wis., this 24th day of April, 1981.

Signature Daniel K. Pleoger Title Registered Land Surveyor Registration No. 1537
(County Surveyor, Registered Land Surveyor, or other duly authorized official)

Office of Register of Deeds, County of _____, I hereby certify that the within instrument was filed in this office for record on the _____ day of _____, 19____ at _____ o'clock _____ M.

(Register of Deeds)

By _____ Deputy