

U.S. PUBLIC LAND SURVEY MONUMENT RECORD

(Prepared and as required by S. A-E 7.08 WI Administrative Code)

The CENTER 1/4 corner of Section 12, T. 31 N., R. 12 E., Langlade County, WI
Corner was (check all that apply)

- Restored through acceptance of an obliterated evidence location.
- Restored through acceptance of a found perpetuated location.
- Determined to be lost and re-established through proportionate methods. (show bearings and distances to PLSS corners used for proportioning.)
- Restored/recovered/re-established in a location that differs from a previously established position. (Show difference in plan view below.)
- Check here if additional information is shown on the reverse side of this form.

Describe record evidence, recovered physical evidence, occupational evidence, testimonial evidence, and all other evidence considered in the recovery/restoration of the corner.

Corner not set as part of original survey.

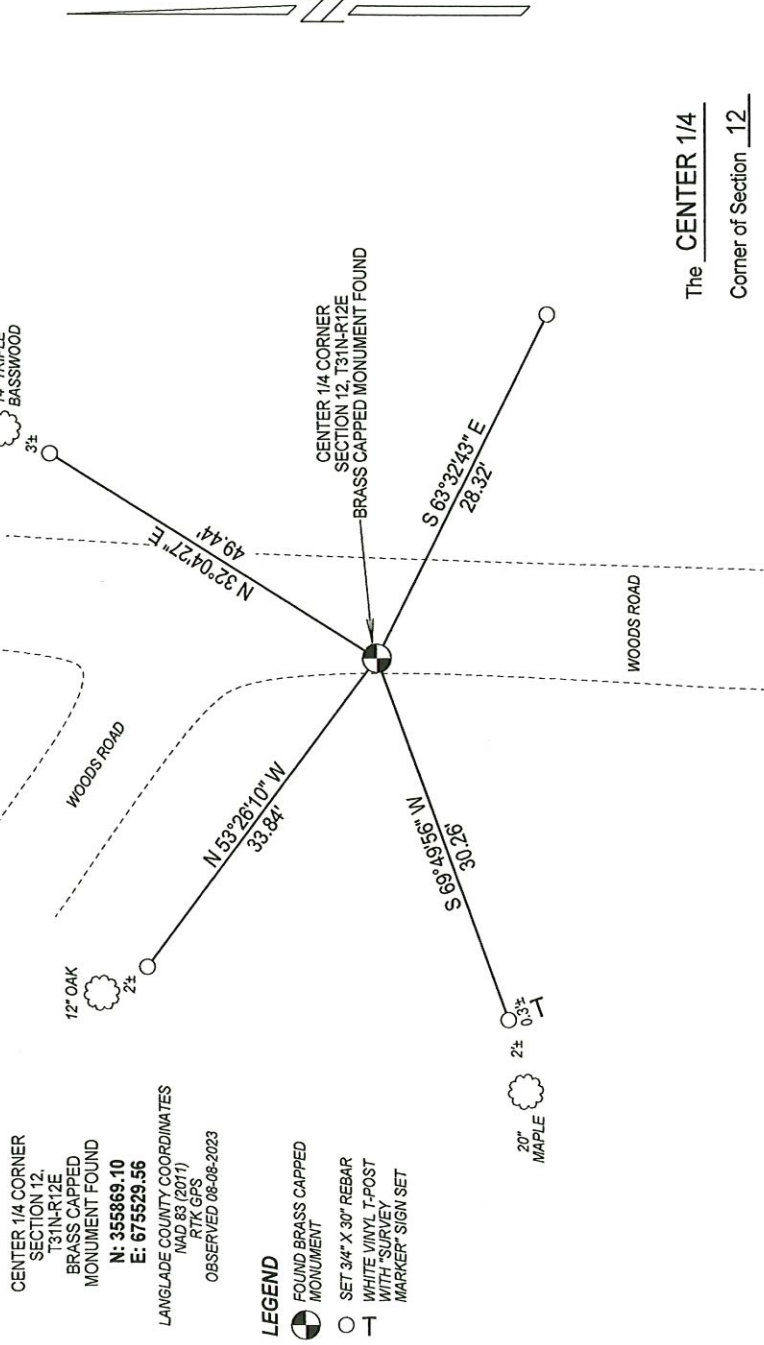
2004 - Dean Williams set corner at intersection of 1/4 lines. Williams set a brass capped monument at the corner, made ties and filed a tie sheet.

2023 - I found the existing brass capped monument set by Williams in good condition, flush with ground. No BT's set by Williams were found, area looked to be recently logged. I accept brass capped monument as the corner location.

Physical description of the monument set:

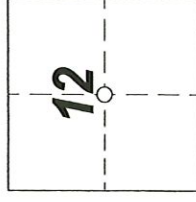
Accepted the brass capped monument as corner location and tied out as shown below.

Describe the accessories used to perpetuate the location of the corner. Include a plan view drawing and indicate accessories found/set. Describe measuring point on bearing trees. Show any topographic features that would aid in future recovery of the corner.



NOTES
- SKETCH NOT DRAWN TO SCALE
- TIE BEARINGS SHOWN ARE LANGLADE COUNTY GRID BEARINGS.
- ALL TIES MEASURED ELECTRONICALLY WITH TOTAL STATION.

The CENTER 1/4
Corner of Section 12
T. 31 N., R. 12 E.
Langlade County, WI



INDEX No. **G - 23** 4311212 2020

SURVEYORS SEAL



I, Michael J. Hoffman certify that the corner location shown on this record was determined by me or under my direction and control and that this U.S. Public Land Survey Monument Record is correct and complete to the best of my knowledge and belief.

Michael J. Hoffman 09-12-2023
Signature Date

○ = Location of corner

U.S. PUBLIC LAND SURVEY MONUMENT RECORD

(Prepared and as required by S. A-E 7.08 Wf Administrative Code)

Corner was: (check all that apply)

- Restored through acceptance of an obliterated evidence location
- Restored through acceptance of a found perpetuated location
- Determined to be lost and reestablished through proportionate methods.
(Show bearings and distances to PLSS corners used for proportioning)
- Restored/recovered/reestablished in a location that differs from a previously established position. (Show difference in plan view below.)
- Check here if additional information is shown on the reverse side of this form

43112122020

Describe record evidence, recovered physical evidence, occupational evidence, testimonial evidence and all other evidence considered in the recovery/restoration of corner.

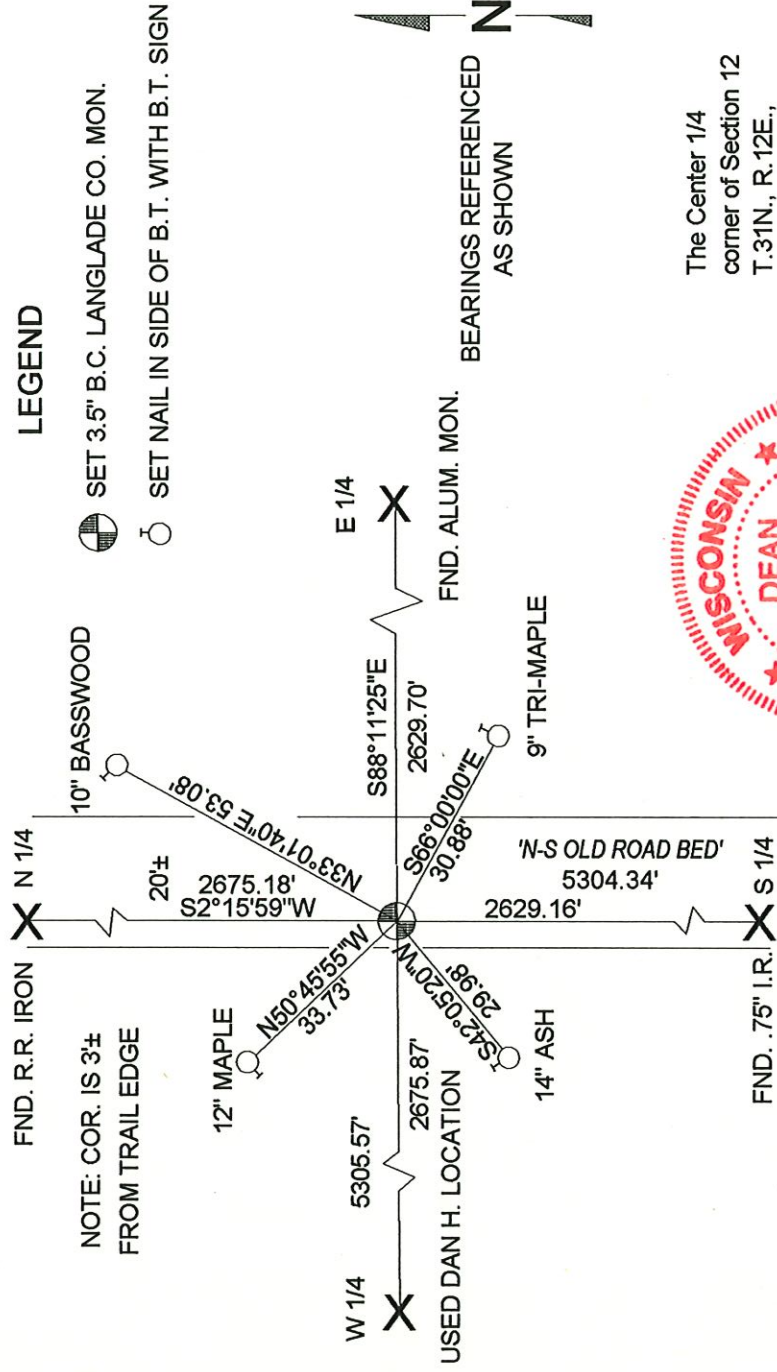
1997 - DAN HIGGINBOTHAM RLS, SUBDIVIDED SECTION INTO 1/4

2004 - Dean A. Williams found N1/4, NE COR. AND E1/4, S1/4. ALL FIT WITH DAN'S SECTION INFO SHEET GOOD.
Accepted DAN'S 1/4 LINE INTERSECTION AS C1/4 LOCATION.

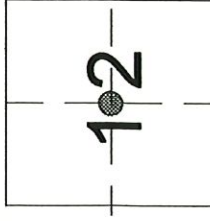
Physical description of the monument set:

2004 - Dean A. Williams and James Gardner set 3.5" B.C. LANGLADE CO. MON. 6" below dirt road surface.

Describe the accessories used to perpetuate the location of the corner. Include a plan view drawing and indicate accessories found/set. Describe measuring point on bearing trees. Show any topographic features that would aid in future recovery of the corner.



The Center 1/4 corner of Section 12 T.31N., R.12E., Langlade County, WI



● = Location of corner

INDEX NO. G-23

I, Dean A. Williams RLS 2468, certify that the corner location shown on this record was determined by me or under my direction and control and that this U.S. Public Land Survey Record is correct and complete to the best of my knowledge and belief.

Signature Dean A. Williams Date 9/20/2004