

# U.S. PUBLIC LAND SURVEY MONUMENT RECORD

(Prepared and as required by S. A-E 7.08 WI Administrative Code)

The SOUTH 1/4 corner of Section 9, T. 31 N., R. 12 E., Langlade County, WI  
Corner was (check all that apply)

- Restored through acceptance of an obliterated evidence location.
- Restored through acceptance of a found perpetuated location.
- Determined to be lost and re-established through proportionate methods. (show bearings and distances to PLSS corners used for proportioning.)
- Restored/recovered/re-established in a location that differs from a previously established position. (Show difference in plan view below.)
- Check here if additional information is shown on the reverse side of this form.

## Describe record evidence, recovered physical evidence, occupational evidence, testimonial evidence, and all other evidence considered in the recovery/restoration of the corner.

1857 - Original corner established by J. McBride - bearing trees: Hemlock, 24", S24°W, 25 links; Sugar, 12", N54°E, 50 links.

Date unknown - Fieldbook 94 Page 124, Hutchinson references corner as "stake set by myself 1906." He also references two BTs; Sugar, 18", S66°30'E, 16.25 links; Sugar, 12", S86°30'W, 19.75 links.

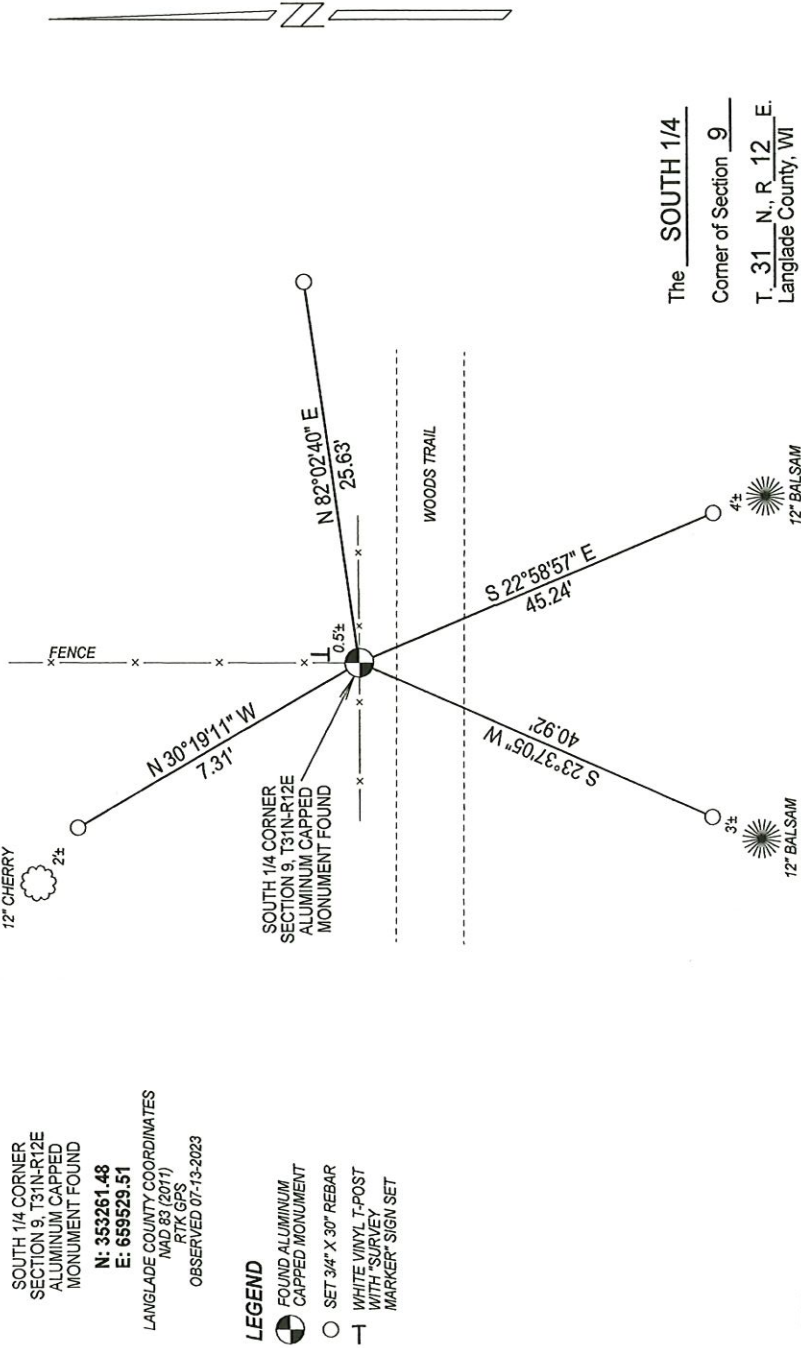
1987 - William Kelly " located iron bar at fence intersection. Fence in north-west and east directions." Kelly set an aluminum capped monument at the corner, marked witness trees and filed a tie sheet.

2023 - I found the existing aluminum capped monument at the fence intersection. I verified location from remaining BTs and set additional witness monuments.

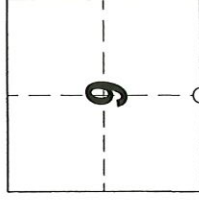
## Physical description of the monument set:

Accepted aluminum capped monument as corner location and tied out as shown below.

Describe the accessories used to perpetuate the location of the corner. Include a plan view drawing and indicate accessories found/set. Describe measuring point on bearing trees. Show any topographic features that would aid in future recovery of the corner.



The SOUTH 1/4  
Corner of Section 9  
T. 31 N., R. 12 E.  
Langlade County, WI



○ = Location of corner

SURVEYORS SEAL



I, Michael J. Hoffman certify that the corner location shown on this record was determined by me or under my direction and control and that this U.S. Public Land Survey Monument Record is correct and complete to the best of my knowledge and belief.

Michael J. Hoffman 09-12-2023  
Signature Date

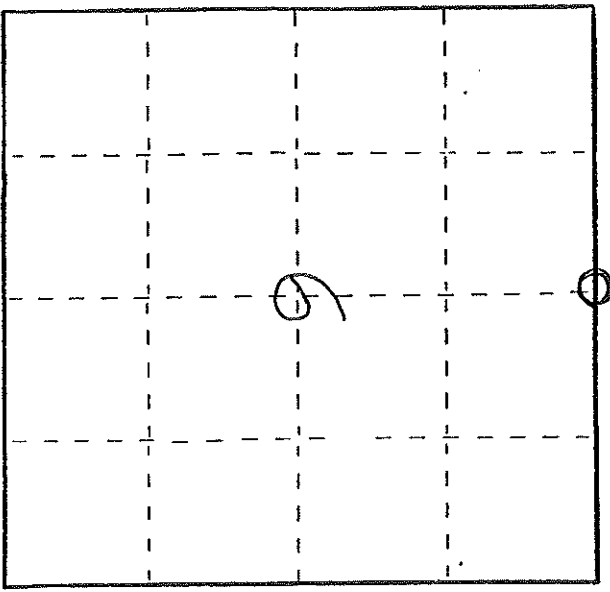
INDEX No. J - 11 4311209 0020

# U. S. PUBLIC LAND SURVEY MONUMENT RECORD

**I N S T R U C T I O N S :** This record shall show the location of the corner and shall include all of the following nine elements (a through i).

- (a) Identify the corner by reference to the U.S. public land survey system.  
 O = Corner monument restored.

ORIGINAL CORNER SET BY  
 JAMES MC BRIDE IN  
 JULY 1857  
 CORNER PERPETUATED BY  
 M. HUTCHINSON



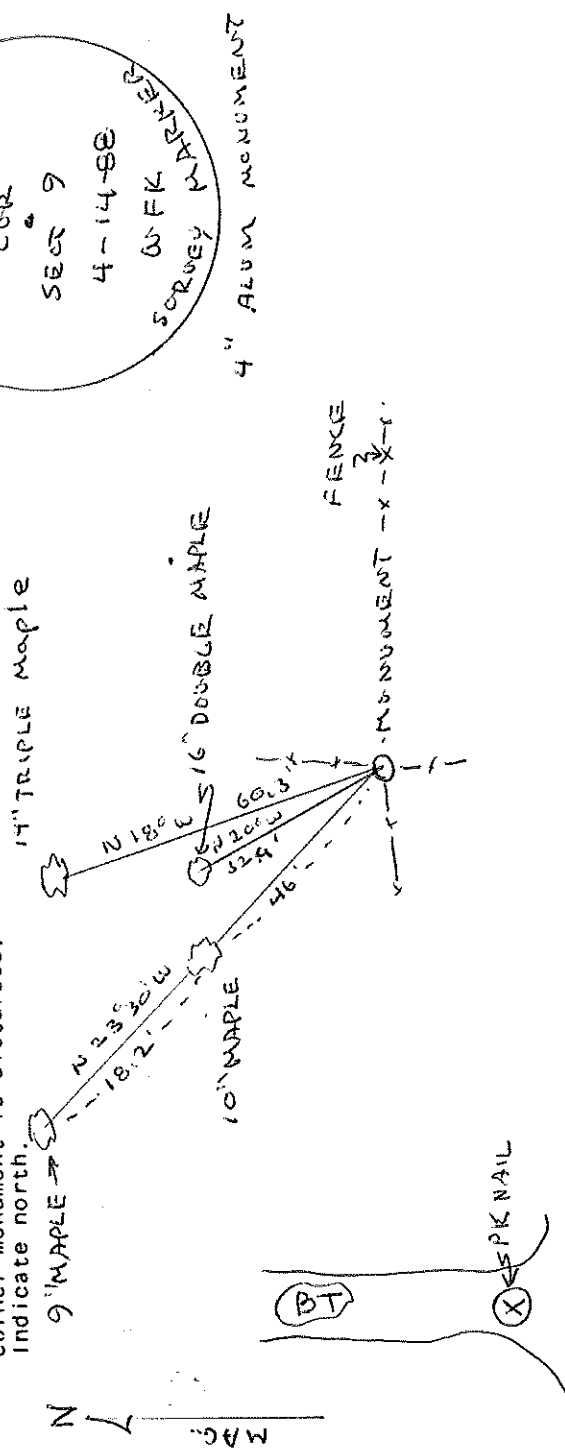
T 31 N R 12 E

- (b) Describe any record evidence, monument evidence, occupational evidence, testimonial evidence or any other material evidence you considered, and whether the monument was found or placed.

LOCATED IRON BAR AT FENCE INTERSECTION.  
 FENCE IN NORTH - WEST & EAST DIRECTIONS IDENTIFY  
 PROPERTY AS OCCUPIED  
 SET NEW ALUM MONUMENT AT CORNER LOCATION

- (c) In the plan view drawing below, provide reference ties to at least 4 witness monuments, or, if the location is within a municipality, to at least 2 witness monuments. (Witness monuments shall be made of concrete, natural stone, iron or other equally durable material.)  
 Describe witness monuments.

- (d) Show a plan view drawing depicting the relevant monuments and reference ties which is sufficient in detail to enable accurate relocation of the corner monument if the corner monument is disturbed. Indicate north.



(e) Describe any material discrepancy between the location of the corner as restored or reestablished and the location of that corner as previously restored or reestablished by distance and direction. Show the discrepancy on the plan view drawing under (d), above. Show the distances between the corner as previously restored or reestablished and (1) the corner as restored or reestablished, and (2) to at least 2 of the witness monuments shown on the drawing in (d), above.

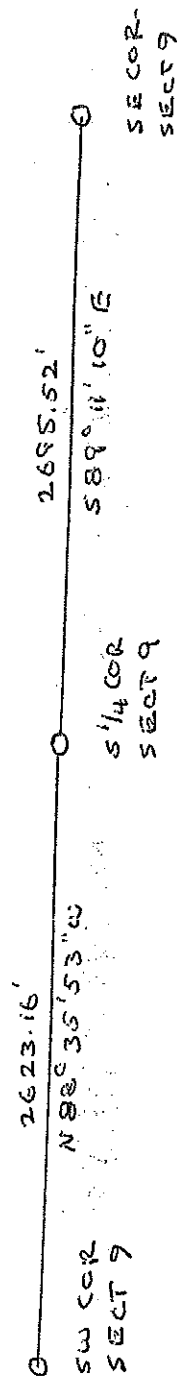
NONE

(f) Was the corner restored through acceptance of (1) an obliterated evidence location, or, (2) a found perpetuated location?

(2)

(g&h) Was the corner reestablished through lost corner proportionate methods? If so, show the method, including the directions and distances to other public land survey corners used as evidence, or used for proportioning in determining the corner location?

NO



(1) WILLIAM F. KELLY  
(type or print name) certify that the corner location shown on this record was determined by me or under my direction and control and that this U.S. Public Land Survey Monument Record is correct and complete to the best of my knowledge and belief.

William F. Kelly  
Signature

4-19-88  
Date

