

4 311033 2000 2023

# U.S. PUBLIC LAND SURVEY MONUMENT RECORD - LANGLADE COUNTY

Note: This form is intended and designed to fulfill all requirements of Wisconsin Administrative Code, Chapter A-E 7.08 U.S. Public Land Survey Monument Record (3)(a)(b)(c)(d)(e)(f)(g)(h)(i). An additional sheet may be added to if necessary to conform with said requirements.

(a) Corner Location:

Langlade County Coordinates NAD83(2011):  
Northing: 335089.51  
Easting: 597706.86

Wisconsin Corner ID: 43110332000

Type of Monument: 3/4" Iron Rod

Location: East Quarter Corner

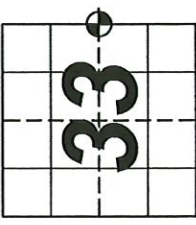
Section 33, Township 31 North, Range 10 East,

Town of Ackley, Langlade County, Wisconsin

RTK GPS direct observation

Calibrated to HMP DP2804 (Ackley C GPS)

3 position average on 10/03/2023



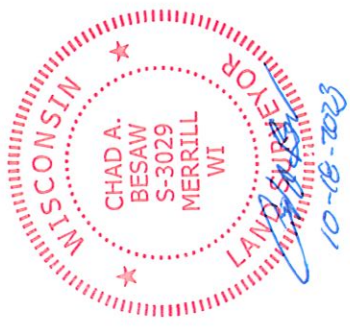
T31N-R10E

(i) I, Chad A. Besaw, Wisconsin Professional Land Surveyor #S3029, hereby certify that the corner location on this record was determined by me and that this U.S. Public Land Survey Monument Record is correct and complete to the best of my knowledge and belief.

*Chad A. Besaw*  
Chad A. Besaw

10/18/2023

Date



(b)(f)(g)(h) Description of monument found at this corner and if it was accepted, state all evidence (material, testimonial, occupational, plats, records, other monuments) used as a basis for accepting. If not accepted or if nothing was found, state evidence used as basis for establishing location. If reestablishment through lost corner proportionate methods, indicate all monuments, distances and directions used to establish. Indicate type of monument found or set and sign post.

Original Survey - 1860 Aug. - H. C. Fellows set quarter section post. Birch 12 N57W 24 lks, Birch 8 S70E 16 lks.

1880 - Deleglise at corner, new BT's. Hemlock 30 S42W 88 lks, Hemlock 12 N72W 93.5 lks, Hemlock 18 N35E 102.5 lks, Hemlock 15 S32E 94 lks. FB 140-115.

1928 - Baker at corner, removed oblong stone 4"x4"x8" (identified by John O'Brien) and set steel rod 1"x2'. No trace of old BT's. New BT's Pine stump 12 N23W 59.2', Pine Stump 7 S62W 54.1'. FB 149-12

1990 Oct. - William Kelly located railroad spike 3" below surface of road, and set 3" aluminum witness monument.

1997 June - Dave Tlusty dug with backhoe and found nothing.

2005 Nov. - Phillip Hargrove shows he found a 1" Iron Rod at corner location in a Section breakdown for a survey in Sections 33 and 34. Langlade Co Map #20299.

2016 May - Timothy Rusch found an iron pipe at corner location in CSM V18 P34.

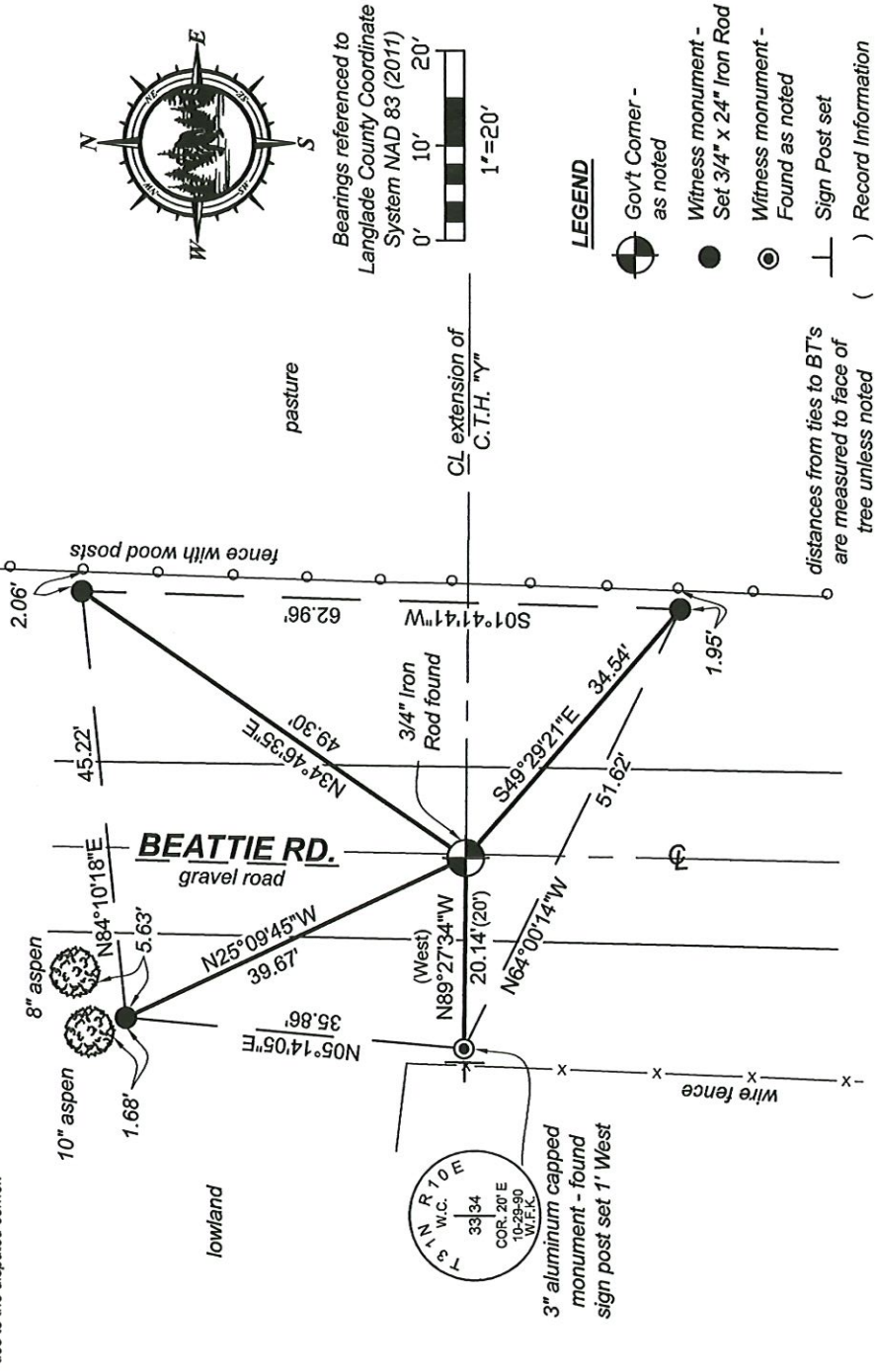
2016 Aug. - Joshua Prentice found a 1" iron pipe at corner location for a survey in the West half of Section 33. Langlade Co Map #20072.

2020 April - Timothy Rusch found an iron pipe at corner location in CSM V19 P81.

1990 Oct. - William Kelly located railroad spike 3" below surface of road at CL intersection of Beattie Rd and the Westerly extension of CTH "Y" CL. Set 3" stamped aluminum witness monument 20' West. Witnessed with: PK nail in power pole 3110-33E1 N51°W 32.25', 1" IP N50°E 22.14'.

2023 Oct. - Chad A. Besaw found and accepted a 3/4" Iron Rod down 6" in gravel road at corner location at the CL intersection of Beattie Rd and the Westerly extension of CTH "Y" CL. Found Kelly's witness monument with no other witnesses found. Rewitnessed as shown below.

(c)(d)(e) Plan view of corner with ties to at least 4 witness monuments. If in disagreement with previously established corner, show the distances between the two corners and also indicate the ties to the disputed corner.



X 13 31-10

4310338000

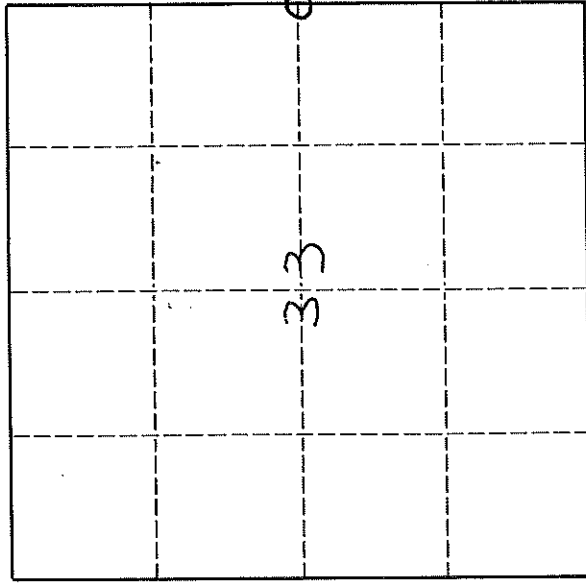
# U. S. PUBLIC LAND SURVEY MONUMENT RECORD

## INSTRUCTIONS:

This record shall show the location of the corner and shall include all of the following nine elements (a through i).

- (a) Identify the corner by reference to the U.S. public land survey system.
- O = Corner monument restored.

ORIGINAL CORNER ESTABLISHED BY H.C. FELLOWS IN AUG. 1860



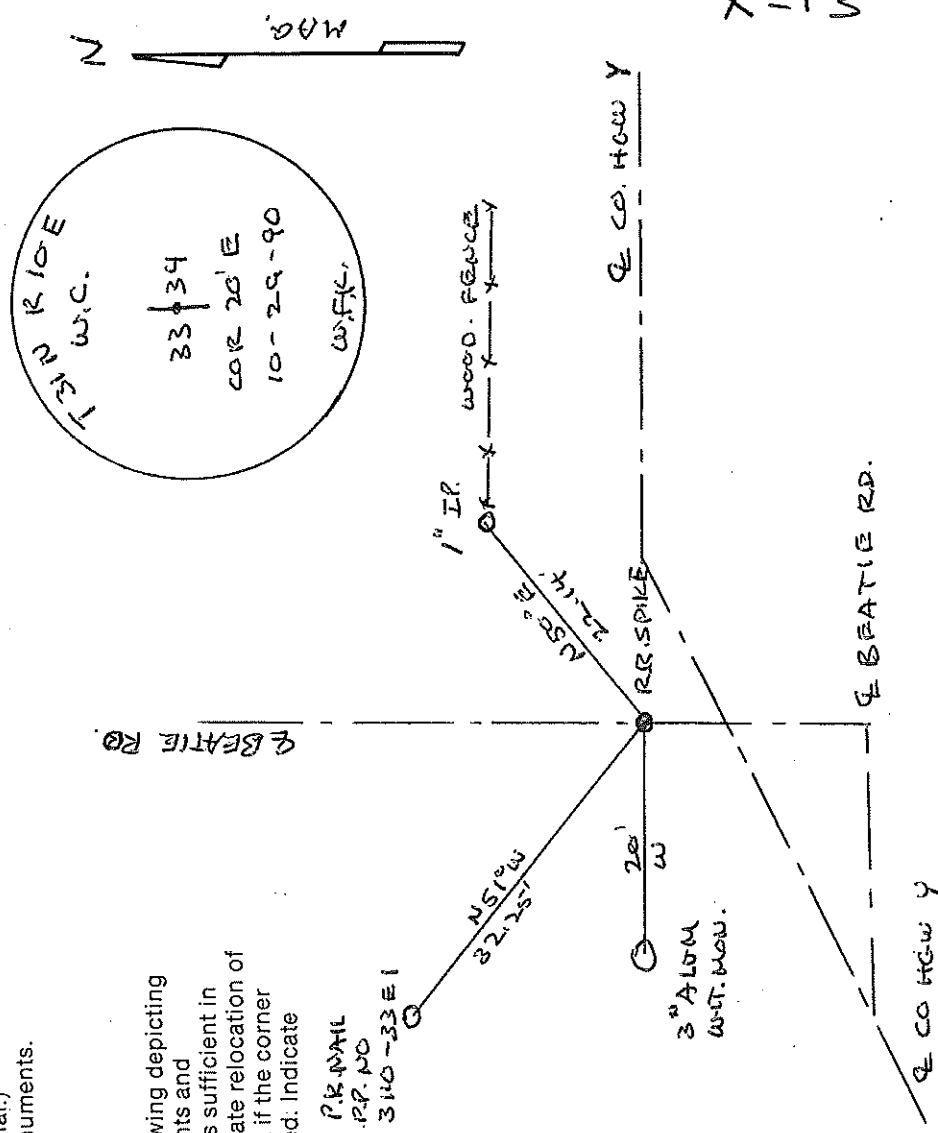
T 31 N R 10 E

- (b) Describe any record evidence, monument evidence, occupational evidence, testimonial evidence or any other material evidence you considered, and whether the monument was found or placed.

LOCATED R.R. SPIKE 3" BELOW SURFACE OF ROAD SET 3" ALUM. WIT. MONUMENT

6/97 D. TERRY DUG HOLE WITH BACKHOE - FOUND NOTHING.

- (c) In the plan view drawing below, provide reference ties to at least 4 witness monuments, or, if the location is within a municipality, to at least 2 witness monuments. (Witness monuments shall be made of concrete, natural stone, iron or other equally durable material.) Describe witness monuments.



43110332000

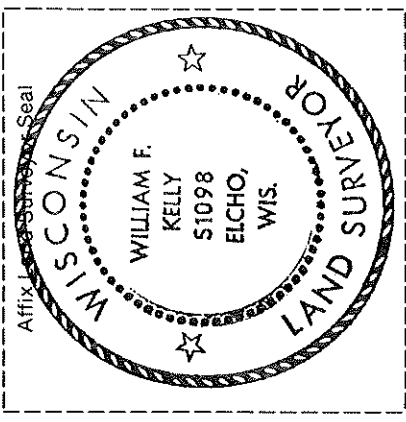
Describe any material discrepancy between the location of the corner as restored or reestablished and the location of that corner as previously restored or reestablished by distance and direction. Show the discrepancy on the plan view drawing under (d), above. Show the distances between the corner as previously restored or reestablished and (1) the corner as restored or reestablished, and (2) to at least 2 of the witness monuments shown on the drawing in (d), above.

NO USE

(f) Was the corner restored through acceptance of (1) an obliterated evidence location, or, (2) a found perpetuated location?  
(2)

(g & h) Was the corner reestablished through lost corner proportionate methods? If so, show the method, including the directions and distances to other public land survey corners used as evidence or used for proportioning in determining the corner location.

NO



(i) I, WILLIAM F. KELLY  
(type or print name)  
certify that the corner location shown on this record was determined by me or under my direction and control and that this U.S. Public Land Survey Monument Record is correct and complete to the best of my knowledge and belief.

Signature William F. Kelly Date 11-1-90