

4311028 2020 2023

U.S. PUBLIC LAND SURVEY MONUMENT RECORD - LANGLADE COUNTY

Note: This form is intended and designed to fulfill all requirements of Wisconsin Administrative Code, Chapter A-E 7.08 U.S. Public Land Survey Monument Record (3)(e)(b)(c)(e)(f)(g)(h)(i). An additional sheet may be added to it if necessary to conform with said requirements.

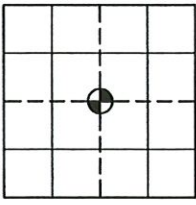
(a) Corner Location:

Langlade County Coordinates NAD83(2011):
Northing: 340394.59
Easting: 595118.10

Wisconsin Corner ID: 43110282020
Type of Monument: 1" Iron Pipe
Location: Center of Section

Section 28, Township 31 North, Range 10 East,
Town of Ackley, Langlade County, Wisconsin

RTK GPS direct observation
Calibrated to HMP DP2804 (Ackley C GPS)
3 position average on 9/17/2023



(i) I, Chad A. Besaw, Wisconsin Professional Land Surveyor #S3029, hereby certify that the corner location on this record was determined by me and that this U.S. Public Land Survey Monument Record is correct and complete to the best of my knowledge and belief.

Chad A. Besaw
Chad A. Besaw

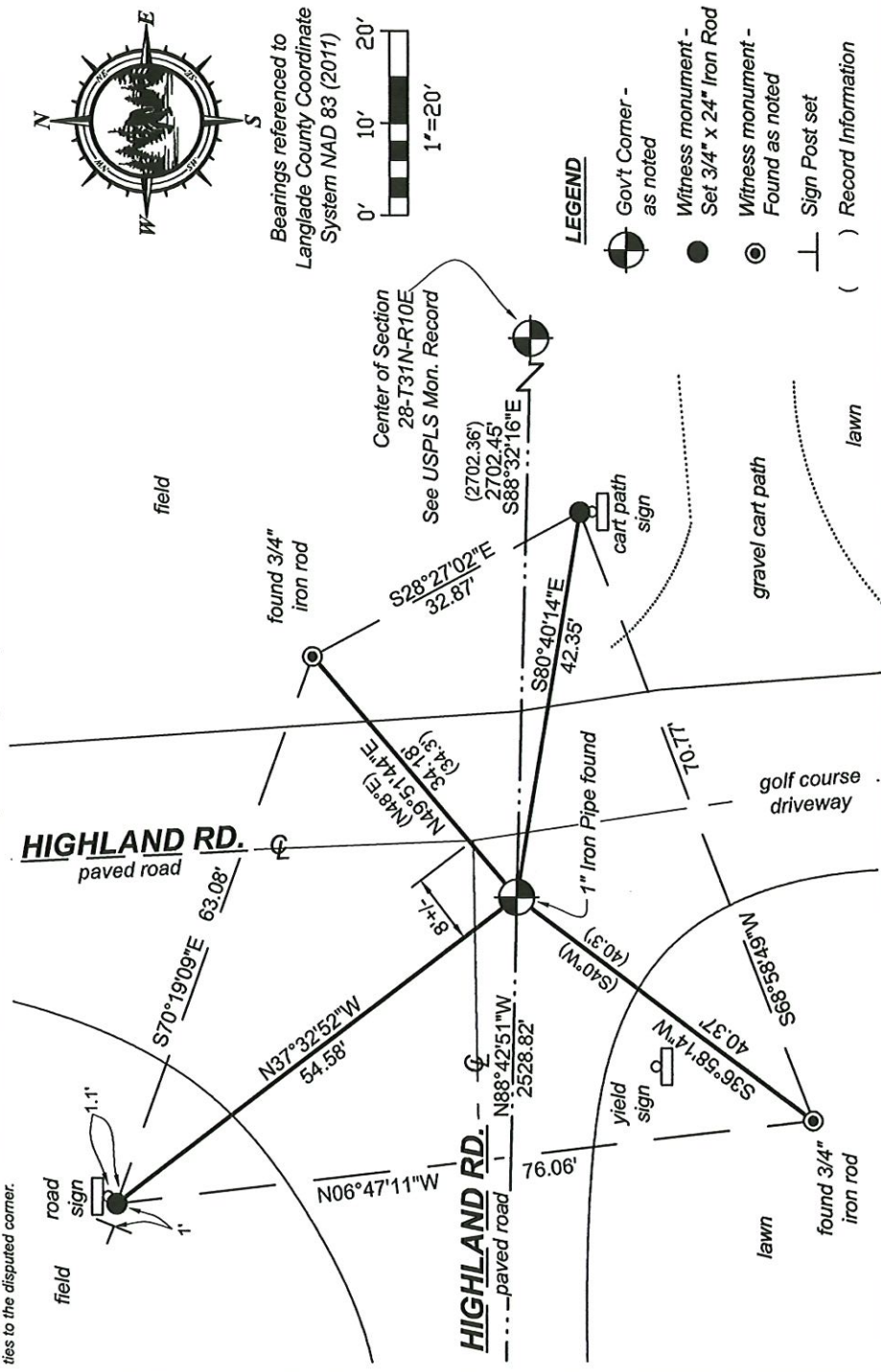
10/18/2023
Date



(b)(f)(g)(h) Description of monument found at this corner and if it was accepted, state all evidence (material, testimonial, occupational, plats, records, other monuments) used as a basis for accepting. If not accepted or if nothing was found, state evidence used as basis for establishing location. If reestablishment through lost corner proportionate methods, indicate all monuments, distances and directions used to establish. Indicate type of monument found or set and sign post.

- 1907 March - Brooks at corner. Hem 9 N83E 38, Hem 18 N40W 69.75 lks. FB 94-25
- 1929 April - Hutchinson set gas pipe at corner location. Witnessed with angle iron 2x2 N22E 42 lks, and S32.5W 66 lks. Notes Center is on E-W 1/4 line but did not run N-S 1/4 line. FB 122-123.
- 1993 Jan. - Edwin Abendroth shows corner symbol but does not specify type of monument in CSM V5 P104.
- 1995 Oct. - Thomas Amott found a PK Nail at corner location in CSM V6 P162
- 1996 June - Thomas Amott found a PK Nail and a bent Iron Pipe under pavement at corner location, then set a 3/4" Rebar with red cap. Langlade Co Map #10451
- 2007 Jan. - Timothy Rusch found a Railroad Spike at corner location (2702.36 to E 1/4 corner) in CSM V14 P42.
- 2010 March - Timothy Rusch found an Iron Rod at corner location in CSM V16 P11.
- 2010 Sep. - Timothy Rush found Iron Pipe at corner location in the plat of The Endlave at River Oaks Document Number 348939.
- 2015 July - Timothy Rusch found an Iron Rod at corner location in CSM V17 P152.
- 2018 Nov. - Timothy Rusch found an Iron Rod at corner location CSM V19 P2.
- 2020 June - Timothy Rusch found an Iron Rod at corner location in CSM V19 P93.
- 1987 Dec. - Edwin Abendroth found and accepted a PK Nail at corner location, believed to be the same position from William Kelly. Witnessed with 3/4" iron rods as follows: N31°W 47.13, N48°E 34.31', S75°E 31.63', S40°W 40.3'.
- 2023 Sep. - Chad A. Besaw found and accepted a 1" Iron Pipe down 2" in pavement as called for in previous surveys. Fits well with distance to E1/4. Pipe was found bent over and broken at bend, Iron Rod was not found, could have been the pipe bent over under pavement. Found NE and SW ties from previous tie sheet, rewitnessed as shown below.

(c)(d)(e) Plan view of corner with ties to at least 4 witness monuments. If in disagreement with previously established corner, show the distances between the two corners and also indicate the ties to the disputed corner.



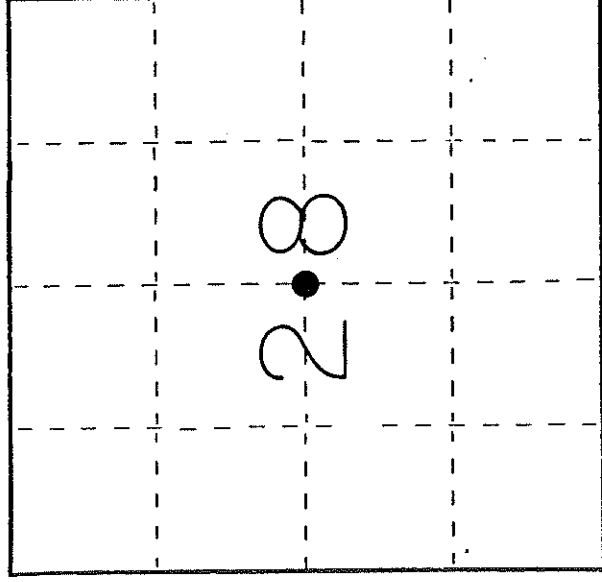
T11 31-10

43110282020

U. S. PUBLIC LAND SURVEY MONUMENT RECORD

I N S T R U C T I O N S : This record shall show the location of the corner and shall include all of the following nine elements (a through i).

- (a) Identify the corner by reference to the U.S. public land survey system.
- = Corner monument restored.



Center $\frac{1}{4}$ corner of Section 28, T31N, R10E

T 31 N R 10 E

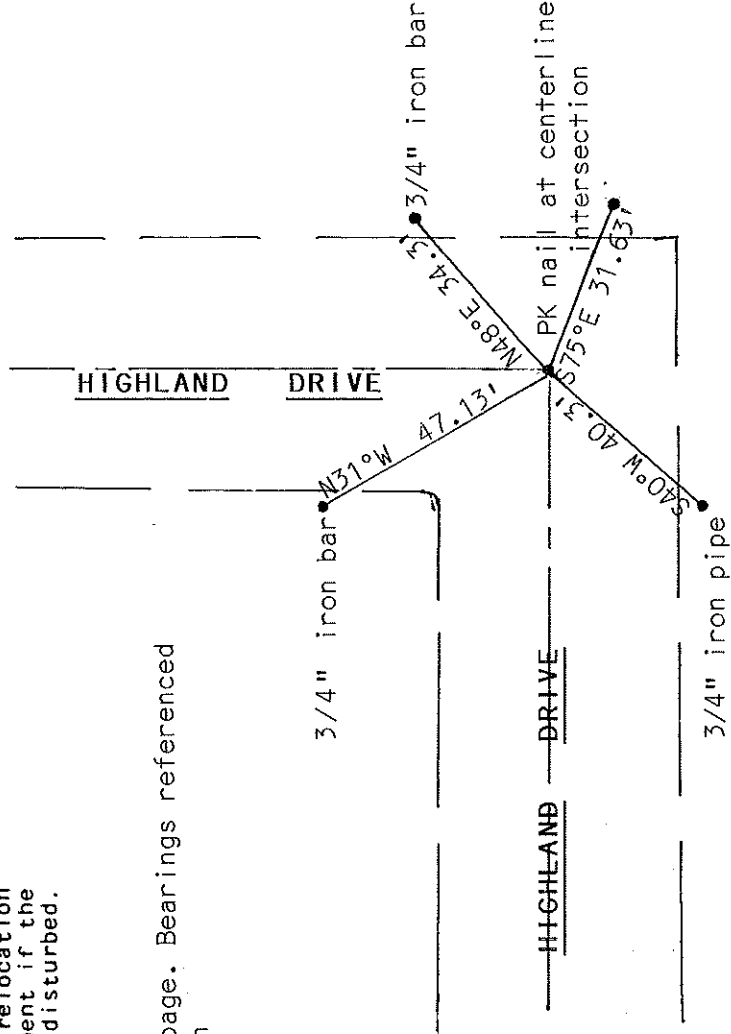
- (b) Describe any record evidence, monument evidence, occupational evidence, testimonial evidence, or any other material evidence you considered, and whether the monument was found or placed.

Found existing PK nail at centerline intersection. Location of PK nail described as being the center of Section by Wm. F. Kelly County Surveyor.

- (c) In the plan view drawing below, provide reference ties to at least 4 witness monuments, or, if the location is within a municipality, to at least 2 witness monuments. (Witness monuments shall be made of concrete, natural stone, iron or other equally durable material.) Describe witness monuments.

- (d) Show a plan view drawing depicting the relevant monuments and reference ties which is sufficient in detail to enable accurate relocation of the corner monument if the corner monument is disturbed. Indicate north.

North to top of page. Bearings referenced to magnetic North



4311001134

(e) Describe any material discrepancy between the location of the corner as restored or reestablished and the location of that corner as previously restored or reestablished by distance and direction. Show the discrepancy on the plan view drawing under (d), above. Show the distances between the corner as previously restored or reestablished and (1) the corner as restored or reestablished, and (2) to at least 2 of the witness monuments shown on the drawing in (d), above.

none

(f) Was the corner restored through acceptance of (1) an obliterated evidence location, or, (2) a found perpetuated location?

(2)

(g&h) Was the corner reestablished through lost corner proportionate methods? If so, show the method, including the directions and distances to other public land survey corners used as evidence or used for proportioning in determining the corner location?

no

(i) I, Edwin R. Abendroth (type or print name) certify that the corner location shown on this record was determined by me or under my direction and control and that this U.S. Public Land Survey Monument Record is correct and complete to the best of my knowledge and belief.

Edwin R. Abendroth

Signature

December 7, 1987

Date

