

4311028 2000 2023

U.S. PUBLIC LAND SURVEY MONUMENT RECORD - LANGLADE COUNTY

Note: This form is intended and designed to fulfill all requirements of Wisconsin Administrative Code, Chapter A-E 7.08 U.S. Public Land Survey Monument Record (3)(a)(b)(c)(d)(e)(f)(g)(h)(i). An additional sheet may be added to if necessary to conform with said requirements.

(e) Corner Location:

Wisconsin Corner ID: **43110282000**
 Type of Monument: **1.25" Iron Pipe**
 Location: **East Quarter Corner**
Section 28, Township 31 North, Range 10 East,
 Town of Ackley, Langlade County, Wisconsin

Langlade County Coordinates NAD83(2011):
 Northing: **340325.63**
 Easting: **597819.66**

RTK GPS direct observation
 Calibrated to HMP DP2804 (Ackley C GPS)
 3 position average on 10/06/2023



T31N-R10E

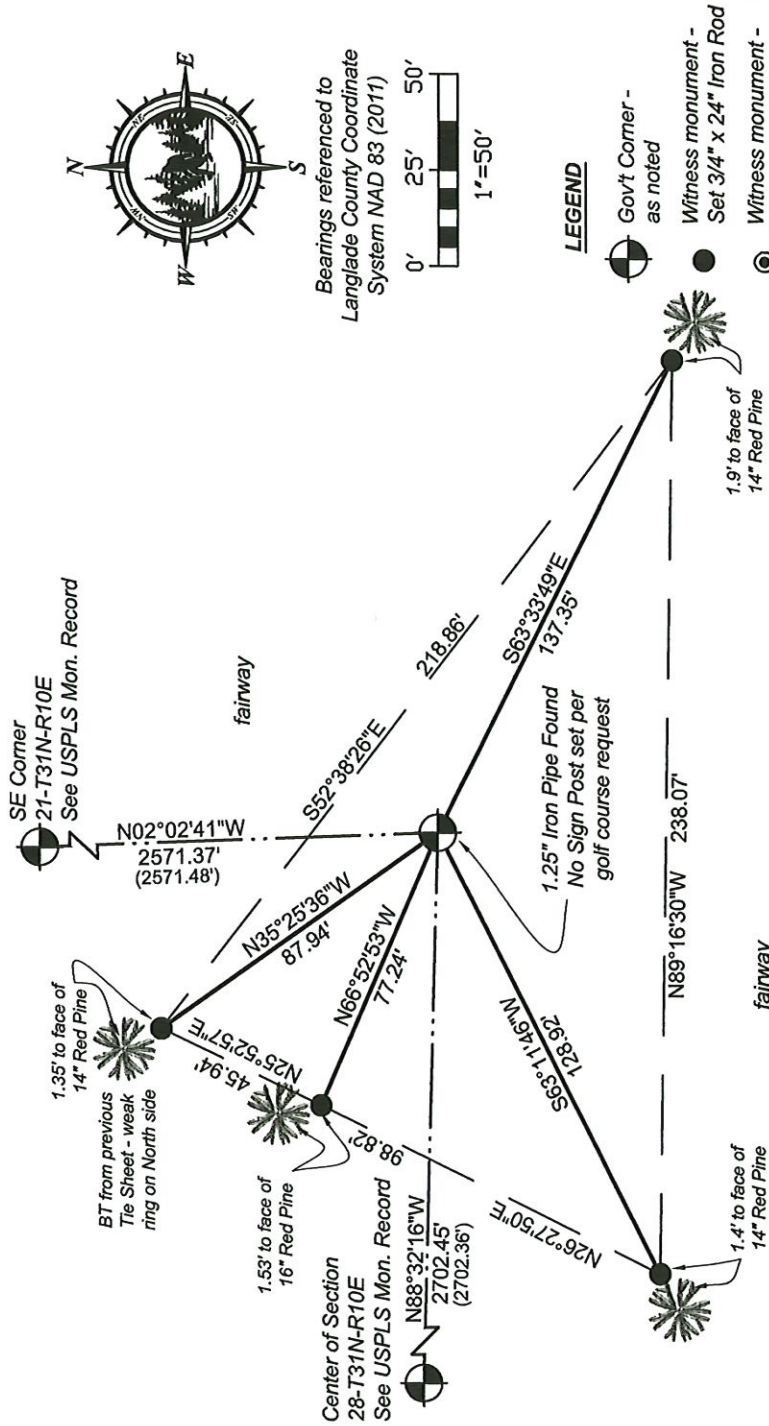
(b)(f)(g)(h) Description of monument found at this corner and if it was accepted, state all evidence (material, testimonial, occupational, plats, records, other monuments) used as a basis for accepting. If not accepted or if nothing was found, state evidence used as basis for establishing location. If reestablishment through lost corner, proportionate methods, indicate all monuments, distances and directions used to establish. Indicate type of monument found or set and sign post.

- Original Survey - 1860 Aug. - H. C. Fellows set quarter section post. Birch 20 N20.5W 20 lks, Birch 10 N60E 13 lks.
- 1877 - Deleglise at corner. FB 143-22
- 1880 - Deleglise found original BT Birch 11 N63E 13 lks, established new BT's all Birch 16 N22.5W 31 lks, 12 N26E 45.75lks, 10 N31E 30.25 lks, 22 N18 W 53.25lks. FB 140-117
- 1882 - Dorr at corner. FB 149-59
- 1907 - Brooks at corner. Pine 11 S34E 56.5 lks, Pine 15 N53W 54 lks. Stone 6x5x18 + on top. FB 94-36. States he set gas pipe over old gas pipe set by former surveyor. FB 94-25.
- 1992 Nov. - WISDOT Project Number 9015-07-21, S.T.H. 64, shows 1" Iron Pipe at corner location on sheet 4.4. Langlade Co Map #10369
- 1990 April - William Kelly found a 1" iron pipe at corner location for a survey of the E 1/2 of the SE 1/4 of Section 27. Langlade Co Map #30442.
- 1994 March - Dave Tuusty found an Iron Pipe at corner location in survey of NW 1/4 of Section 27. Langlade Co Map #30443
- 1996 June - Thomas Amott found an Iron Pipe at corner location. Langlade Co Map #10451.
- 2007 Jan. - Timothy Rusch found an Iron Pipe at corner location (2571.48 to NE, 2702.36 to Cen) in CSM V14 P42.
- 2010 March - Timothy Rusch found an Iron Pipe at corner location (2702.36 to Cen) in CSM V16 P11.
- 2010 Sep. - Timothy Rusch found Iron Pipe at corner location in the plat of The Enclave at River Oaks Document Number 348939.
- 2019 June - Timothy Rusch found an Iron Pipe at the corner location for a survey of part of the SE 1/4 of the NW 1/4 of Section 27. Langlade Co Map #20501.
- 2020 June - Timothy Rusch found an Iron Pipe at corner location (2571.48 to NE corner) in CSM V19 P93.
- 1987 Dec. - Edwin Abendroth found and accepted a 1" Iron Pipe as corner position. Witnessed with three 30d nails in red pines. N35°W 89.95', S81°W 100.00', S65°E 139.43'.
- 2023 Oct. - Chad A. Besaw found and accepted a 1.25" Iron Pipe as called for in previous tie sheet and surveys. Corner is in fairway, no sign post set per request of golf course. NW and SE bearing trees remain with weak magnetic rings in place of nails. Golf course owner stated wind storms have blown over man trees in the last couple years, rewitnessed as shown below.



[Signature]
 Chad A. Besaw
 10/18/2023
 Date

(c)(d)(e) Plan view of corner with ties to at least 4 witness monuments. If in disagreement with previously established corner, show the distances between the two corners and also indicate the ties to the disputed corner.



T13 31-10

distances from ties to BT's are measured to face of tree unless noted

LEGEND

- Gov't Corner - as noted
- Witness monument - Set 3/4" x 24" Iron Rod
- Witness monument - Found as noted
- Sign Post set
- Record Information

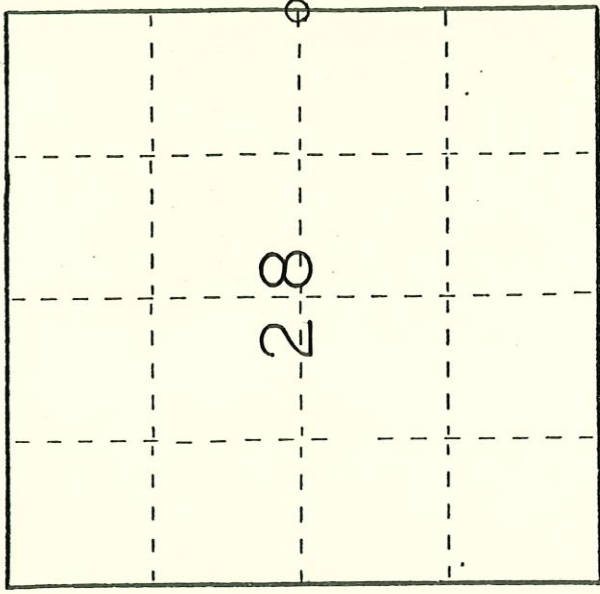
431028200

U. S. PUBLIC LAND SURVEY MONUMENT RECORD

I N S T R U C T I O N S : This record shall show the location of the corner and shall include all of the following nine elements (a through i).

(a) Identify the corner by reference to the U. S. public land survey system.

O = Corner monument restored.



T 31 N R 10 E

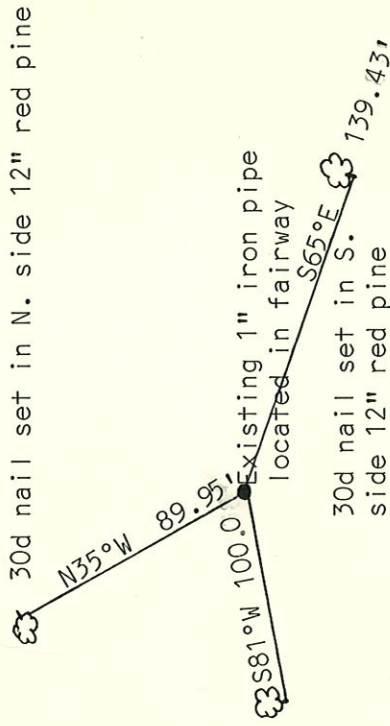
East $\frac{1}{4}$ corner Section 28, T31N, R10E

(b) Describe any record evidence, monument evidence, occupational evidence, testimonial evidence, or any other material evidence you considered, and whether the monument was found or placed.

Located 1" iron pipe in place as described in notes and maps supplied by Wm F. Kelly Langlade County Surveyor.

(c) In the plan view drawing below, provide reference ties to at least 4 witness monuments, or, if the location is within a municipality, to at least 2 witness monuments. (Witness monuments shall be made of concrete, natural stone, iron or other equally durable material.) Describe witness monuments.

(d) Show a plan view drawing depicting the relevant monuments and reference ties which is sufficient in detail to enable accurate relocation of the corner monument if the corner monument is disturbed. Indicate north.



30d nail set in south side of 13" red pine

4311080000

(e) Describe any material discrepancy between the location of the corner as restored or reestablished and the location of that corner as previously restored or reestablished by distance and direction. Show the discrepancy on the plan view drawing under (d), above. Show the distances between the corner as previously restored or reestablished and (1) the corner as restored or reestablished, and (2) to at least 2 of the witness monuments shown on the drawing in (d), above.

none

(f) Was the corner restored through acceptance of (1) an obliterated evidence location, or, (2) a found perpetuated location?

(2)

(g&h) Was the corner reestablished through lost corner proportionate methods? If so, show the method, including the directions and distances to other public land survey corners used as evidence or used for proportioning in determining the corner location?

No

(i) I, Edwin R. Abendroth certify that the corner location shown (type or print name) on this record was determined by me or under my direction and control and that this U.S. Public Land Survey Monument Record is correct and complete to the best of my knowledge and belief.

Edwin R. Abendroth
Signature

December 7, 1987
Date

Date

