

4311026 0020 2023

U.S. PUBLIC LAND SURVEY MONUMENT RECORD - LANGLADE COUNTY

Note: This form is intended and designed to fulfill all requirements of Wisconsin Administrative Code, Chapter A-E 7.08 U.S. Public Land Survey Monument Record (3)(a)(b)(c)(d)(e)(f)(g)(h)(i). An additional sheet may be added to if necessary to conform with said requirements.

(a) Corner Location:

Langlade County Coordinates NAD83(2011):
Northing: 337623.30
Easting: 605726.03

Wisconsin Corner ID: 43110260020

Type of Monument: Bernsten Survey Nail

Location: South Quarter Corner

Section 26, Township 31 North, Range 10 East,

Town of Ackley, Langlade County, Wisconsin

RTK GPS direct observation
Calibrated to HMP DP2804 (Ackley C GPS)
3 position average on 10/06/2023



T31N-R10E

(i) I, Chad A. Besaw, Wisconsin Professional Land Surveyor #S3029, hereby certify that the corner location on this record was determined by me and that this U.S. Public Land Survey Monument Record is correct and complete to the best of my knowledge and belief.

Chad A. Besaw
Chad A. Besaw
10/18/2023
Date



(b)(f)(g)(h) Description of monument found at this corner and if it was accepted, state all evidence (material, testimonial, occupational, plats, records, other monuments) used as a basis for accepting. If not accepted or if nothing was found, state evidence used as basis for establishing location. If reestablishment through lost corner proportionate methods, indicate all monuments, distances and directions used to establish. Indicate type of monument found or set and sign post.

Original Survey – 1860 Aug. - H. C. Fellows set quarter section post.
Sugar 12 S20W 8 lks, Hemlock 14 N52E 7 lks.

1879 – Deleglise at corner. Established new BT's Sugar 9 N57W 54.5 lks, Birch 20 N53E 32 1/3 lks,
Sugar 16 S40.5E 61 2/3 lks. FB 140-120.

1880 Dec. – Deleglise at corner, established BT's Pine 38 N56W 97 lks, Sugar 12 N15E 66 lks,
Sugar 12 N59E 75 lks. FB 140-114.

1960 April – WISDOT project S0715(1) C.T.H. "H" shows corner symbol in CL/alignment of
roadway on sheet 4.0. Langlade Co Map #40474.

1992 Nov. – WISDOT Project Number 9015-07-21, S.T.H. 64, shows a PK nail over 1" bar at corner
location on sheet 4.7. Langlade Co Map #10369.

1998 Aug. – Daniel Higginbotham found 1" rod at corner location in CSM V8 P62.

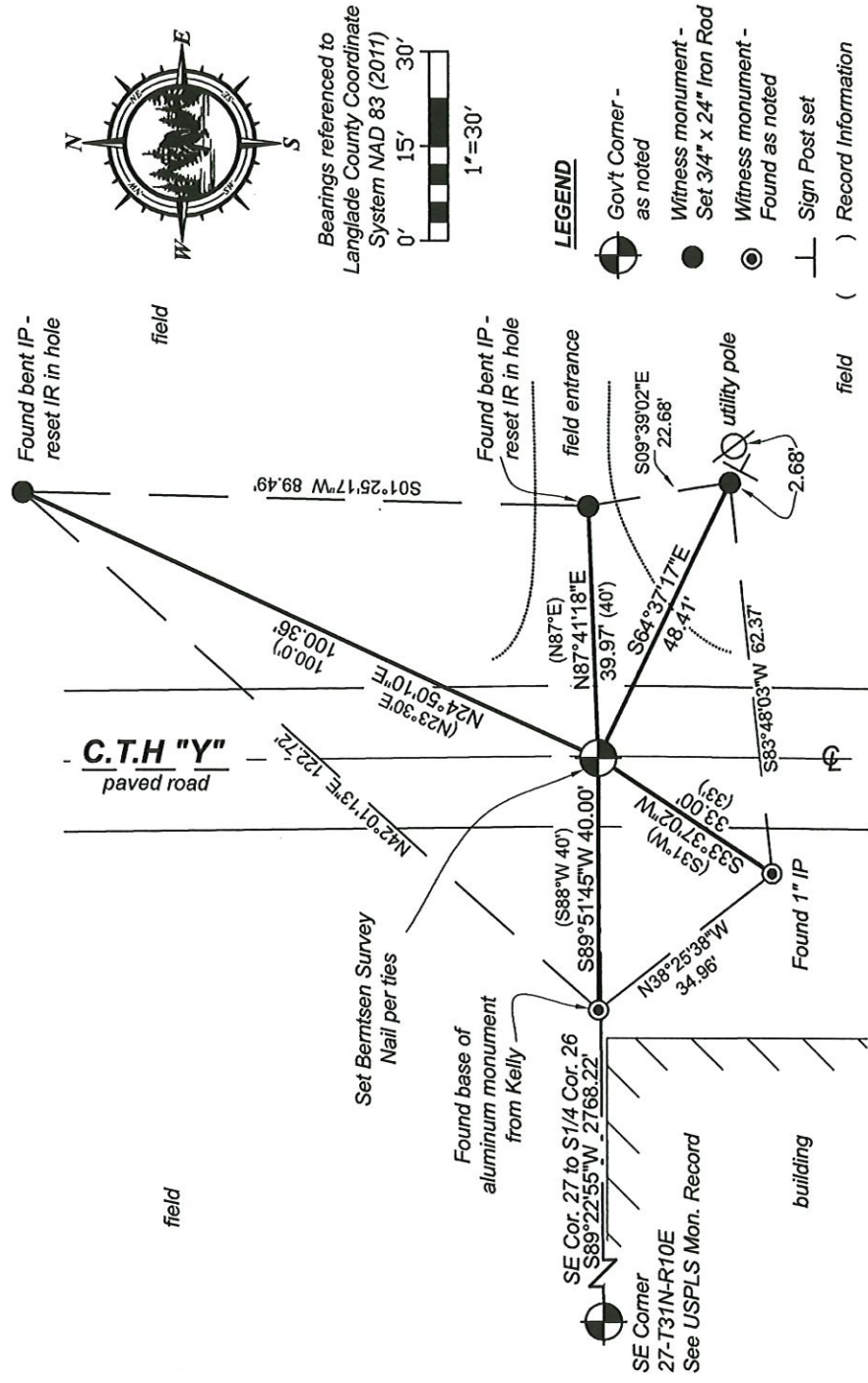
2008 July – Timothy Rusch calculated position from ties in CSM V15 P38.
Nothing CSM V3 P241

2009 July – Charley Brinkmeier calculated position from ties in CSM V15 P181.

1988 Nov. - William Kelly located 1" iron bar flush with rod surface and in line with property fence.
witnessed with: 3" stamped aluminum witness monument S88°W 40', 1" IP N23°30'E 100.0', 1" IP 1'
from power pole 3110-26R23 N87°E 40', 1" IP S31°W 33'.

2023 Oct. - Chad A. Besaw set Bernsten Survey Nail per found ties from previous tie sheet at corner
location. Found the base of Kelly's aluminum monument with top sheared off, and the SW tie in good
condition. NE and E ties were bent at 90° angles. I replaced them with new 3/4"x24" rebar and set
one additional tie SE. Set sign post 1' behind SE tie, and rewitnessed as shown below.

(c)(d)(e) Plan view of corner with ties to at least 4 witness monuments. If in disagreement with previously established corner, show the distances between the two corners and also indicate the ties to the disputed corner.



V-19 31-10

43110260000

U. S. PUBLIC LAND SURVEY MONUMENT RECORD

INSTRUCTIONS:

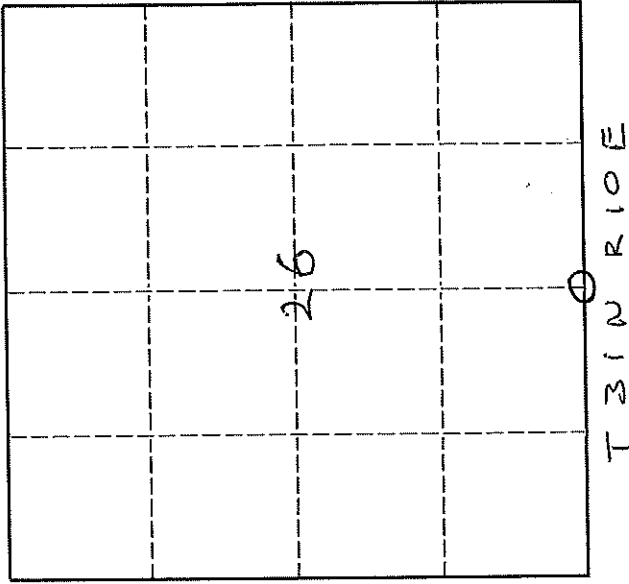
This record shall show the location of the corner and shall include all of the following nine elements (a through i).

- (a) Identify the corner by reference to the U.S. public land survey system.

O = Corner monument restored.

ORIGINAL CORNER ESTABLISHED BY H.C. FELLOWS IN AUGUST 1860

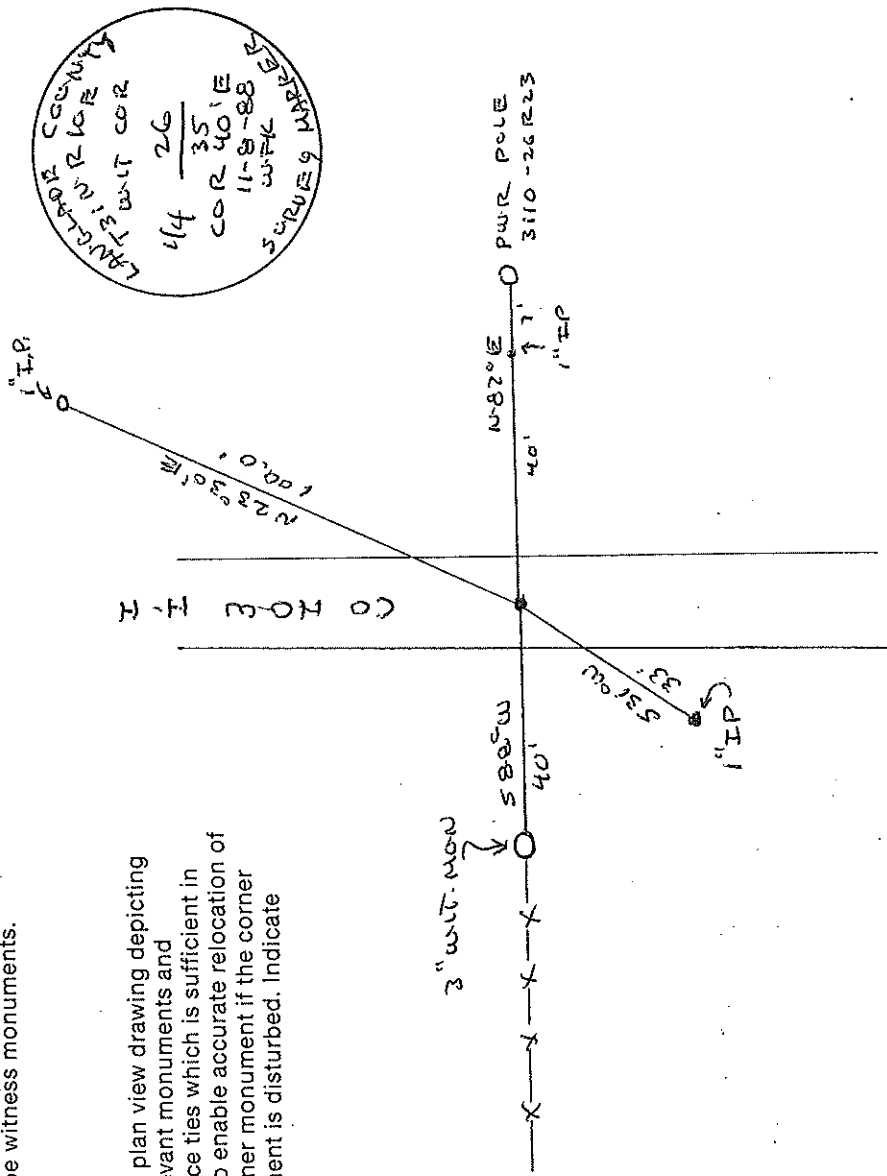
CORNER PERPETUATED BY M. HUTCHINSON IN THE 1920'S



- (b) Describe any record evidence, monument evidence, occupational evidence, testimonial evidence or any other material evidence you considered, and whether the monument was found or placed.

LOCATED IN IRON BAR FLUSH WITH ROAD SURFACE AND IN LINE WITH PROPERTY FENCE

- (c) In the plan view drawing below, provide reference ties to at least 4 witness monuments, or, if the location is within a municipality, to at least 2 witness monuments. (Witness monuments shall be made of concrete, natural stone, iron or other equally durable material.) Describe witness monuments.



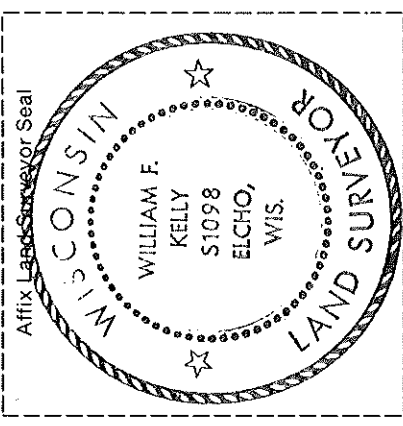
43110760000

Describe any material discrepancy between the location of the corner as restored or reestablished and the location of that corner as previously restored or reestablished by distance and direction. Show the discrepancy on the plan view drawing under (d), above. Show the distances between the corner as previously restored or reestablished and (1) the corner as restored or reestablished, and (2) to at least 2 of the witness monuments shown on the drawing in (d), above.

NONE

(f) Was the corner restored through acceptance of (1) an obliterated evidence location, or, (2) a found perpetuated location?
(2)

(g & h) Was the corner reestablished through lost corner proportionate methods? If so, show the method, including the directions and distances to other public land survey corners used as evidence or used for proportioning in determining the corner location.
NO



(i) I, WILLIAM F. KELLY
(type or print name)

certify that the corner location shown on this record was determined by me or under my direction and control and that this U.S. Public Land Survey Monument Record is correct and complete to the best of my knowledge and belief.

Signature William F. Kelly Date 11-19-88