

4311021 000 2023

U.S. PUBLIC LAND SURVEY MONUMENT RECORD - LANGLADE COUNTY

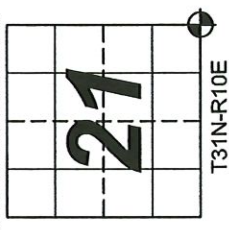
Note: This form is intended and designed to fulfill all requirements of Wisconsin Administrative Code, Chapter A-E 7.08 U.S. Public Land Survey Monument Record (3)(a)(b)(c)(d)(e)(f)(g)(h)(i). An additional sheet may be added to if necessary to conform with said requirements.

(a) Corner Location:

Langlade County Coordinates NAD83(2011):
Northing: 342895.36
Easting: 597727.91

Wisconsin Corner ID: 43110210000
Type of Monument: 3/4" Iron Rod
Location: Southeast Corner

Section 21, Township 31 North, Range 10 East,
Town of Ackley, Langlade County, Wisconsin



(b)(f)(g)(h) Description of monument found at this corner and if it was accepted, state all evidence (material, testimonial, occupational, plats, records, other monuments) used as a basis for accepting. If not accepted or if nothing was found, state evidence used as basis for establishing location. If reestablishment through lost corner proportionate methods, indicate all monuments, distances and directions used to establish. Indicate type of monument found or set and sign post.

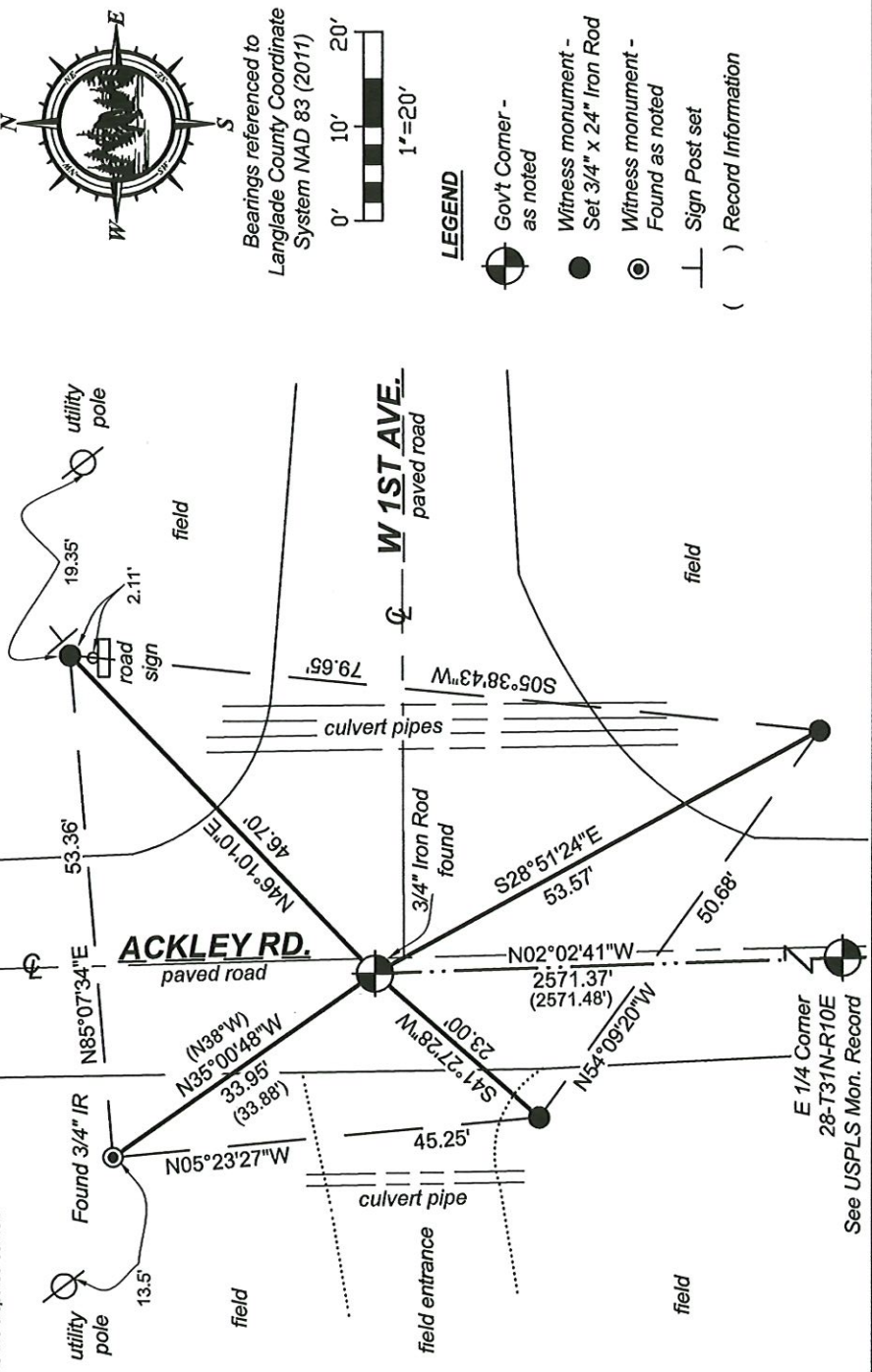
- Original Survey - 1860 Aug. - H. C. Fellows set section corner post.
- Elm 14 N21W 7 lks, Sugar 8 S74E 10 lks
- 1877 - Deleglise at corner. FB 143-22
- 1901 Aug. - Webley at corner FB 100-31.
- 1904 - B.F. Dorr at corner FB 96-23, FB 149-11.
- 1907 Dec. - Brooks at corner, found original BT Elm 14 NW 7lks. Stake set by Dorr. FB 94-37.
- 1964 Aug - WISDOT Project Number S0393(8), STH 64, shows corner symbol in location map on page 4.2. Langlade Co Map #20152.
- 1988 Aug. - Edwin Abendroth found a 3/4" Iron Bar at corner location in CSM V4 P216.
- 1990 Jan. - Edwin Abendroth found a 3/4" Iron Bar at corner location in CSM V4 P238.
- 1990 April - William Kelly found a 1" Iron bar at corner location for a survey of the E 1/2 of the SE 1/4 of Section 27. Langlade Co Map #30442.
- 1992 Nov. - WISDOT Project Number 9015-07-21, Hwy "64", shows a railroad spike at corner location on sheet 4.4. Langlade Co Map #10369
- 1994 March - Dave Tlusty found an Iron Rod at corner location in survey of NW 1/4 of Section 27. Langlade Co Map #30443.
- 1995 April - Dave Tlusty maps section lines in comparison to Kelly's section lines. No corners shown. Langlade Co Map #30502
- 1995 April - Thomas Arnott found a railroad spike at corner location in CSM V6 P96.
- 1996 Nov. - Daniel Higginbotham found a 3/4" Iron Rod at corner location in a survey of part of the NW 1/4 of Sec. 27.
- 1999 June - William Nutter found an Iron Rod at corner location for a Section breakdown survey of Langlade County Map #10504.
- 1999 Sep. - Daniel Higginbotham found a 3/4" rod at corner location in CSM V9 P02.
- 2007 Jan. - Timothy Rusch found an Iron Rod at corner location (2571.48 to E 1/4 corner) in CSM V14 P42.
- 2010 Sep. - Daniel Higginbotham found 3/4" Iron Rod at corner location in CSM V16 P48.
- 2010 Sep. - Timothy Rush found Iron Pipe at corner location in the plat of The Enclave at River Oaks, Document Number 3489939.
- 2019 June - Timothy Rusch found an Iron Rod at the corner location for a survey of part of the SE 1/4 of the NW 1/4 of Section 27. Langlade Co Map #20501.
- 2020 June - Timothy Rusch found an Iron Rod at corner location in CSM V19 P93.
- 1987 Dec. - Edwin Abendroth found and set a 3/4"x24" iron bar at distances indicated on notes and mapping provided by William Kelly, county surveyor. Witnessed with 3/4"x24" iron bars: N38°W 33.88', N60°E 33.46', S28°E 40.55', S36°W 31.05', N38°W 33.88'.
- 2023 Sep. - Chad A. Besaw found and accepted a 3/4" Iron Rod down 4" below road surface at corner location and found NW tie per previous tie sheet. Rewitnessed as shown below.

(i) I, Chad A. Besaw, Wisconsin Professional Land Surveyor #S3029, hereby certify that the corner location on this record was determined by me and that this U.S. Public Land Survey Monument Record is correct and complete to the best of my knowledge and belief.

Chad A. Besaw
Chad A. Besaw
10/18/2023
Date



(c)(d)(e) Plan view of corner with ties to at least 4 witness monuments. If in disagreement with previously established corner, show the distances between the two corners and also indicate the ties to the disputed corner.



R13 31-10

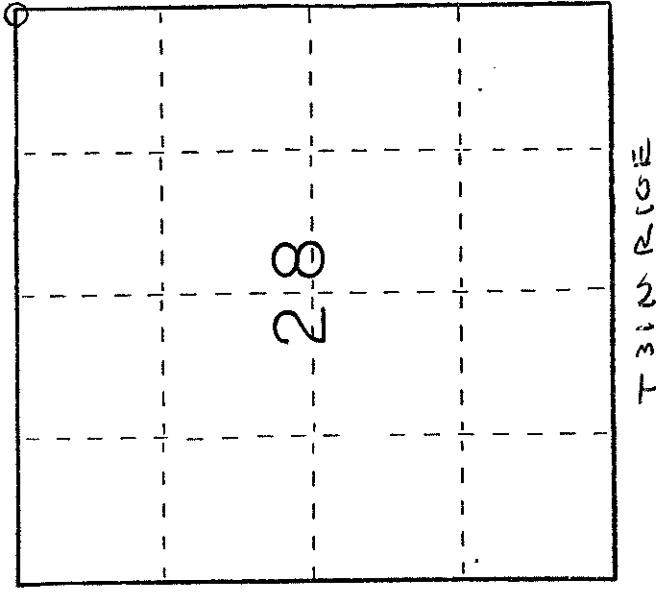
43110210000

U. S. PUBLIC LAND SURVEY MONUMENT RECORD

I N S T R U C T I O N S :

This record shall show the location of the corner and shall include all of the following nine elements (a through i).

- (a) Identify the corner by reference to the U.S. public land survey system.
- = Corner monument restored.



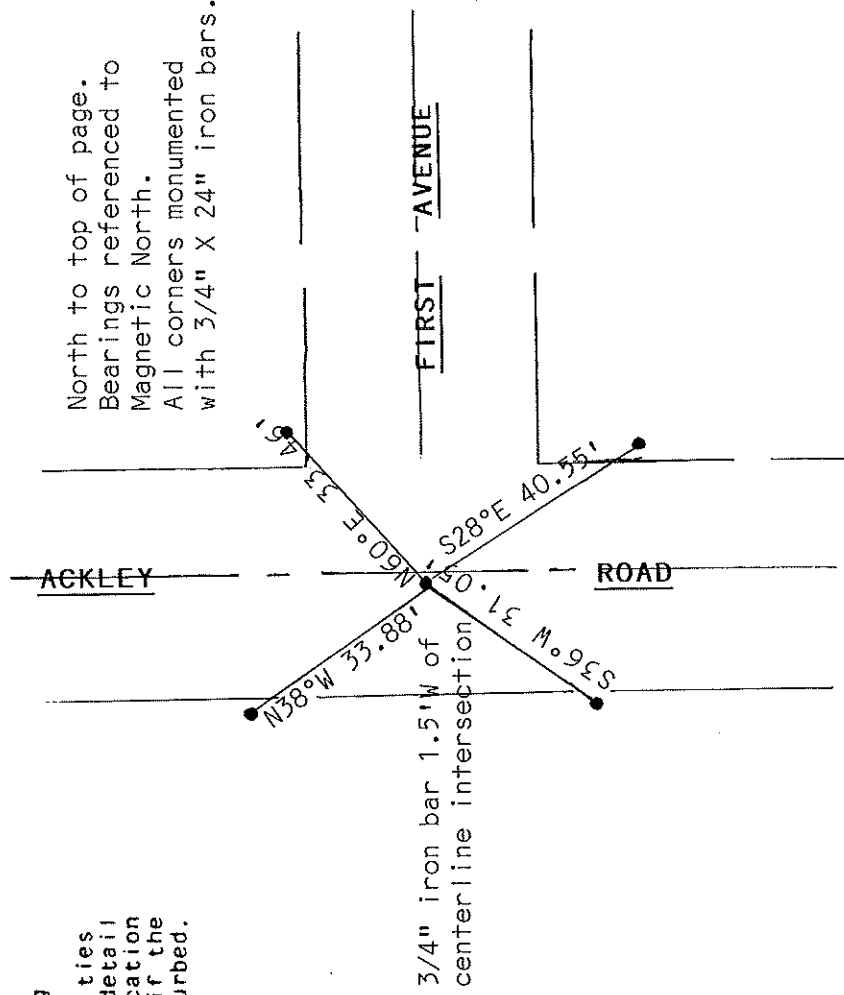
Northeast corner Sec.28, T31N, R10E

- (b) Describe any record evidence, monument evidence, occupational evidence, testimonial evidence or any other material evidence you considered, and whether the monument was found or placed.

Set 3/4" X 24" iron bar at distances indicated on notes and mapping provided by Wm F. Kelly, County Surveyor.

- (c) In the plan view drawing below, provide reference ties to at least 4 witness monuments, or, if the location is within a municipality, to at least 2 witness monuments. (Witness monuments shall be made of concrete, natural stone, iron or other equally durable material.) Describe witness monuments.

- (d) Show a plan view drawing depicting the relevant monuments and reference ties which is sufficient in detail to enable accurate relocation of the corner monument if the corner monument is disturbed. Indicate north.



North to top of page.
 Bearings referenced to Magnetic North.
 All corners monumented with 3/4" X 24" iron bars.

(e) Describe any material discrepancy between the location of the corner as restored or reestablished and the location of that corner as previously restored or reestablished by distance and direction. Show the discrepancy on the plan view drawing under (d), above. Show the distances between the corner as previously restored or reestablished and (1) the corner as restored or reestablished, and (2) to at least 2 of the witness monuments shown on the drawing in (d), above.

43110a10000

None

(f) Was the corner restored through acceptance of (1) an obliterated evidence location, or, (2) a found perpetuated location?

(2)

(g&h) Was the corner reestablished through lost corner proportionate methods? If so, show the method, including the directions and distances to other public land survey corners used as evidence or used for proportioning in determining the corner location?

No

(i) I, Edwin R. Abendroth (type or print name) certify that the corner location shown on this record was determined by me or under my direction and control and that this U.S. Public Land Survey Monument Record is correct and complete to the best of my knowledge and belief.

Edwin R. Abendroth
Signature

December 7, 1987
Date

Affix Land Surveyor Seal

