

4311016 2000 2023

# U.S. PUBLIC LAND SURVEY MONUMENT RECORD - LANGLADE COUNTY

Note: This form is intended and designed to fulfill all requirements of Wisconsin Administrative Code, Chapter A-E 7.08 U.S. Public Land Survey Monument Record (3)(e)(b)(c)(d)(e)(f)(g)(h)(i). An additional sheet may be added to if necessary to conform with said requirements.

(e) Corner Location:

Wisconsin Corner ID: 43110162000

Type of Monument: 3" Brass Capped Monument

Location: East Quarter Corner

Section 16, Township 31 North, Range 10 East,

Town of Ackley, Langlade County, Wisconsin

Langlade County Coordinates NAD83(2011):

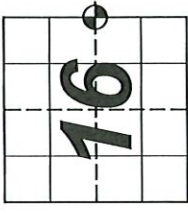
Northing: 350396.04

Easting: 597581.14

RTK GPS direct observation

Calibrated to HMP DP2804 (Ackley C GPS)

3 position average on 9/15/2023



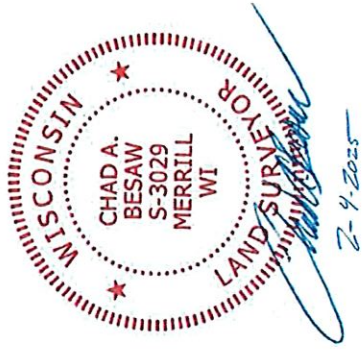
T31N-R10E

(f) I, Chad A. Besaw, Wisconsin Professional Land Surveyor #S3029, hereby certify that the corner location on this record was determined by me and that this U.S. Public Land Survey Monument Record is correct and complete to the best of my knowledge and belief.

Chad A. Besaw

2/4/2025

Date



(b)(f)(g)(h) Description of monument found at this corner and if it was accepted, state all evidence (material, testimonial, occupational, plats, records, other monuments) used as a basis for accepting. If not accepted or if nothing was found, state evidence used as basis for establishing location. If reestablishment through lost corner proportionate methods, indicate all monuments, distances and directions used to establish. Indicate type of monument found or set and sign post.

Original Survey - 1860 Aug. - H. C. Fellows set quarter section post. Birch 15 S66E 17 lks, Birch 12 N53W 15 lks.

1902 - B.F. Dorr established new BT. Sugar 10 N84E 37 1/2 lks. FB 97-134. At corner again in 1905 FB 96-52, 1905 FB 149-11.

1938 July - Hutchinson did not find old stone (possibly set by Dorr). Set Y iron 3 feet long, iron N79W 53lks.

1969 July - Robert Poss (RLS #S-0001 per tie sheet) found iron piece, "Y" iron 3 ft long, under blacktop 3'+/- by Hutchinson 1938. Did not find strap iron N79W53 as noted. Does not specify monument set if any. Witnessed with 1.5" red IP with Brass Cap marked witness corner S60°E 42.0', and a Brass Cap in concrete monument marked witness corner 2 rods West.

2000 May - D. Tlusty found Y iron 12" below the road surface. Top 12" of Y iron is leaning, bottom 12" of Y iron is vertical in the clay road base. Removed Y iron and replaced it with a 1" x 30" iron pipe, top of which is 26" below the road surface. Topped the 1" iron pipe with a new 2" x 30" galvanized, flared bottom iron pipe with a 3-1/4" brass cap set flush with the pavement. Set the found Y iron on the south side of the 2" iron pipe set.

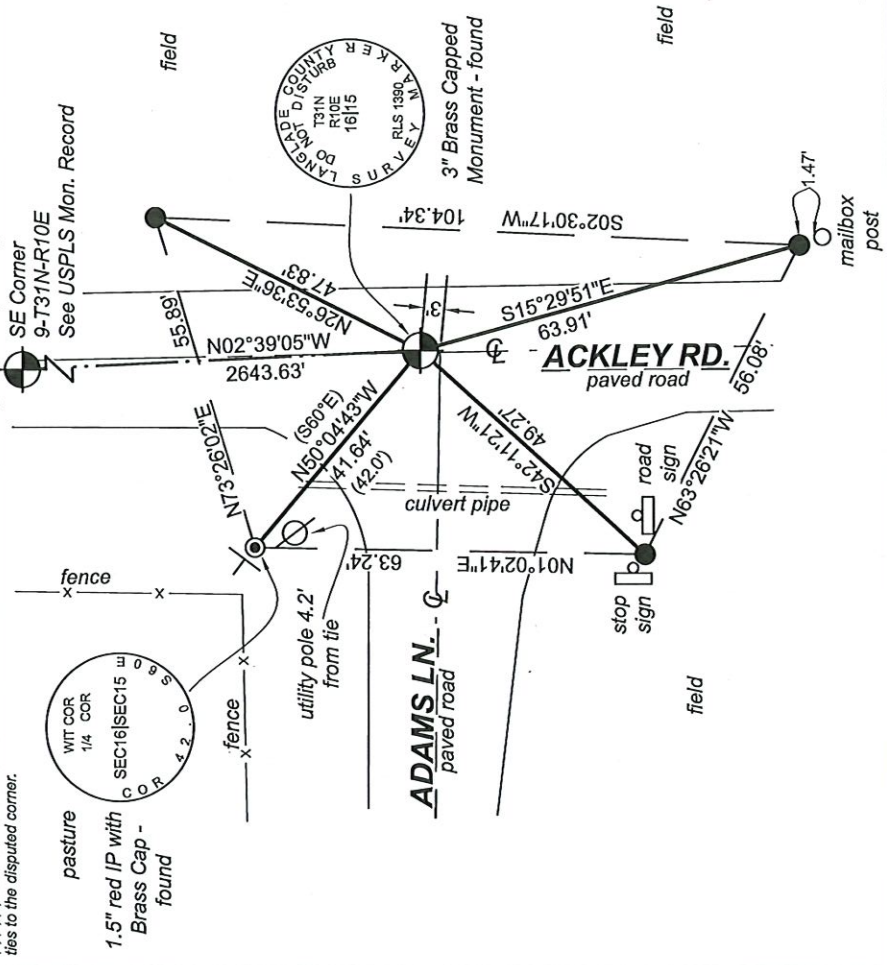
2011 April - Timothy Rusch found a brass capped monument at corner location in CSM V16 P75.

2012 Dec. - Timothy Rusch found a brass capped monument at corner location in CSM V16 P184.

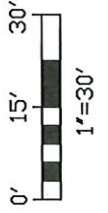
2019 Jan. - Timothy Rusch found a brass capped monument at corner location in CSM V19 P4.

2023 Sep. - Chad A. Besaw found a 3" stamped brass capped monument 1" below road surface at intersection of town roads. Found Poss' NW tie in good condition. Rewitnessed as shown below.

(c)(d)(e) Plan view of corner with ties to at least 4 witness monuments. If in disagreement with previously established corner, show the distances between the two corners and also indicate the ties to the disputed corner.



Bearings referenced to Langlade County Coordinate System NAD 83 (2011)

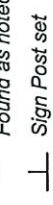
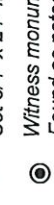


1"=30'

### LEGEND



Witness monument - Set 3/4" x 24" Iron Rod



( ) Record Information

L13 31-10

CERTIFIED LAND CORNER RESTORATION

31-10  
Index No. L-13

State of Wisconsin }  
County of LANGLADE } ss.

I ROBERT J. POSS, do hereby certify that on the 12TH day of JULY, 1969, I found evidence of the 1/4 SEC. COR corner of SECS. 15 & 16 Township 31, North, Range 10 EAST, Fourth, Principal Meridian, as described hereon; and that from this evidence I established a new monument and accessories as described hereon to perpetuate the original location of this corner.

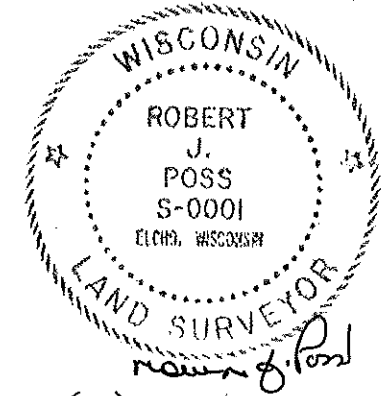
Resident witnesses:

.....  
.....  
.....

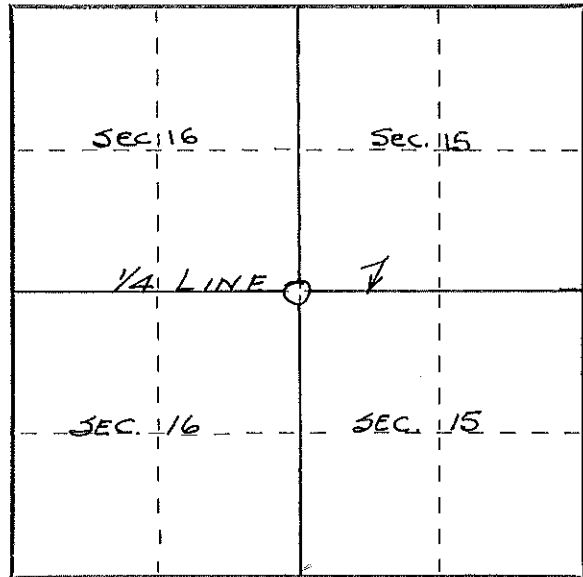
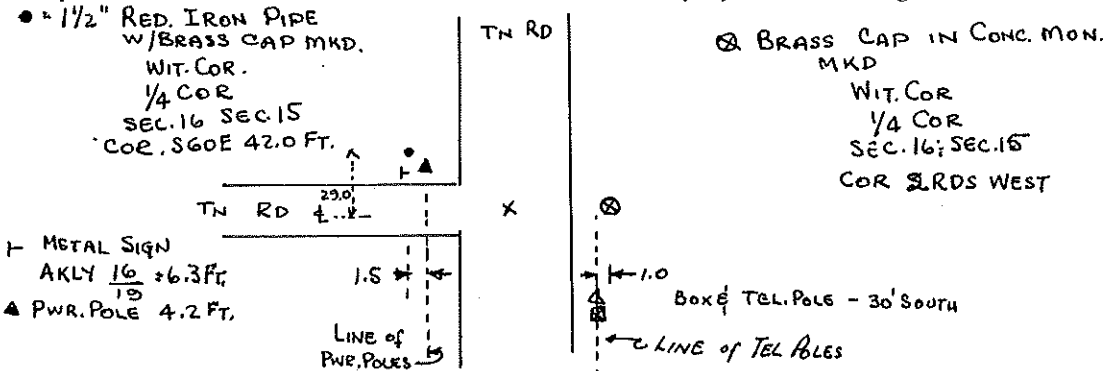
History of original corner establishment:

Description of corner evidence found:

IRON PIECE - "Y" IRON 3 FT. LONG - UNDER BLACK TOP (3 1/2)  
BY HUTCHINSON - 1938. DID NOT FIND STRAP IRON N79W53 AS NOTED IN H'S. NOTES.



Description of monument and accessories I established to perpetuate the original location of this corner.



Dated at ELCHO, Wis., this 12TH day of JULY, 1969.

Signature Robert J. Poss Title REG. LAND SURVEYOR Registration No. S-0001.  
(County Surveyor, Registered Land Surveyor, or other duly authorized official)

Office of Register of Deeds, County of \_\_\_\_\_, I hereby certify that the within instrument was filed in this office for record on the \_\_\_\_\_ day of \_\_\_\_\_, 19\_\_\_\_ at \_\_\_\_\_ o'clock \_\_\_\_\_ M.

(Register of Deeds)

By \_\_\_\_\_ Deputy

○ = Corner monument restored.