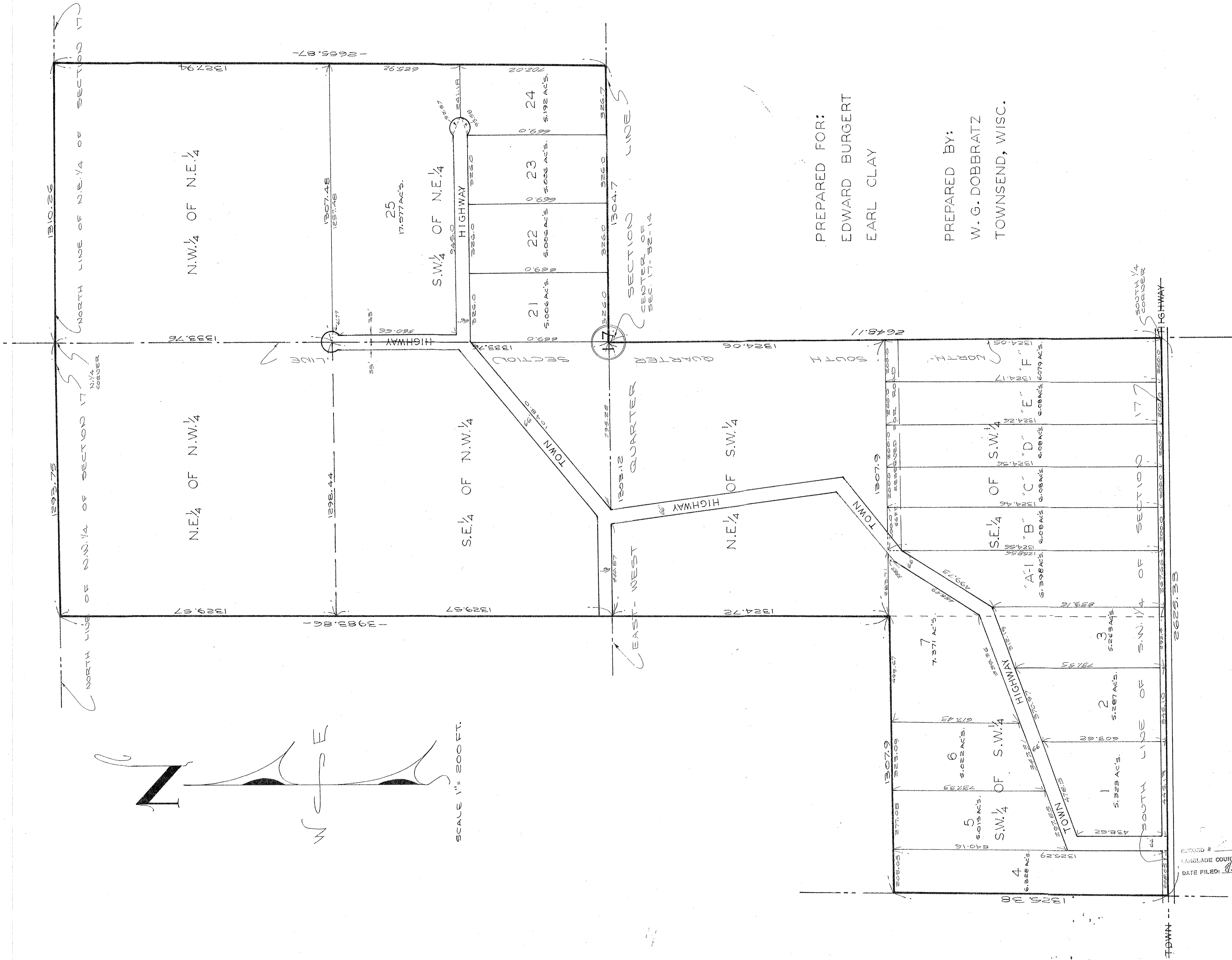


PLAT

OF PART OF SECTION 17, TOWNSHIP 32 NORTH, RANGE 14 EAST, IN LANGLADE CO., WISC.



PREPARED FOR:  
EDWARD BURGERT  
EARL CLAY

PREPARED BY:  
W. G. DOBBRATZ  
TOWNSEND, WISC.

RECORD # 40513  
LANGLADE COUNTY SURVEYORS OFFICE  
DATE FILED: 8/24/18 BY: D. JENSEN