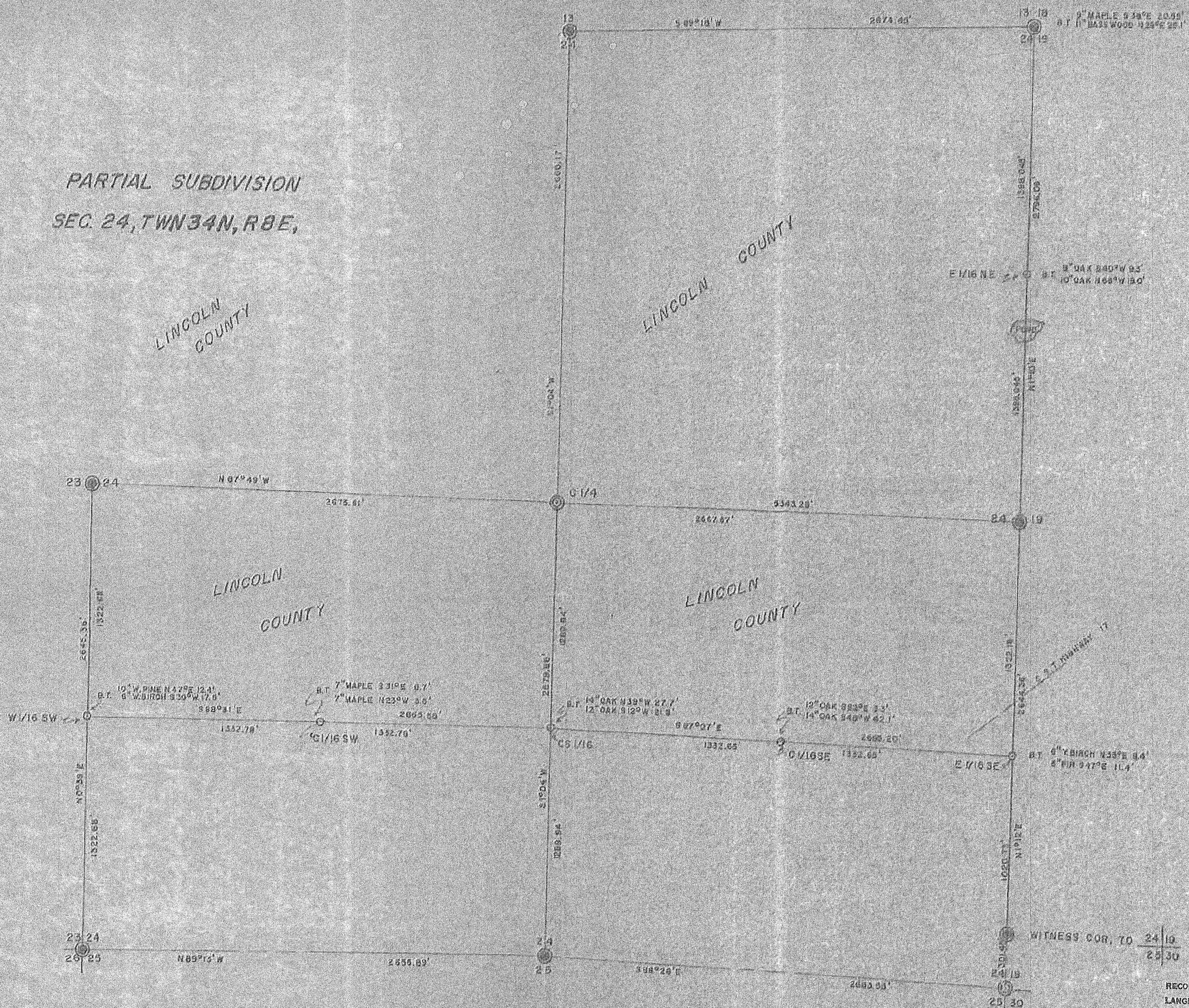
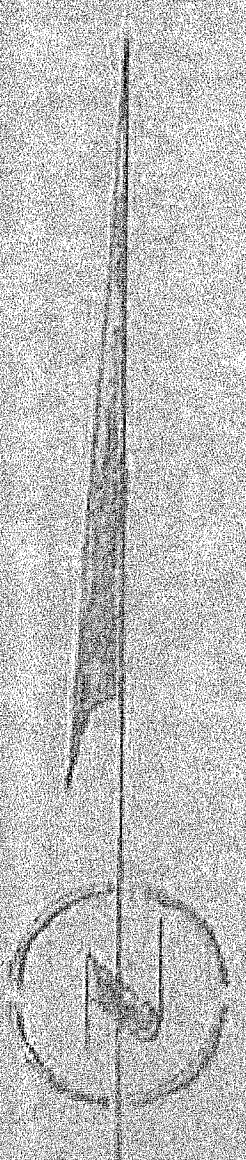


PARTIAL SUBDIVISION
SEC. 24, TWN 34N, R8E,



⊙ GRANITE MONUMENT ⊕ IRON MONUMENT

RECORD # 30541 40492
LANGLADE COUNTY SURVEYORS OFFICE
DATE FILED: 3/31/73 BY: D. TRUSTY

	SURVEY FOR	
	LINCOLN CO. FORESTRY DEPT.	
	MERRILL	WISCONSIN
	SCALE 1" = 400' DATE 27 JAN 71 DWG. NO. 3914-24	
GENISOT AND ASSOCIATES, INC. BIRNLAENDER, WIS.		