

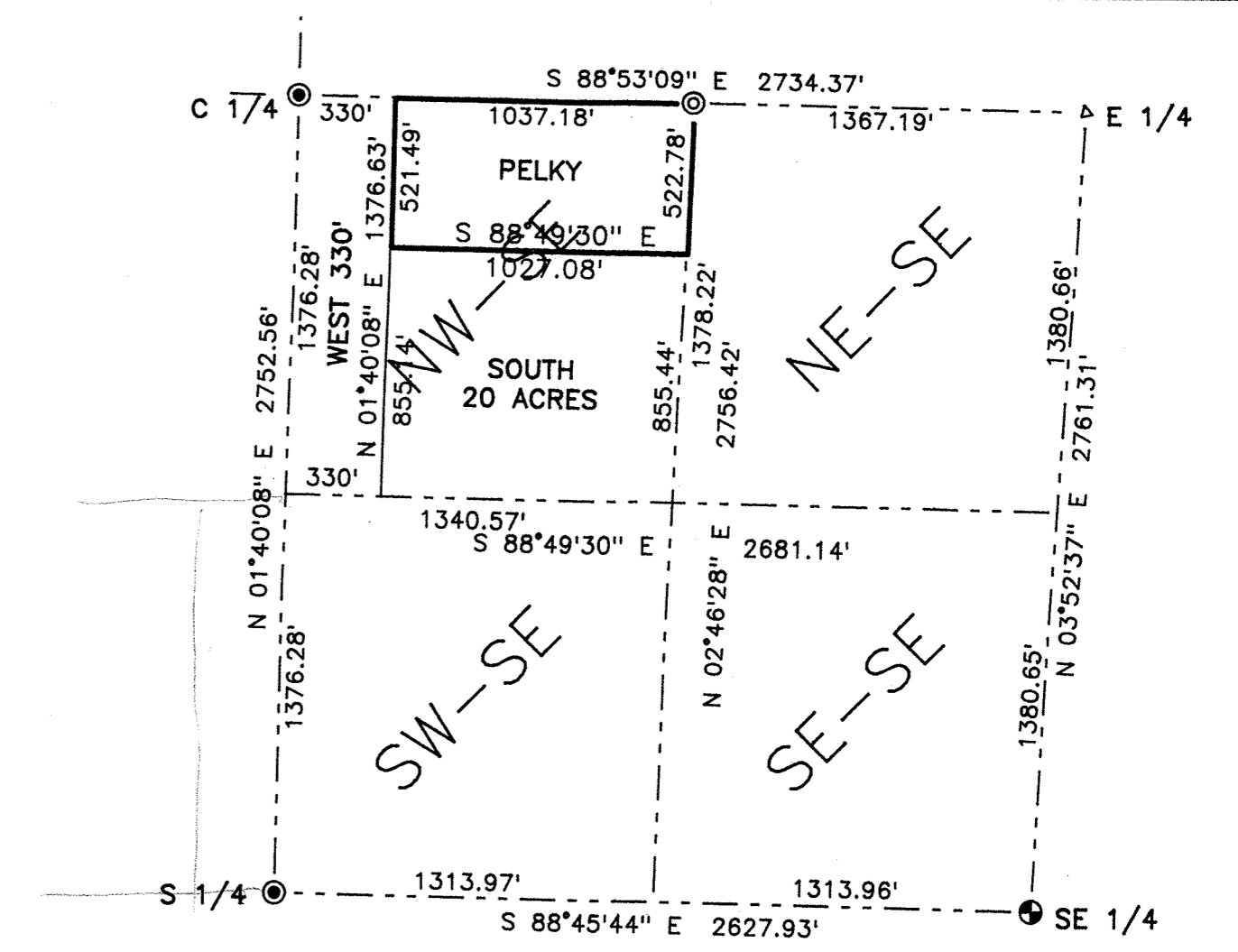
UPPER POST LAKE

LOT 11
BLK. 3
OF
SUNSET
VIEW
PARK

POST LAKE DRIVE

Point on the South line of Lot 14, Blk. 3 of
Sunset View Park Plat, 12.8 feet Southwesterly from
the Southeast corner of said Lot 14.

*11/29/93
TOM A. SAYS NO PIPE
WAS SET HERE
D.T.*



DETAIL OF SE 1/4 OF SECTION 11, T34N, R11E
AND BREAKDOWN OF NW-SE THEREOF.
1" = 600'

CSM Vol. 3, Pg. 230

Iron pipe found at corner of
Lots 2, 3 & 4 of Block 3,
Sunset View Park.

S 15°55'04" E 9.16'
S 88°53'09" E 330.00'

Center 1/4 corner
Sec. 11-34-11
Found concrete mon. with brass cap

S 74°58'33" W 352.69'
S 17°19'44" E 145.58'

31,552 sq. ft.
0.72 Ac.

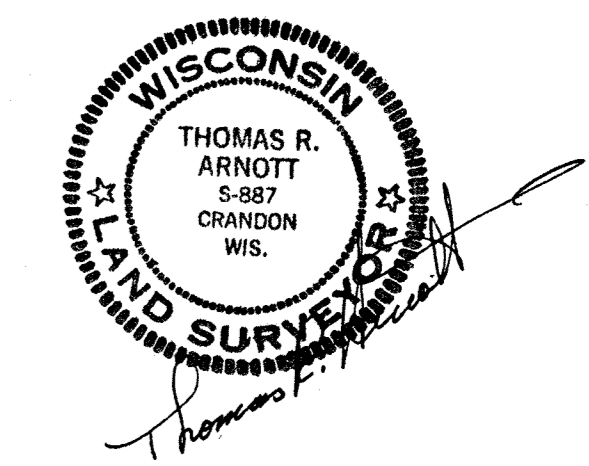
S 88°53'09" E 304.49'

S 88°53'09" E 732.69'

South line, Gov't. Lot 7
North line, NW-SE

East-West quarter line, Section 11
S 88°53'09" E 1367.19'

EAST
South 1/4 corner
Sec. 11-34-11
Found railroad spike.



- LEGEND**
- 1" iron pipe set
 - ⊙ 2" iron pipe set
 - Iron pipe found.
 - ▲ Found RR spike
 - ⊕ Found concrete mon. with brass cap
 - ⊗ Found 4" iron pipe with brass cap
 - ⊙ Iron pin set
 - Boundary of parcel surveyed.

RECORD # 40147
LANGLADE COUNTY SURVEYORS OFFICE
DATE FILED: 11/19/93 BY: D.T.

THOMAS R. ARNOTT
REGISTERED LAND SURVEYOR
P.O. BOX 635
ANTIGO, WIS. 54409

MAP OF SURVEY FOR FABIAN PELKY
PART OF THE NW-SE, PART OF GOVT. LOT 7,
AND ALL OF LOT 11, BLK 3 OF SUNSET VIEW
PARK, ALL IN SEC. 11, T34 N, R 11 E,
TOWN OF ELCHO, LANGLADE COUNTY, WI.

SCALE: 1" = 60' DATE: 28 Oct., 1993

South 1/4 corner
Sec. 11-34-11
Found concrete mon. with brass cap

N 1°40'08" E 2792.56'
North-South quarter line, Section 11

N 01°40'08" E 521.49'

East line, West 330'

North line of the South 20 acres lying East of the West 330'

N 88°49'30" W 1027.08'

479,844 sq. ft.
11.02 Ac.

HOUSE

TURTLE LAKE ROAD
N 1°00'19" E 522.49'

24,465 sq. ft.
0.562 Ac.

S 02°46'28" W 522.78'

S 1°00'19" W 522.45'

S 1°00'19" W 522.52'

S 1°00'19" W 522.52'

S 1°00'19" W 522.52'

S 1°00'19" W 522.52'

S 1°00'19" W 522.52'

S 1°00'19" W 522.52'

S 1°00'19" W 522.52'

S 1°00'19" W 522.52'

S 1°00'19" W 522.52'

S 1°00'19" W 522.52'

S 1°00'19" W 522.52'

S 1°00'19" W 522.52'

S 1°00'19" W 522.52'

S 1°00'19" W 522.52'

S 1°00'19" W 522.52'

S 1°00'19" W 522.52'

S 1°00'19" W 522.52'

S 1°00'19" W 522.52'

S 1°00'19" W 522.52'

S 1°00'19" W 522.52'

S 1°00'19" W 522.52'

S 1°00'19" W 522.52'

S 1°00'19" W 522.52'

S 1°00'19" W 522.52'