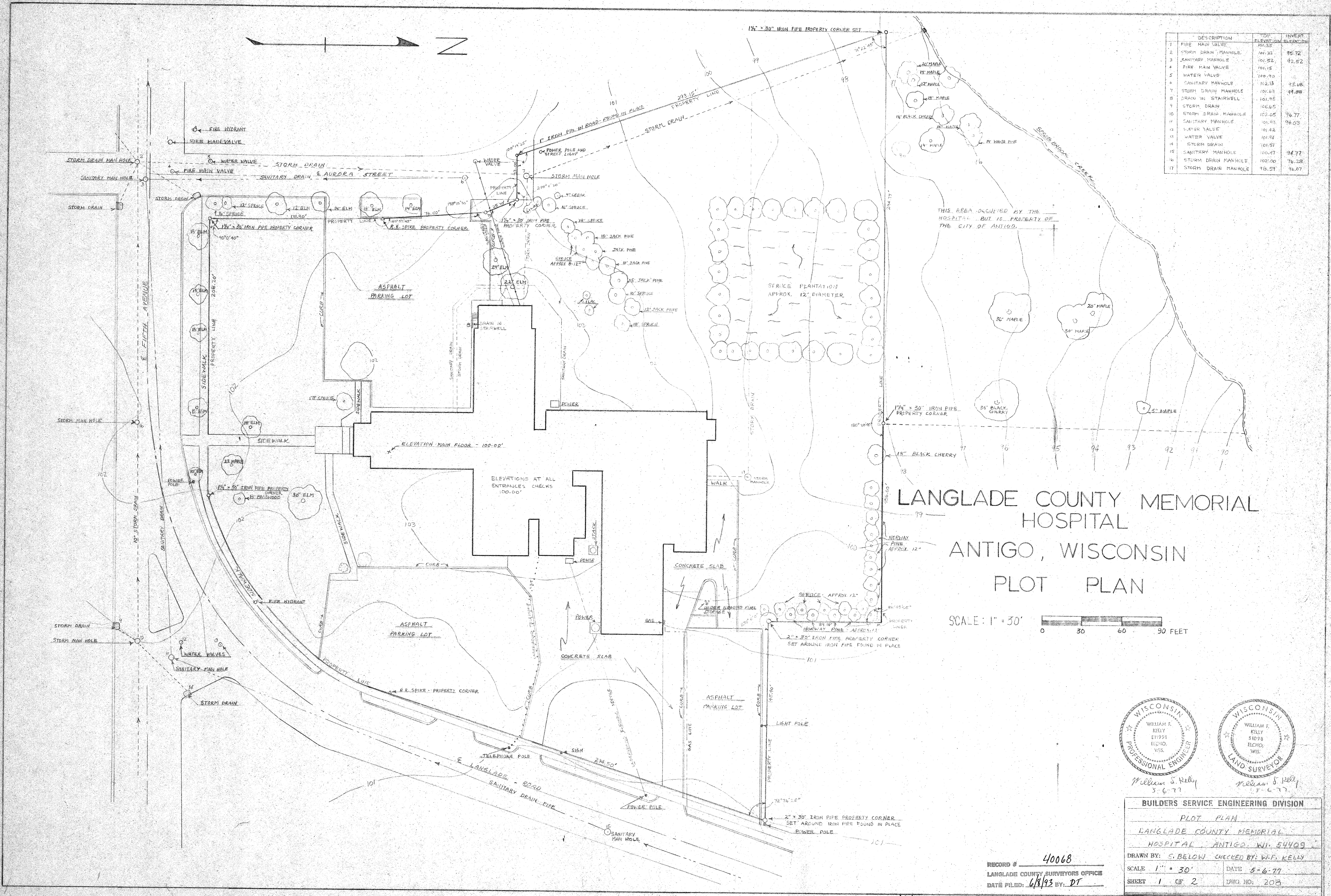
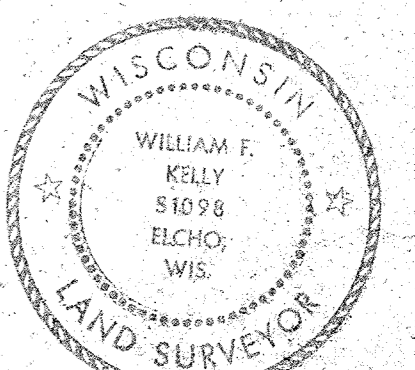
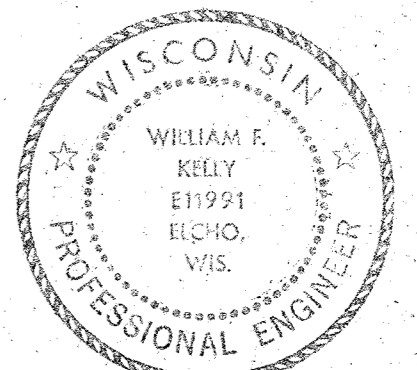
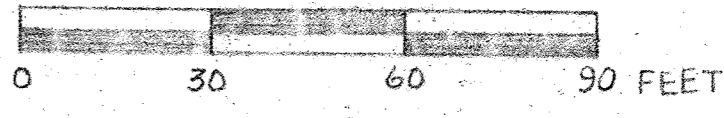


NO.	DESCRIPTION	FEET	ELEVATION	INVERT
1	FIRE MAIN VALVE	101.55		
2	STORM DRAIN MANHOLE	101.52	95.72	
3	SANITARY MANHOLE	101.52	92.52	
4	FIRE MAIN VALVE	101.15		
5	WATER VALVE	100.90		
6	SANITARY MANHOLE	102.13	95.18	
7	STORM DRAIN MANHOLE	101.63	94.88	
8	DRAIN IN STAIRWELL	101.96		
9	STORM DRAIN	102.65		
10	STORM DRAIN MANHOLE	102.05	96.77	
11	SANITARY MANHOLE	101.93	94.03	
12	WATER VALVE	101.42		
13	WATER VALVE	101.74		
14	STORM DRAIN	101.51		
15	SANITARY MANHOLE	100.47	94.77	
16	STORM DRAIN MANHOLE	102.00	96.28	
17	STORM DRAIN MANHOLE	98.57	96.07	



LANGLADE COUNTY MEMORIAL HOSPITAL
ANTIGO, WISCONSIN
PLOT PLAN

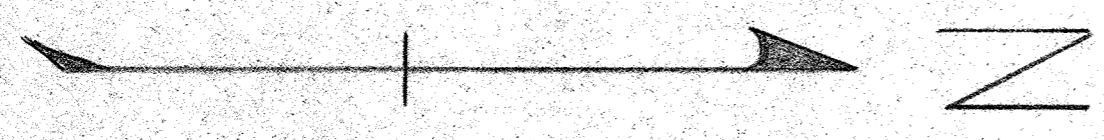
SCALE: 1" = 30'



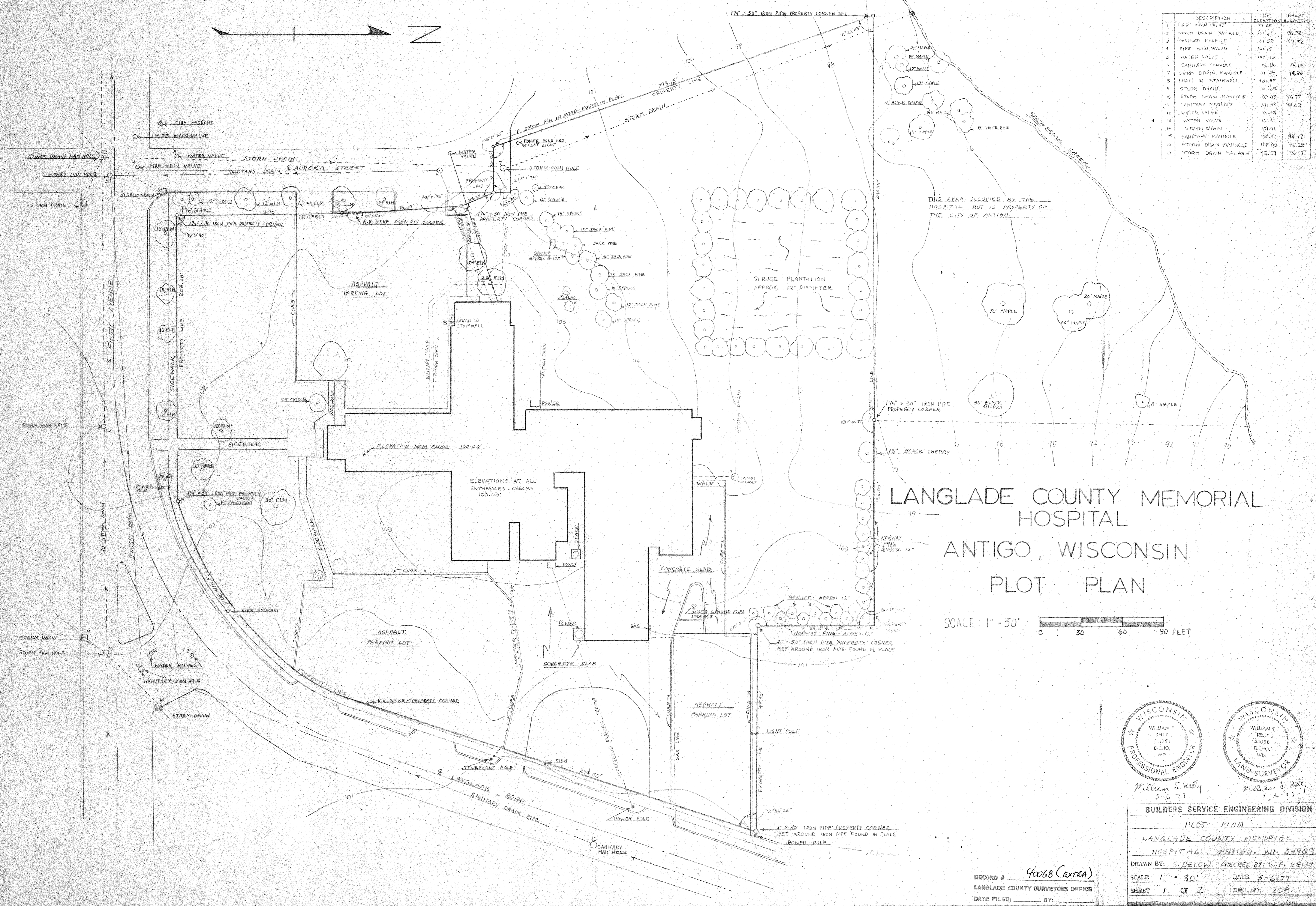
William F. Kelly
5-6-77

BUILDERS SERVICE ENGINEERING DIVISION	
PLOT PLAN	
LANGLADE COUNTY MEMORIAL HOSPITAL ANTIGO, WIS. 54409	
DRAWN BY: S. BELOW	CHECKED BY: W.F. KELLY
SCALE 1" = 30'	DATE 5-6-77
SHEET 1 OF 2	DWG. NO. 208

RECORD # 40068
LANGLADE COUNTY SURVEYORS OFFICE
DATE FILED: 6/18/92 BY: DT

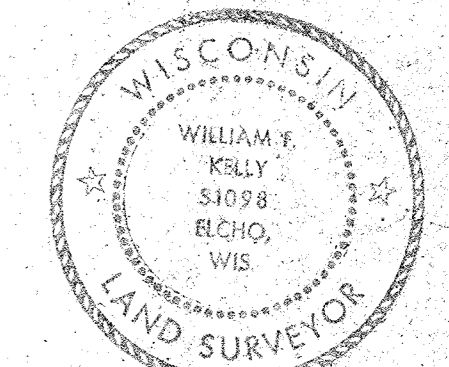
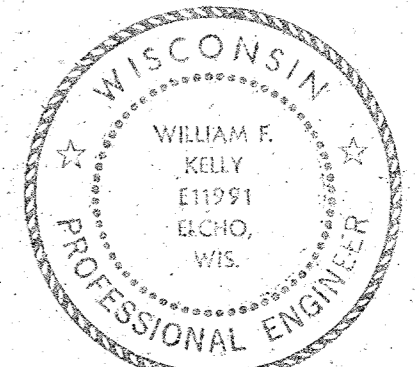


NO.	DESCRIPTION	SP. ELEVATION	INVERT ELEVATION
1	FIRE MAIN VALVE	101.35	
2	STORM DRAIN MANHOLE	101.32	95.72
3	SANITARY MANHOLE	101.52	92.52
4	FIRE MAIN VALVE	101.15	
5	WATER VALVE	100.40	
6	SANITARY MANHOLE	102.13	93.68
7	STORM DRAIN MANHOLE	101.65	94.89
8	DRAIN IN STAIRWELL	101.95	
9	STORM DRAIN	101.65	
10	STORM DRAIN MANHOLE	102.05	96.77
11	SANITARY MANHOLE	101.45	94.03
12	WATER VALVE	101.42	
13	WATER VALVE	101.74	
14	STORM DRAIN	100.47	
15	SANITARY MANHOLE	100.47	94.77
16	STORM DRAIN MANHOLE	102.00	96.25
17	STORM DRAIN MANHOLE	98.59	94.07



LANGLADE COUNTY MEMORIAL HOSPITAL
ANTIGO, WISCONSIN
PLOT PLAN

SCALE: 1" = 30'



William F. Kelly
5-6-77

BUILDERS SERVICE ENGINEERING DIVISION	
PLOT PLAN	
LANGLADE COUNTY MEMORIAL HOSPITAL ANTIGO, WI. 54409	
DRAWN BY: S. BELOW CHECKED BY: W.F. KELLY	
SCALE: 1" = 30'	DATE: 5-6-77
SHEET 1 OF 2	DWG. NO. 203

RECORD # 40068 (EXTRA)
LANGLADE COUNTY SURVEYORS OFFICE
DATE FILED: BY: