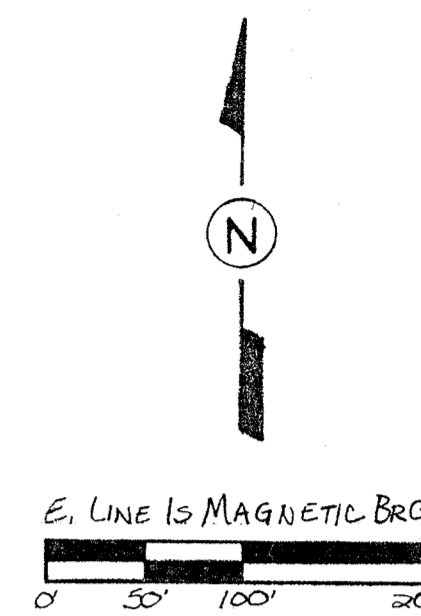


# MAP OF SURVEY

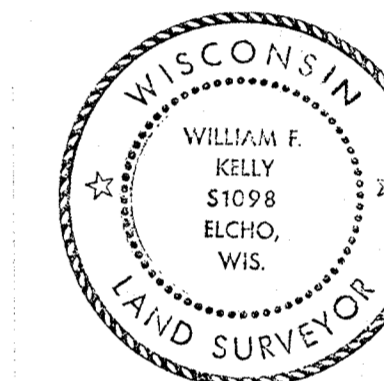
## FOR: FRANK BENES

LOCATED IN THE NW NE & SW NE & SE NE, SECTION 21, T32N, R11E,  
TOWN OF NEVA, LANGLADE COUNTY, WI

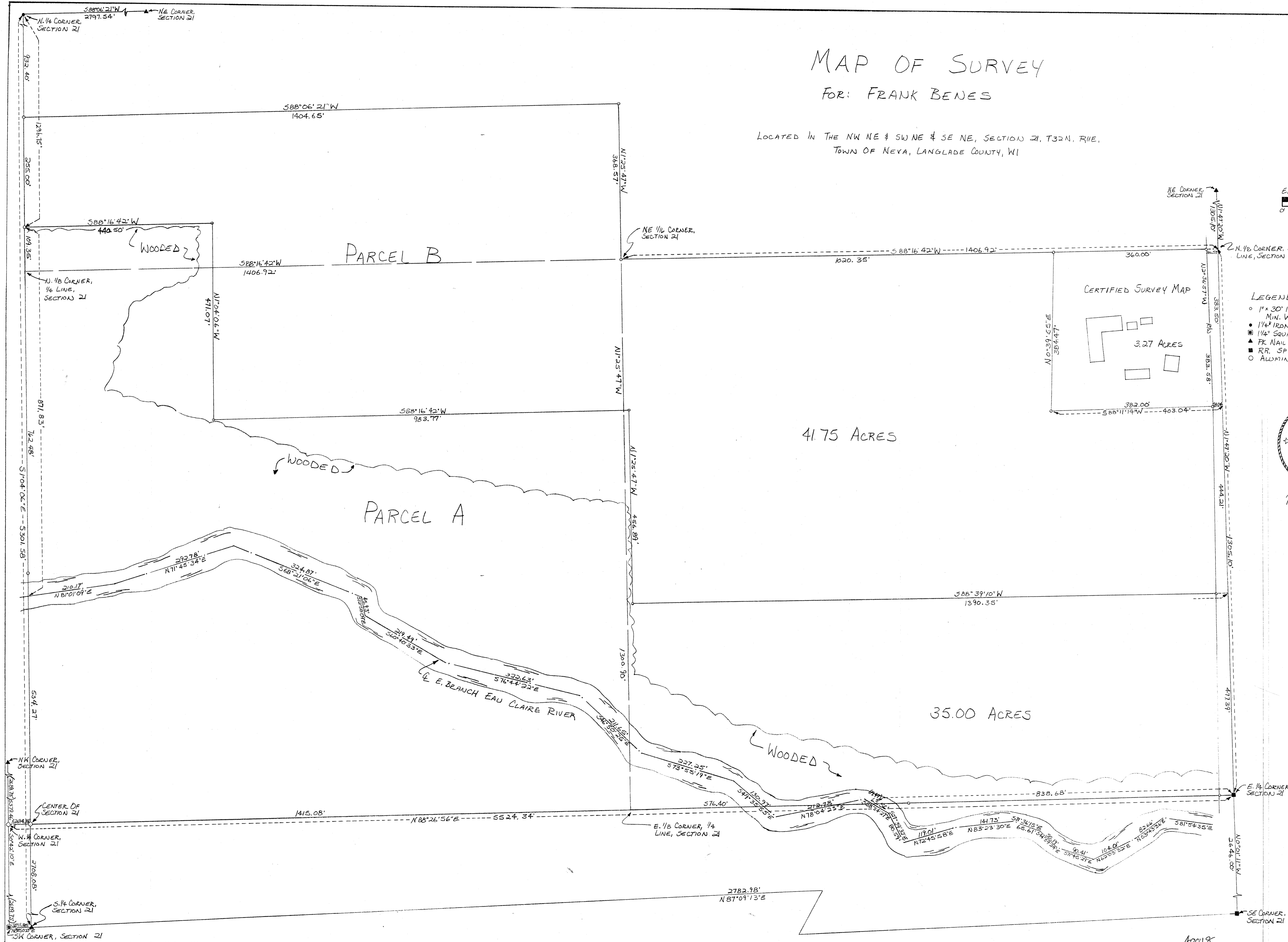
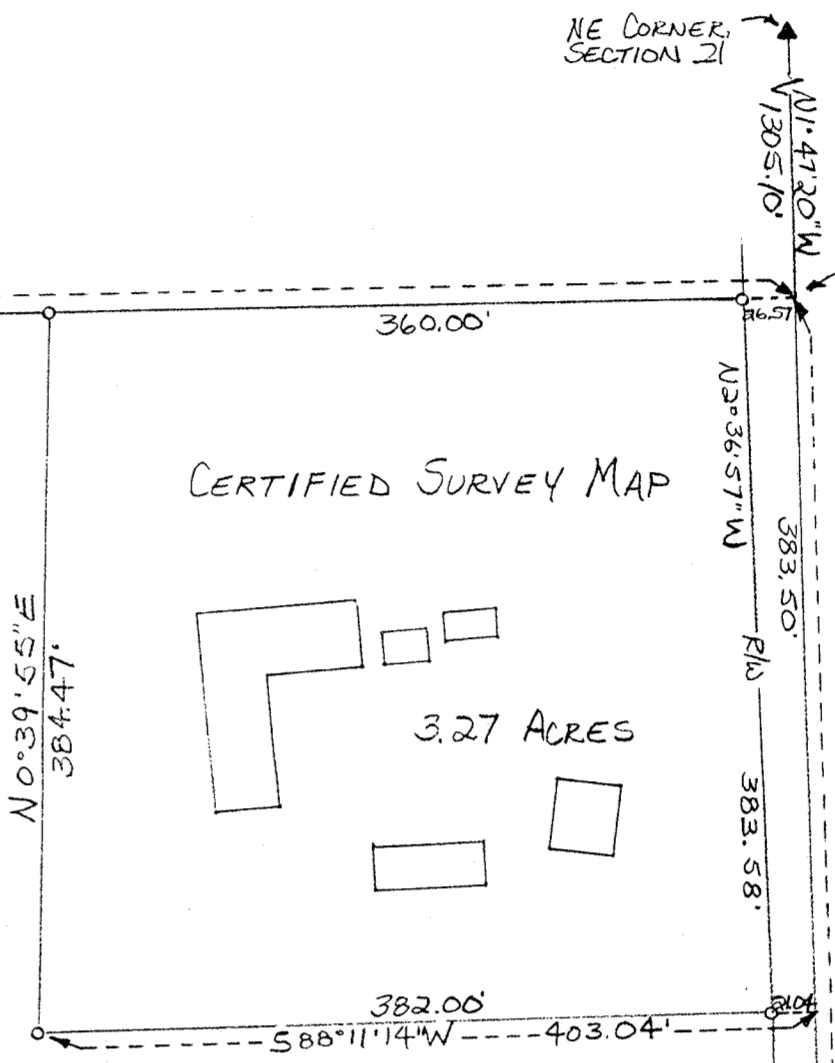


SCALE: 1"=100'

- LEGEND:
- 1" x 30" IRON PIPE, SET, MIN. WT. 1.13"/L.F.
  - 1 1/2" IRON PIPE, FOUND IN PLACE
  - 1 1/2" SQUARE IRON BAR, FOUND IN PLACE
  - ▲ PK NAIL, FOUND IN PLACE
  - RR SPIKE, FOUND IN PLACE
  - ALUMINUM MONUMENT, TO BE SET



William F. Kelly  
2-26-90



BUILDERS SERVICE ENGINEERING DIVISION
SURVEY MAP
FOR: FRANK BENES
SECTION 21, T32N, R11E
DRAWN BY: LISA J. REYNOLDS
SCALE: 1"=100'
SHEET 1 OF 1
DATE: FEBRUARY 27, 1990
DWG. NO: 2310

RECORD # 40018  
LANGLADE COUNTY SURVEYORS OFFICE  
DATE FILED: 6-3-93 BY: SJF