

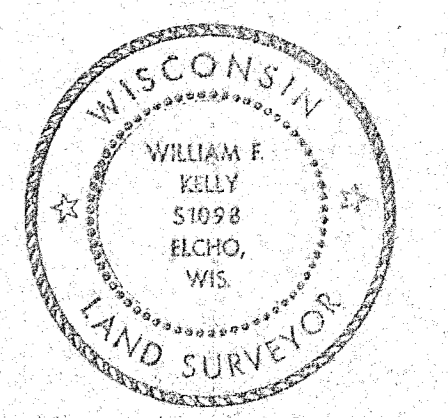
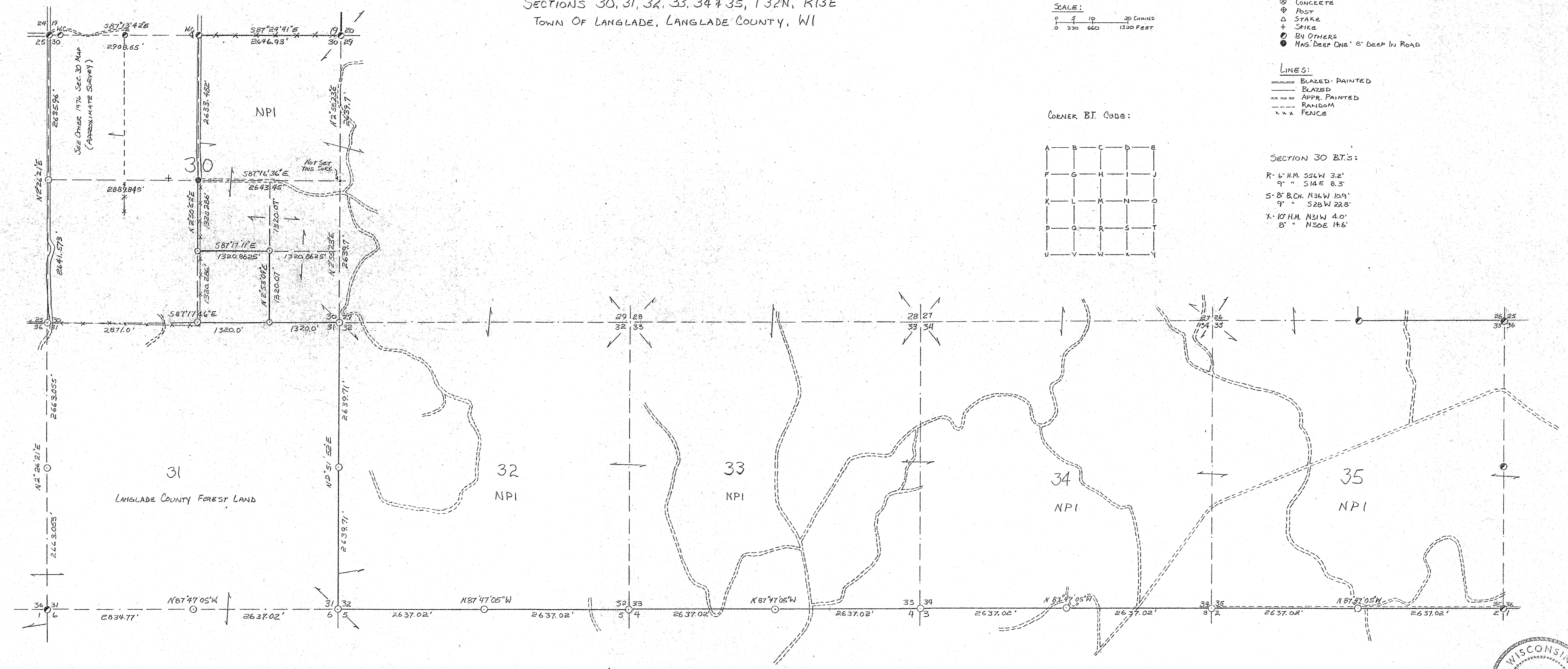
NEKOOSA PAPERS INC.
OWNERSHIP BOUNDARY SURVEY

SECTIONS 30, 31, 32, 33, 34 & 35, T32N, R13E
TOWN OF LANGLADE, LANGLADE COUNTY, WI



SCALE:
0 10 20 CHAINS
0 330 660 1320 FEET

- LEGEND:**
- CORNERS:**
 ○ IRON PIPE OR CAP
 ⊗ CONCRETE
 ⊕ POST
 △ STAKE
 + SPIKE
 * BY OTHERS
 ● MAG. DEEP ONE' & DEEP IN ROAD
- LINES:**
 — BLAZED, PAINTED
 - - - BLAZED
 - - - - - APPR. PAINTED
 - - - - - RANDOM
 --- FENCE
- CORNER B.T. CODE:**
- | | | | | |
|---|---|---|---|---|
| A | B | C | D | E |
| F | G | H | I | J |
| K | L | M | N | O |
| P | Q | R | S | T |
| V | W | X | Y | Z |
- SECTION 30 B.T.S.:**
 R - 6" H.M. S56W 3.2'
 9" - 514E 0.3'
 S - 8" B.C.H. N36W 10.9'
 9" - 528W 22.8'
 X - 10" H.M. N31W 4.0'
 8" - N50E 14.6'



William F. Kelly
7-19-88

BUILDERS SERVICE ENGINEERING DIVISION	
NEKOOSA PAPERS INC.	
OWNERSHIP BOUNDARY SURVEY	
T32N R13E	
RECORD # 40017	
DRAWN BY: LISA REYNOLDS	
SCALE AS SHOWN	DATE JULY 19, 1988
SHEET 1 OF 1	DWG. NO: 1956
LANGLADE COUNTY SURVEYORS OFFICE	
DATE FILED: 6-7-93 BY: SJF	