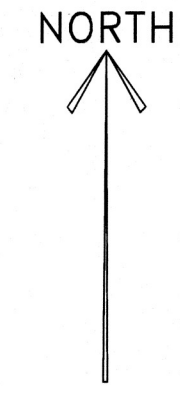
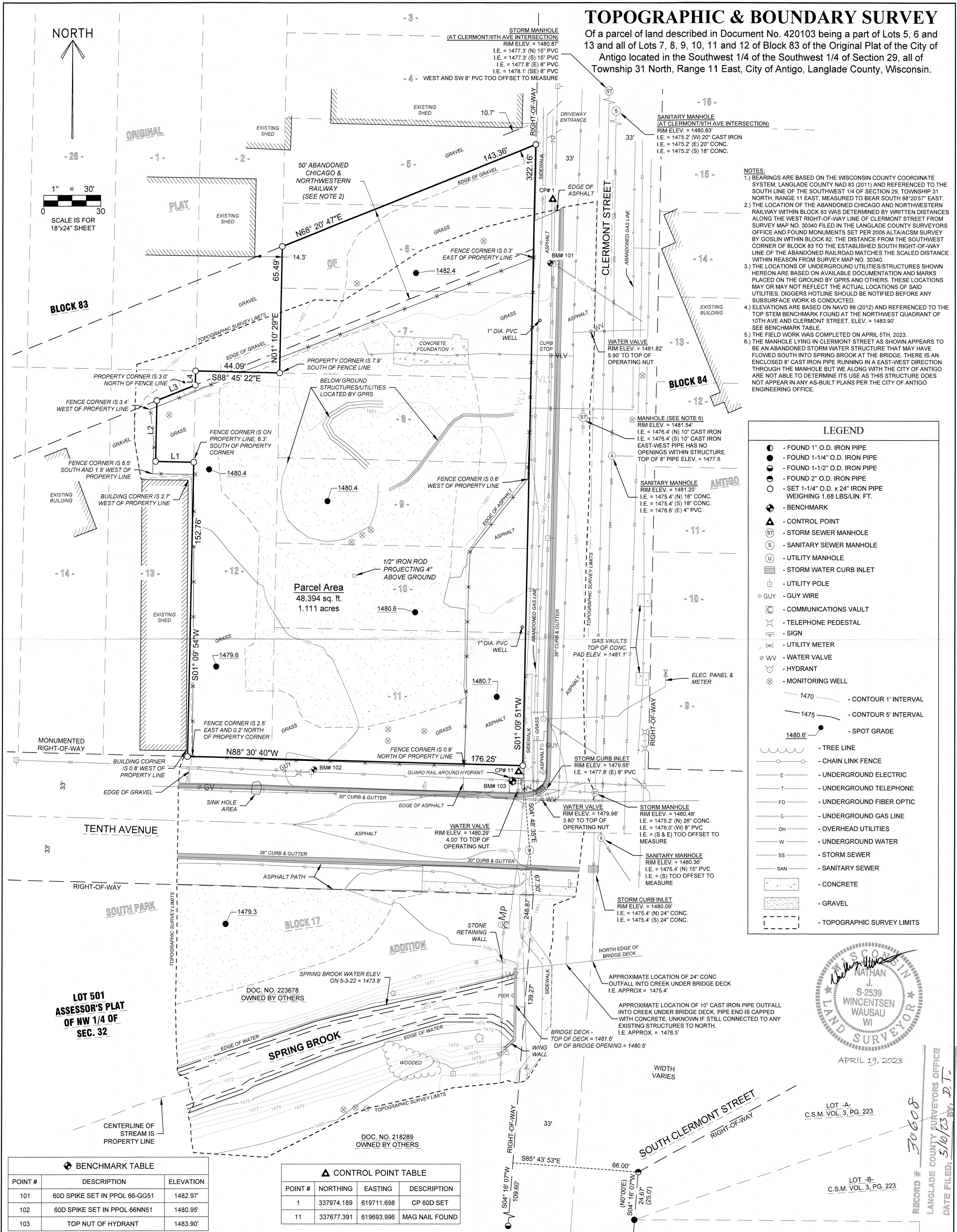


# TOPOGRAPHIC & BOUNDARY SURVEY

Of a parcel of land described in Document No. 420103 being a part of Lots 5, 6 and 13 and all of Lots 7, 8, 9, 10, 11 and 12 of Block 83 of the Original Plat of the City of Antigo located in the Southwest 1/4 of the Southwest 1/4 of Section 29, all of Township 31 North, Range 11 East, City of Antigo, Langlade County, Wisconsin.



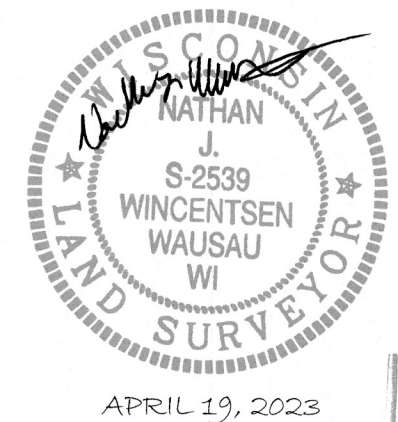
1" = 30'  
SCALE IS FOR 18"x24" SHEET



- NOTES:**
- 1) BEARINGS ARE BASED ON THE WISCONSIN COUNTY COORDINATE SYSTEM, LANGLADE COUNTY NAD 83 (2011) AND REFERENCED TO THE SOUTH LINE OF THE SOUTHWEST 1/4 OF SECTION 29, TOWNSHIP 31 NORTH, RANGE 11 EAST, MEASURED TO BEAR SOUTH 88°20'57" EAST.
  - 2) THE LOCATION OF THE ABANDONED CHICAGO AND NORTHWESTERN RAILWAY WITHIN BLOCK 83 WAS DETERMINED BY WRITTEN DISTANCES ALONG THE WEST RIGHT-OF-WAY LINE OF CLERMONT STREET FROM SURVEY MAP NO. 30340 FILED IN THE LANGLADE COUNTY SURVEYORS OFFICE AND FOUND MONUMENTS SET PER 2006 ALTA/ACSM SURVEY BY GOSLIN WITHIN BLOCK 82. THE DISTANCE FROM THE SOUTHWEST CORNER OF BLOCK 83 TO THE ESTABLISHED SOUTH RIGHT-OF-WAY LINE OF THE ABANDONED RAILROAD MATCHES THE SCALED DISTANCE WITHIN REASON FROM SURVEY MAP NO. 30340.
  - 3) THE LOCATIONS OF UNDERGROUND UTILITIES/STRUCTURES SHOWN HEREON ARE BASED ON AVAILABLE DOCUMENTATION AND MARKS PLACED ON THE GROUND BY GPRS AND OTHERS. THESE LOCATIONS MAY OR MAY NOT REFLECT THE ACTUAL LOCATIONS OF SAID UTILITIES. DIGGERS HOTLINE SHOULD BE NOTIFIED BEFORE ANY SUBSURFACE WORK IS CONDUCTED.
  - 4) ELEVATIONS ARE BASED ON NAVD 88 (2012) AND REFERENCED TO THE TOP STEM BENCHMARK FOUND AT THE NORTHWEST QUADRANT OF 10TH AVE AND CLERMONT STREET, ELEV. = 1483.90' SEE BENCHMARK TABLE.
  - 5) THE FIELD WORK WAS COMPLETED ON APRIL 5TH, 2023.
  - 6) THE MANHOLE LYING IN CLERMONT STREET AS SHOWN APPEARS TO BE AN ABANDONED STORM WATER STRUCTURE THAT MAY HAVE FLOWED SOUTH INTO SPRING BROOK AT THE BRIDGE. THERE IS AN ENCLOSED 8" CAST IRON PIPE RUNNING IN AN EAST-WEST DIRECTION THROUGH THE MANHOLE BUT WE ALONG WITH THE CITY OF ANTIGO ARE NOT ABLE TO DETERMINE ITS USE AS THIS STRUCTURE DOES NOT APPEAR IN ANY AS-BUILT PLANS PER THE CITY OF ANTIGO ENGINEERING OFFICE.

**LEGEND**

- - FOUND 1" O.D. IRON PIPE
- - FOUND 1-1/4" O.D. IRON PIPE
- - FOUND 1-1/2" O.D. IRON PIPE
- - FOUND 2" O.D. IRON PIPE
- - SET 1-1/4" O.D. x 24" IRON PIPE WEIGHING 1.68 LBS/LIN. FT.
- ▲ - BENCHMARK
- ▲ - CONTROL POINT
- ⊙ - STORM SEWER MANHOLE
- ⊙ - SANITARY SEWER MANHOLE
- ⊙ - UTILITY MANHOLE
- ⊙ - STORM WATER CURB INLET
- ⊙ - UTILITY POLE
- - GUY WIRE
- ⊙ - COMMUNICATIONS VAULT
- ⊙ - TELEPHONE PEDESTAL
- ⊙ - SIGN
- ⊙ - UTILITY METER
- ⊙ - WATER VALVE
- ⊙ - HYDRANT
- ⊙ - MONITORING WELL
- 1470 — - CONTOUR 1' INTERVAL
- 1475 — - CONTOUR 5' INTERVAL
- 1480.6 ● - SPOT GRADE
- — - TREE LINE
- — - CHAIN LINK FENCE
- — - UNDERGROUND ELECTRIC
- — - UNDERGROUND TELEPHONE
- — - UNDERGROUND FIBER OPTIC
- — - UNDERGROUND GAS LINE
- — - OVERHEAD UTILITIES
- — - UNDERGROUND WATER
- — - STORM SEWER
- — - SANITARY SEWER
- — - CONCRETE
- — - GRAVEL
- - - TOPOGRAPHIC SURVEY LIMITS



**⊙ BENCHMARK TABLE**

| POINT # | DESCRIPTION                   | ELEVATION |
|---------|-------------------------------|-----------|
| 101     | 60D SPIKE SET IN PPOL 66-GG51 | 1482.97'  |
| 102     | 60D SPIKE SET IN PPOL 66NN51  | 1480.95'  |
| 103     | TOP NUT OF HYDRANT            | 1483.90'  |

**▲ CONTROL POINT TABLE**

| POINT # | NORTHING   | EASTING    | DESCRIPTION    |
|---------|------------|------------|----------------|
| 1       | 337974.189 | 619711.698 | CP 60D SET     |
| 11      | 337677.391 | 619693.996 | MAG NAIL FOUND |

SHEET  
**2 OF 2**

TOPOGRAPHIC AND BOUNDARY SURVEY FOR  
RAMBOLL AMERICAS ENGINEERING  
SOLUTIONS, INC.,  
118 CLERMONT ST, ANTIGO, WI

REVISIONS: APRIL 5, 2023  
SURVEYED BY: SMH  
DRAWN BY: SMH  
CHECKED BY: NJW  
APPROVED BY:  
DATE: MAY 23, 2022

**RIVERSIDE LAND SURVEYING LLC**  
5310 WILLOW STREET, WESTON, WI 54476 PH 715-241-7500 - FAX 715-355-6894  
email - mail@riversidelandsurveying.com

PROJECT No.  
**3832**

RECORD # 30608  
LANGLADE COUNTY SURVEYORS OFFICE  
DATE FILED: 5/10/23  
D.T.