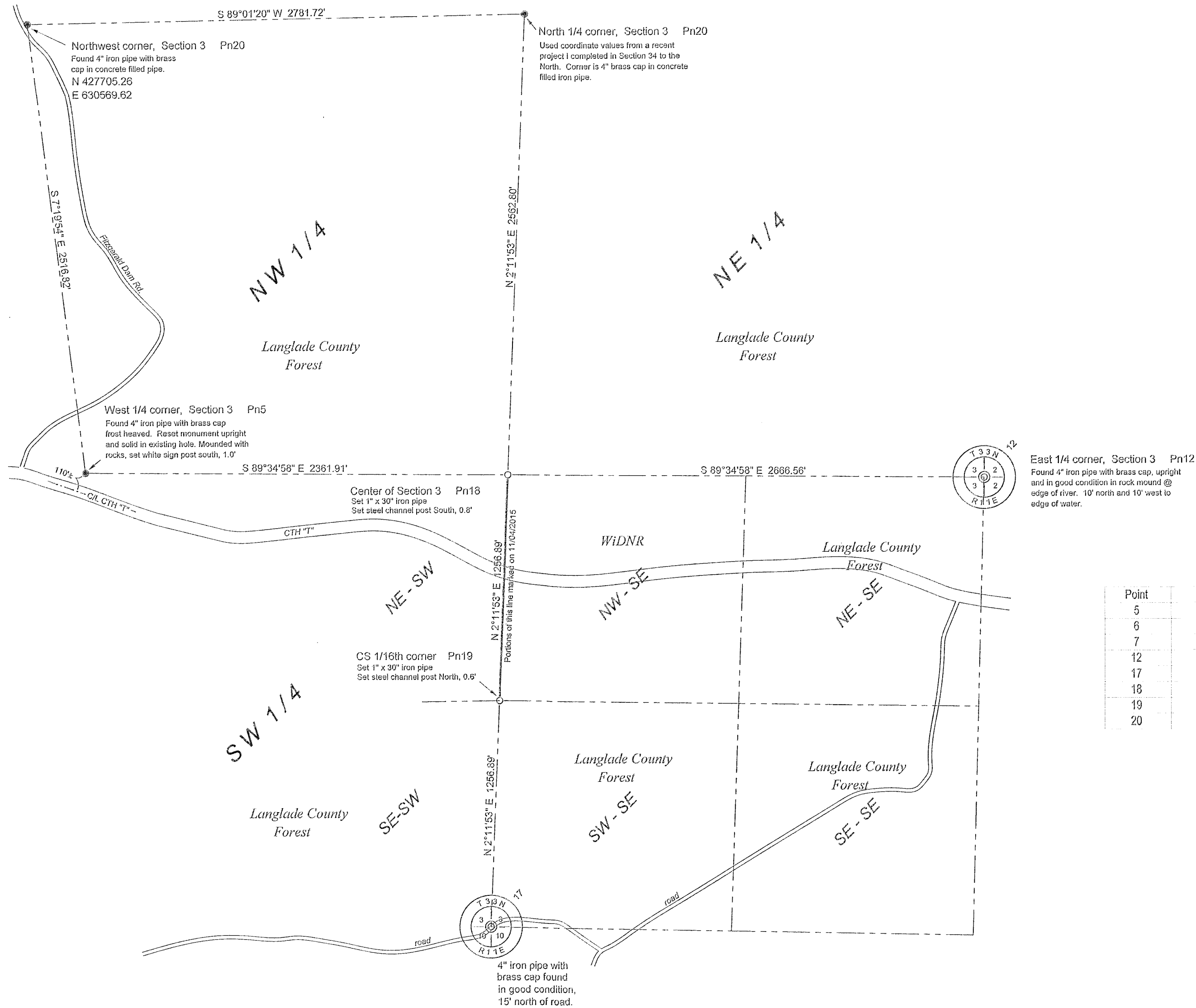


# Section 3, Township 33 North, Range 11 East

A survey of the East line of the  
Northeast Quarter of the Southwest Quarter.



Point	Northing	Easting	Description
5	425209.013	630890.798	IP BC FND4XRTK:11042015
6	425119.816	630811.472	CL PAVT
7	425078.079	630930.900	CL PAVT
12	425172.408	635919.130	IP BC FND4XRTK:11042015
17	422679.886	633156.227	IP BC FND4XRTK:11042015
18	425191.819	633252.844	CTR S3:11042015
19	423935.851	633204.435	CS16THX:11042015
20	427752.730	633350.940	N1/4X RTK

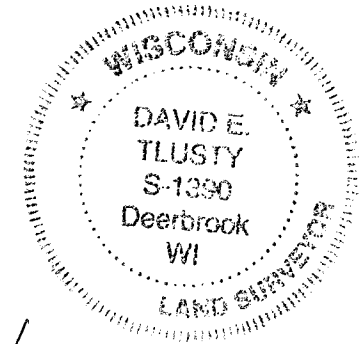
Coordinates shown are Langlade County Coordinates, NAD(83)2011 datum.  
Bearings shown are Langlade County Coordinate System grid bearings.  
Add (clockwise) 2° to the bearings shown to get approximate magnetic bearings.

- 1" ID x 30" iron pipe set. Marked with steel sign post.
- Monument found as noted
- boundary line flagged and painted blue, Nov. 2015

I, David E. Tlusty, Langlade County Surveyor, do hereby certify that by the direction of Erik Rantala, Langlade County Forest Administrator, I have made a survey of part of Section 3, T.33 N., R.11 E., Town of Upham, as shown hereon. I further certify that this map is a true and correct representation of said survey, and that this survey is correct to the best of my knowledge and belief.

November 4, 2015

*David E. Tlusty* 5/22/19  
David E. Tlusty, S-1390  
Langlade County Surveyor



RECORD # 30605  
LANGLADE COUNTY SURVEYORS OFFICE  
DATE FILED: 5/22/19 BY: D. Tlusty

REVISIONS	
NO.	DATE
1	
	DESCRIPTION
	BY

LANGLADE COUNTY

LAND RECORDS & REGULATIONS DEPARTMENT

THIS DOCUMENT WAS CREATED ON LANGLADE COUNTY COMPUTER EQUIPMENT THAT WAS PURCHASED WITH THE ASSISTANCE OF A GRANT RECEIVED FROM THE WISCONSIN LAND INFORMATION BOARD.

SCALE:  
1" = 500'

DRAWN BY:  
D. TLUSTY

Carlson prj:  
33311  
Fb 27-1

DATE:  
11/2015

TOWN OF:  
UPHAM

TOWN CODE:

LOCATION:

SECTION: 3

TOWNSHIP: 33

RANGE: 11

DWG. #:  
.033311.DCD