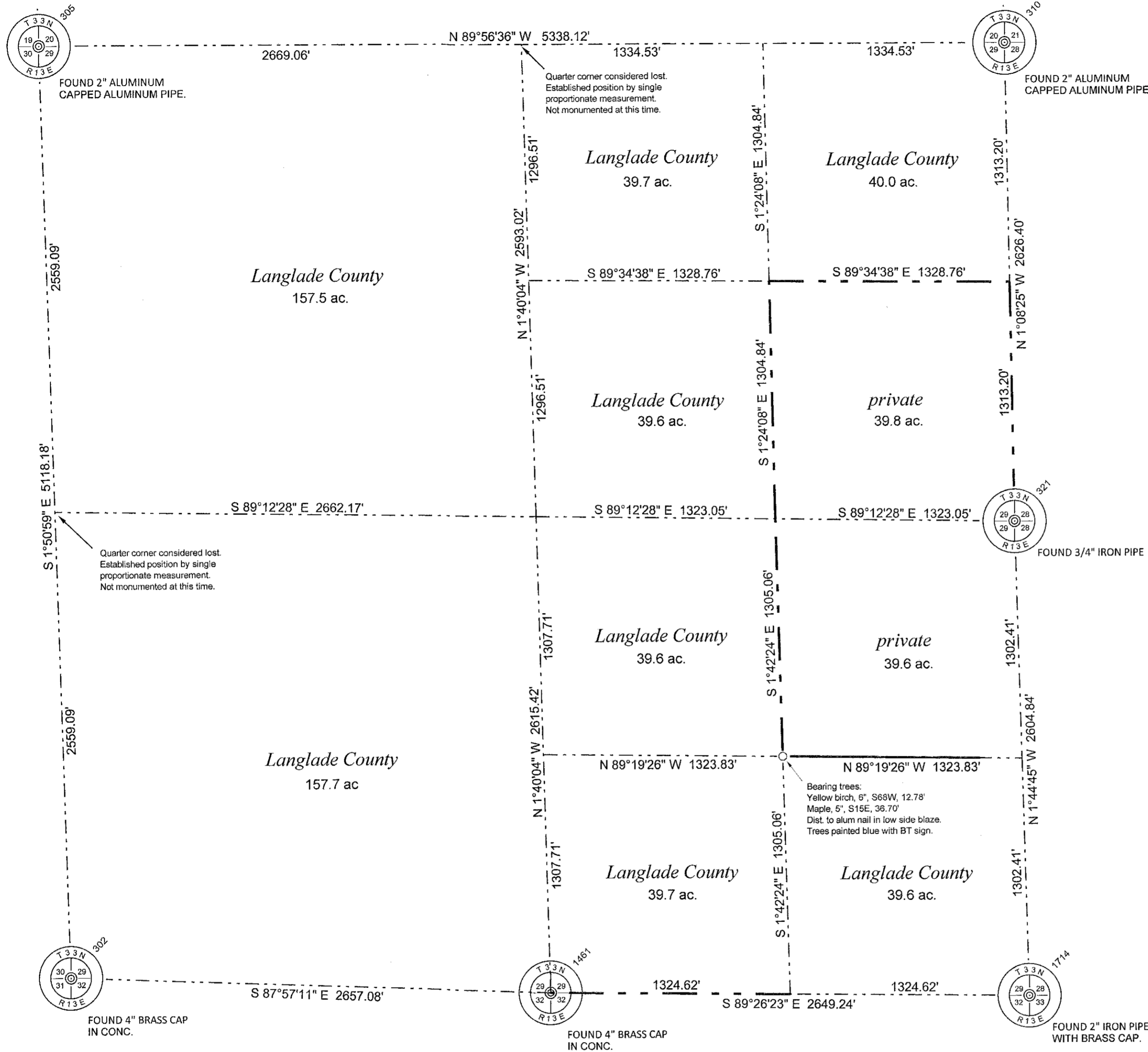


Section 29, Township 33 North, Range 13 East

LANGLADE COUNTY COORDINATE SYSTEM GRID BEARINGS SHOWN



Quarter corner considered lost. Established position by single proportionate measurement. Not monumented at this time.

Quarter corner considered lost. Established position by single proportionate measurement. Not monumented at this time.

Bearing trees:
Yellow birch, 9", S68W, 12.78'
Maple, 5", S15E, 38.70'
Dist. to alum nail in low side blaze.
Trees painted blue with BT sign.

LANGLADE COUNTY COORDINATE SYSTEM NAD83(2011)

PNO	N	E	DESC
302	400853.89	683849.87	SC 4INCONC BCAP
305	405969.40	683684.66	SC ALUM MON NWXS29
310	405964.13	689022.77	SC 4XRTKALUMMON FND
321	403338.25	689075.04	QC 3-4IN IP FND
1461	400760.53	686505.30	3x rt ave 4"bc 1/4cor
1714	400734.63	689154.40	2IN IP BC FND2XRTK

The above listed coordinates are derived from multiple GNSS observations.

I, David E. Tlusty, Langlade County Surveyor, do hereby certify that, by the direction of the Langlade County Forestry Department, I have made a survey of part of Section 29, T.33 N., R.13 E., Town of Langlade, as shown hereon. I further certify that this map is a true and correct representation of said survey, and that this survey is correct to the best of my knowledge and belief. Corner restoration forms are on file for all monumented corners shown.

Oct. - Nov. 2014

David E. Tlusty
David E. Tlusty, S-1390
Langlade County Surveyor

Revised 11/12/18 DT.

RECORD # 30603
LANGLADE COUNTY SURVEYORS OFFICE
DATE FILED: 11/12/18 BY: D. Tlusty

THIS DOCUMENT WAS CREATED ON LANGLADE COUNTY COMPUTER EQUIPMENT THAT WAS PURCHASED WITH THE ASSISTANCE OF A GRANT RECEIVED FROM THE WISCONSIN LAND INFORMATION BOARD.

LANGLADE COUNTY
LAND RECORDS & REGULATIONS DEPARTMENT

SCALE:
1" = 500'

DRAWN BY:
D. TLUSTY

REF. FILE:
pt file "langlade"

DATE:
Nov. 2014

TOWN OF:
Langlade

TOWN CODE:

LOCATION:

SECTION: 29

TOWNSHIP: 33

RANGE: 13

DWG. #:

..293313

REVISIONS

NO. DATE DESCRIPTION BY