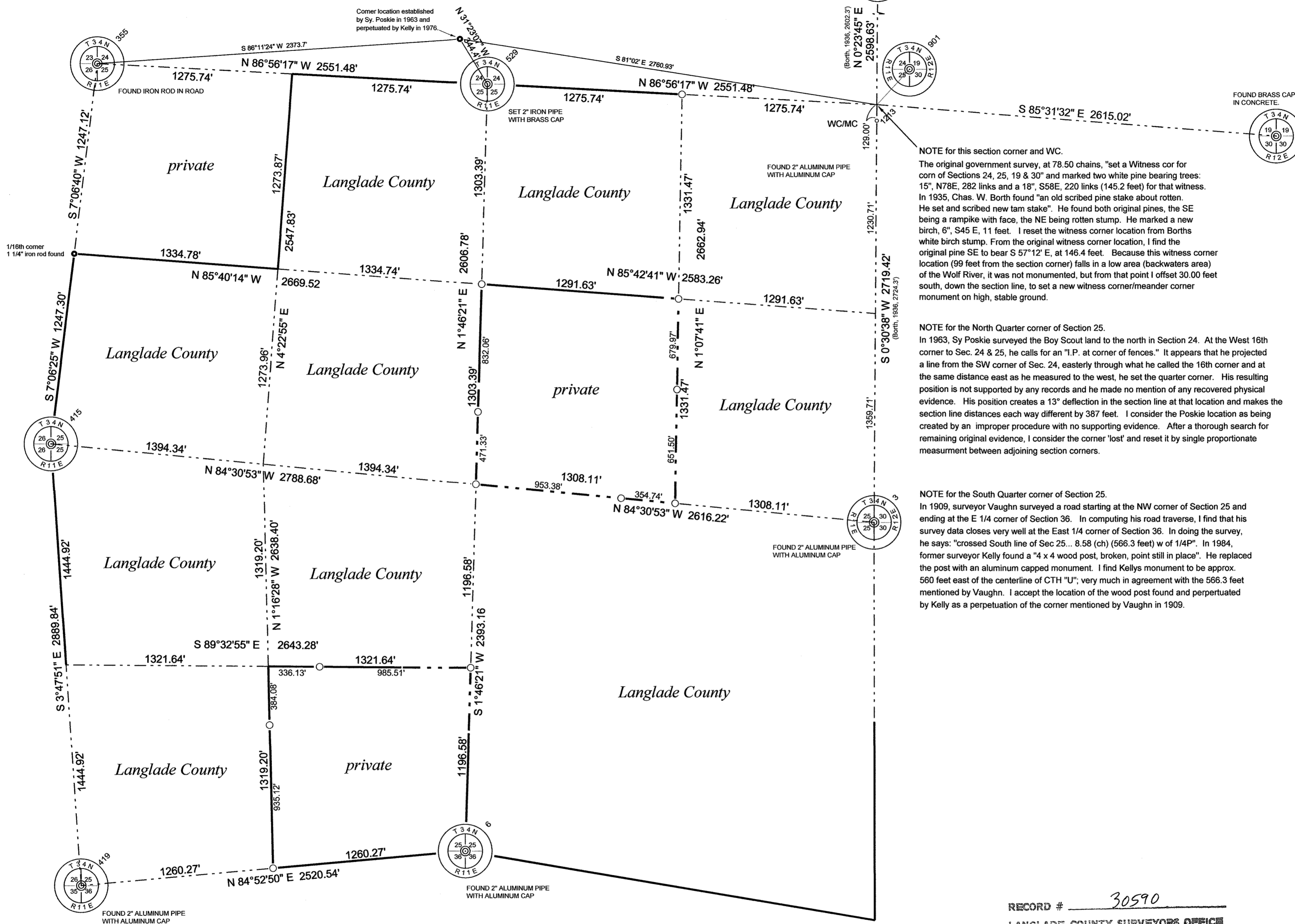


Section 25, Township 34 North, Range 11 East

LANGLADE COUNTY COORDINATE SYSTEM GRID BEARINGS SHOWN



NOTE for this section corner and WC.
The original government survey, at 78.50 chains, "set a Witness cor for corn of Sections 24, 25, 19 & 30" and marked two white pine bearing trees: 15", N78E, 282 links and a 18", S58E, 220 links (145.2 feet) for that witness. In 1935, Chas. W. Borth found "an old scribed pine stake about rotten. He set and scribed new tam stake". He found both original pines, the SE being a rampike with face, the NE being rotten stump. He marked a new birch, 6", S45 E, 11 feet. I reset the witness corner location from Borths white birch stump. From the original witness corner location, I find the original pine SE to bear S 57°12' E, at 146.4 feet. Because this witness corner location (99 feet from the section corner) falls in a low area (backwaters area) of the Wolf River, it was not monumented, but from that point I offset 30.00 feet south, down the section line, to set a new witness corner/meander corner monument on high, stable ground.

NOTE for the North Quarter corner of Section 25.
In 1963, Sy Poskie surveyed the Boy Scout land to the north in Section 24. At the West 16th corner to Sec. 24 & 25, he calls for an "I.P. at corner of fences." It appears that he projected a line from the SW corner of Sec. 24, easterly through what he called the 16th corner and at the same distance east as he measured to the west, he set the quarter corner. His resulting position is not supported by any records and he made no mention of any recovered physical evidence. His position creates a 13" deflection in the section line at that location and makes the section line distances each way different by 387 feet. I consider the Poskie location as being created by an improper procedure with no supporting evidence. After a thorough search for remaining original evidence, I consider the corner 'lost' and reset it by single proportionate measurement between adjoining section corners.

NOTE for the South Quarter corner of Section 25.
In 1909, surveyor Vaughn surveyed a road starting at the NW corner of Section 25 and ending at the E 1/4 corner of Section 36. In computing his road traverse, I find that his survey data closes very well at the East 1/4 corner of Section 36. In doing the survey, he says: "crossed South line of Sec 25... 8.58 (ch) (566.3 feet) w of 1/4P". In 1984, former surveyor Kelly found a "4 x 4 wood post, broken, point still in place". He replaced the post with an aluminum capped monument. I find Kellys monument to be approx. 560 feet east of the centerline of CTH "U"; very much in agreement with the 566.3 feet mentioned by Vaughn. I accept the location of the wood post found and perpetuated by Kelly as a perpetuation of the corner mentioned by Vaughn in 1909.

THIS DOCUMENT WAS CREATED ON LANGLADE COUNTY COMPUTER EQUIPMENT THAT WAS PURCHASED WITH THE ASSISTANCE OF A GRANT RECEIVED FROM THE WISCONSIN LAND INFORMATION BOARD.

LANGLADE COUNTY
LAND RECORDS & REGULATIONS DEPARTMENT

SCALE:
1" = 500'

DRAWN BY:
D. TLUSTY

REF. FILE:

DATE:
April 2012

TOWN OF:
ELCHO

TOWN CODE:

LOCATION:

SECTION: 25

TOWNSHIP: 34

RANGE: 11

DWG. #:
..253411

NO.	DATE	DESCRIPTION	BY

The coordinates on the NW corner, W1/4 corner, SW corner and the NE WC were determined by direct RTK GPS sessions on the corner monuments. The coordinates for the other PLSS corners shown were determined by conventional traverse from RTK GPS control pairs in the vicinity of the corner.

LEGEND

- 1" x 24" iron pipe set flush and marked with steel channel post with Forest Boundary sign
- County Forest Boundary
- - - County Forest Boundary surveyed and marked

LANGLADE COUNTY COORDINATE SYSTEM NAD83(91)

PNO	N	E	DESC
3	435007.29	646803.18	E1/4x s25 2" alum mon fnd
6	432865.36	644124.93	S1/4x s25 2" alum mon fnd
355	437999.18	641731.75	REBAR SW x S24
400	440325.17	646845.36	e1/4x s24 bc in conc
415	435523.94	641423.05	W1/4x s251.25" ir fnd
418	436761.65	641577.37	1/16thx IRON PIPE FND
419	432640.44	641614.44	SWx S25 Alum mon fnd
529	437862.89	644279.58	1/4x sprm 2" ip w/bc set
530	435257.37	644198.95	ctr sec 1" ip set
901	437726.61	646827.41	sec cor in river
1213	437597.61	646826.26	WC 1" ip set

I, David E. Tlusty, Langlade County Surveyor, do hereby certify that, by the direction of the Langlade County Forestry Department, I have made a survey of part of Section 25, T.34 N., R.11 E., Town of Elcho, as shown hereon. I further certify that this map is a true and correct representation of said survey, and that this survey is correct to the best of my knowledge and belief. Corner restoration forms are on file for all monumented corners shown.

April, 2012

David E. Tlusty, S-1390
Langlade County Surveyor

RECORD # 30590
LANGLADE COUNTY SURVEYORS OFFICE
DATE FILED: 6/5/12 BY: D. TLUSTY

