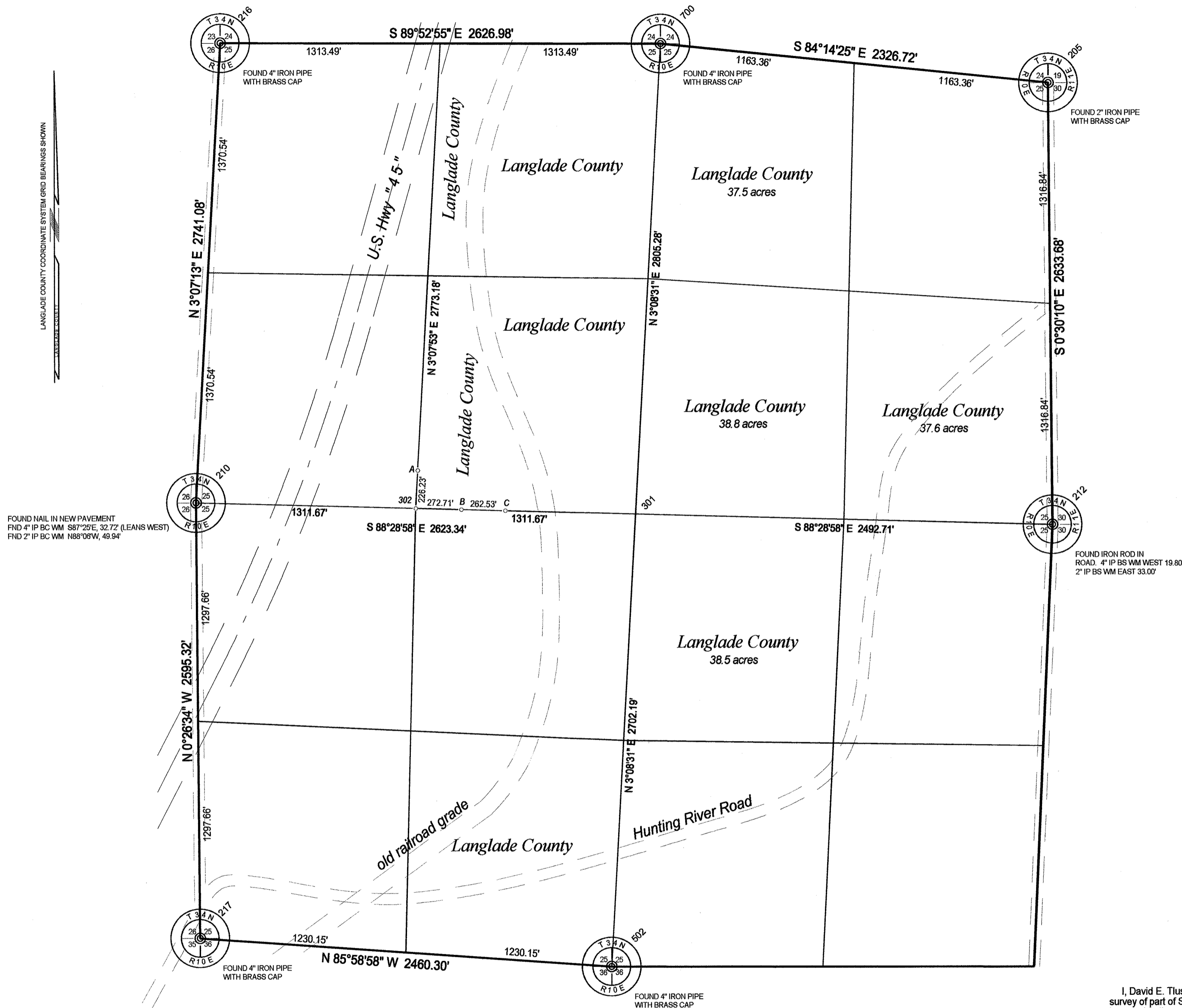


Section 25, Township 34 North, Range 10 East



FOUND NAIL IN NEW PAVEMENT
 FND 4" IP BC WM S87°25'E, 32.72' (LEANS WEST)
 FND 2" IP BC WM N88°05'W, 48.84'

- LEGEND TO MARKERS SET 10/10/06
- 301 Center West 1/16th corner, 1" x 30" iron pipe set & sign post, NE, 0.5'
 - A 3/4" x 30" re-bar set. Sign post, North, 1.0'
 - B Sign post set
 - C 3/4" x 30" re-bar set. Sign post, East, 1.0'

The coordinate values for the N1/4 corner have been obtained by RTK GPS observation directly on the corner monument. The coordinates for the other section and quarter corners shown have been obtained by traversing from RTK GPS points set near each corner.

Coordinates shown are Langlade County Coordinates.
 Bearings shown are Langlade County Coordinate System grid bearings.
 The computed convergence angle at the center of Section 25 is -0°06'33".
 Geodetic azimuth = Grid azimuth + convergence angle.

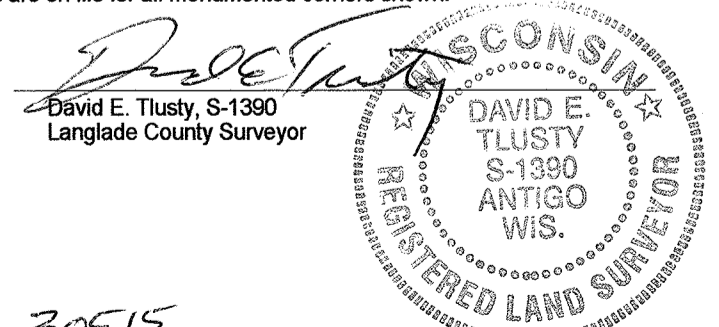
Roads and other features shown were scaled from aerial photography and those locations were not verified in the field.

LANGLADE COUNTY COORDINATE SYSTEM

PNO	N	E	DESC
205	438050.9917	613953.1247	NEX SEC25 2" IP BCAP FND
210	435552.8947	608861.9748	NA FND IN RD 1/4X S25
212	435417.4261	613976.2357	E1/4X S25 FROM W/M'S
216	438289.9088	609011.1831	NWX S25 MON FND
217	432957.6586	608882.0330	SWX SEC 25 4" IP BC
301	435483.4310	611484.3966	calc ctr s25 not monumented
502	432785.2995	611336.2865	S1/4x S25 mon fnd trav.tb16-144
700	438284.4950	611638.1570	N1/4 COR. RTK ON MON 4" IP WBC

I, David E. Tlusty, Langlade County Surveyor, do hereby certify that I have made a survey of part of Section 25, T.34 N., R.10E., Town of Elcho, as shown hereon. I further certify that this map is a true and correct representation of said survey, and that this survey is correct to the best of my knowledge and belief. Corner restoration forms are on file for all monumented corners shown.

October 11, 2006



Minor Revisions
2/17/07 D.T.

RECORD # 30515

LANGLADE COUNTY SURVEYORS OFFICE

DATE FILED: 2/17/07 BY: [Signature]

THIS DOCUMENT WAS CREATED ON LANGLADE COUNTY COMPUTER EQUIPMENT THAT WAS PURCHASED WITH THE ASSISTANCE OF A GRANT RECEIVED FROM THE WISCONSIN LAND INFORMATION BOARD.

LANGLADE COUNTY LAND RECORDS & REGULATIONS DEPARTMENT

SCALE:
1" = 500'

DRAWN BY:
D. TLUSTY

REF. FILE:

DATE:
05/05/2006

TOWN OF:
ELCHO

TOWN CODE:

LOCATION:

SECTION: 25

TOWNSHIP: 34

RANGE: 10

DWG. #:
..253410

REVISIONS	
NO.	DESCRIPTION