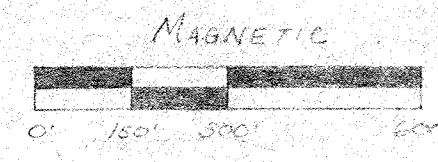


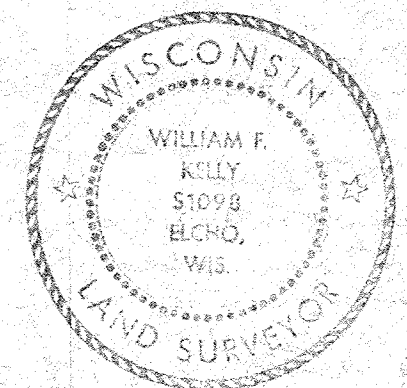
# MAP OF SURVEY FOR KENNETH SCHMIEGE

LOCATED IN THE SE 1/4, SE 1/4, SECT 24 & NE 1/4, NE 1/4, SECT. 25,  
T32N, R11E, TOWN OF ~~LANGLADE~~ LANGLADE COUNTY, WISCONSIN



SCALE: 1"=300'

- LEGEND:
- IRON PIPE, SET
  - ▲ CAPPED NAIL, SET
  - RR. MARK, SET



William F. Kelly 5/10/84  
RECORD # 30501

LANGLADE COUNTY SURVEYORS OFFICE

DATE FILED: 6-16-88 AKM

**BUILDERS SERVICE ENGINEERING DIVISION**

KENNETH SCHMIEGE

MAP OF SURVEY

SECTS 24 & 25, T32N, R11E

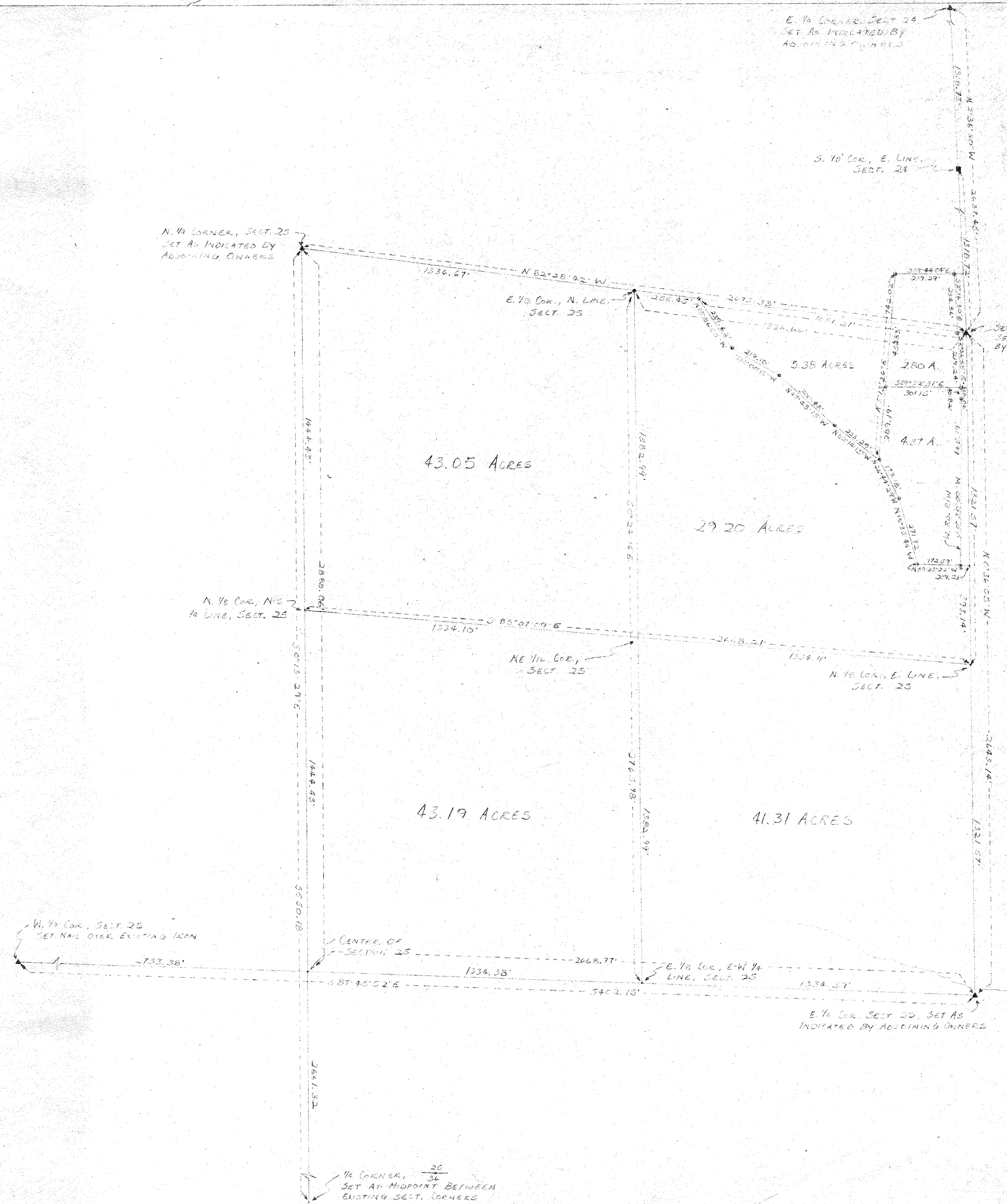
DRAWN BY: LISA MEYER

SCALE 1"=300'

DATE MAY 9, 1984

SHEET 1 OF 1

DWG. NO: 1266



1/4 CORNER, 25/36  
SET AT MIDDPOINT BETWEEN  
EXISTING SECT. CORNERS