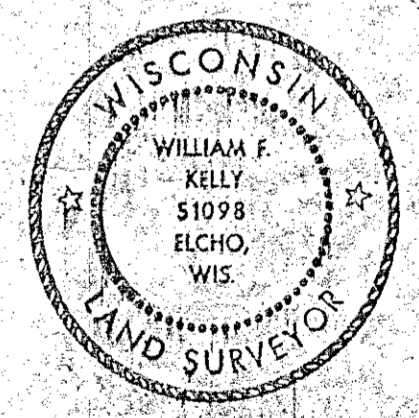
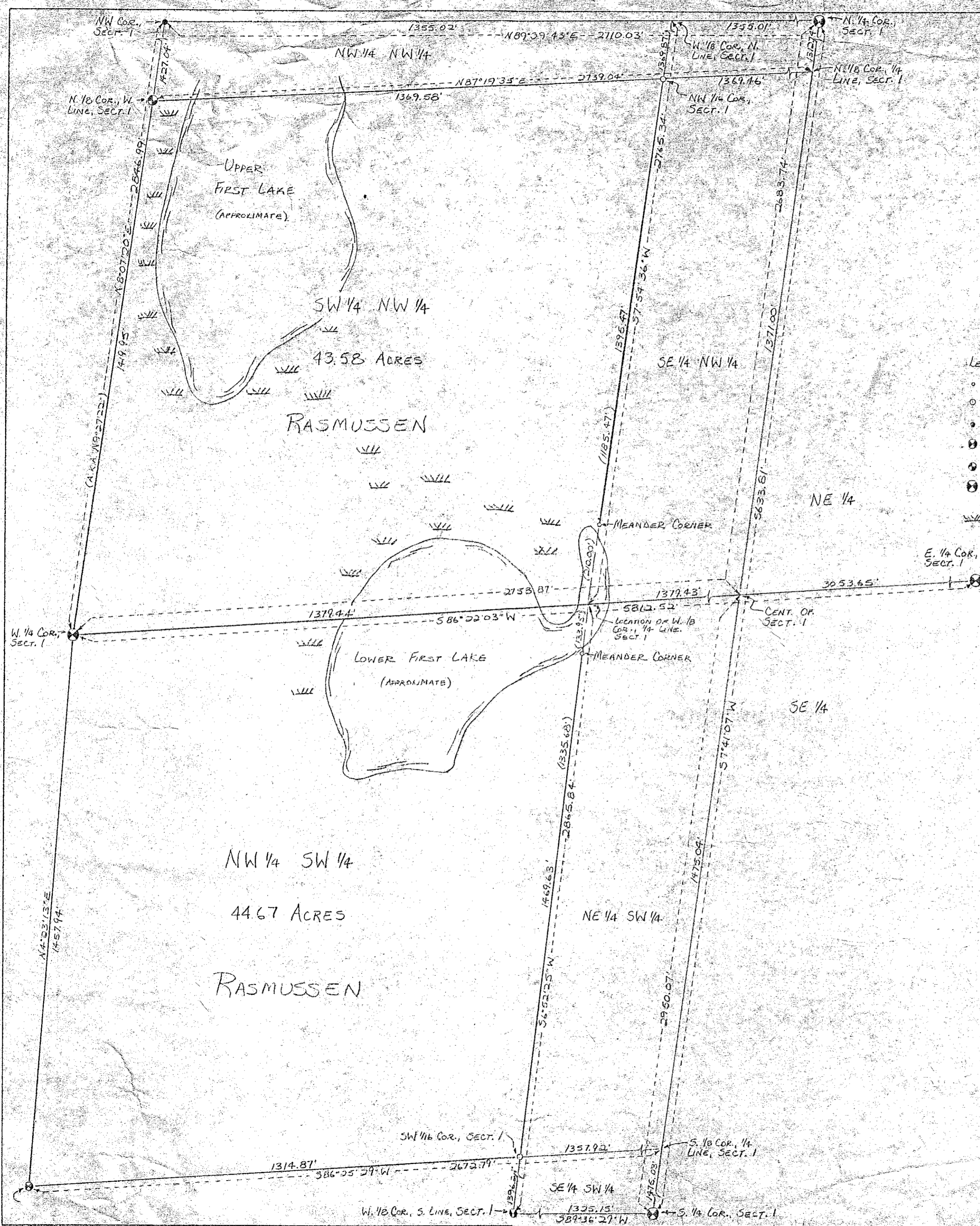
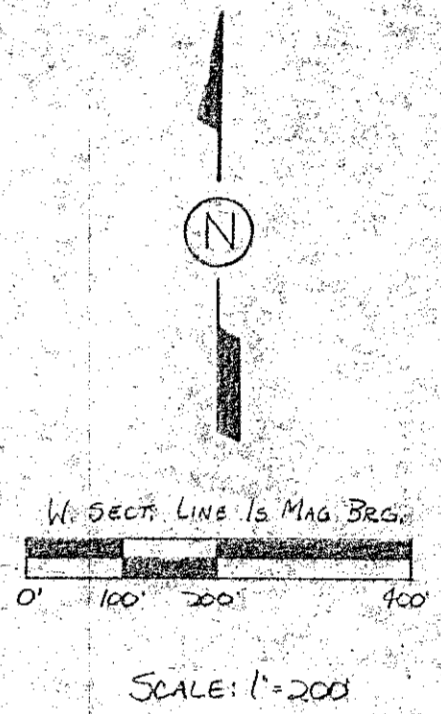


MAP OF SURVEY FOR BRUCE RASMUSSEN

BEING THE SW 1/4 NW 1/4 & NW 1/4 SW 1/4, SECTION 1, T34N, R10E,
TOWN OF ELCHO, LANGLADE COUNTY, WISCONSIN

- LEGEND:
- 1" x 30" IRON PIPE, SET, MINIMUM WT. 113#/LF
 - 2" x 30" IRON PIPE, SET, MINIMUM WT. 365#/LF
 - 1/4" IRON PIPE W/ WIT. MON., FOUND IN PLACE
 - ⊙ 3" ALUM. MONUMENT, SET FROM OUR 1984 LINE SURVEY (DWG. NO. 134B)
 - ⊙ 1 1/2" BRASS CAP MONUMENT, FOUND IN PLACE
 - ⊙ 4" BRASS CAP MONUMENT, FOUND IN PLACE
 - W W W W WETLANDS FROM TARP MAPS



William F. Kelly
6-22-87

BUILDERS SERVICE ENGINEERING DIVISION	
SURVEY MAP	
FOR	
BRUCE RASMUSSEN	
DRAWN BY: LISA REYNOLDS	
SCALE 1" = 200'	DATE JUNE 4, 1987
SHEET 1 OF 1	DWG. NO: 1809

RECORD # 30388
LANGLADE COUNTY SURVEYORS OFFICE
DATE FILED: 6/9/87 BY: DT