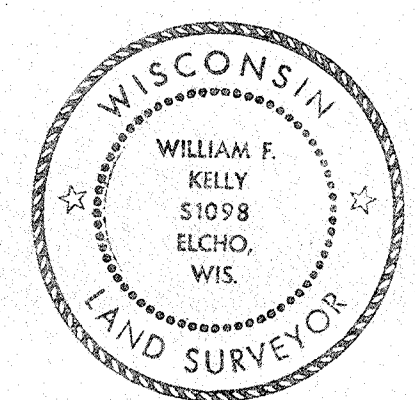
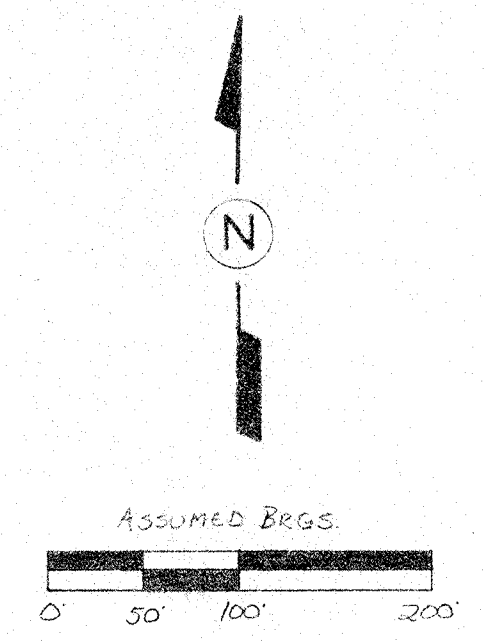


MAP OF SURVEY
FOR JOS. SAGAN

BEING THE NE 1/4 NE 1/4, SECT. 36, T33N, R10E
TOWN OF UPHAM, LANGLADE CO., WISCONSIN

JOSEPH V SAGAN
NE 1/4 NE 1/4
411.4 ACRES

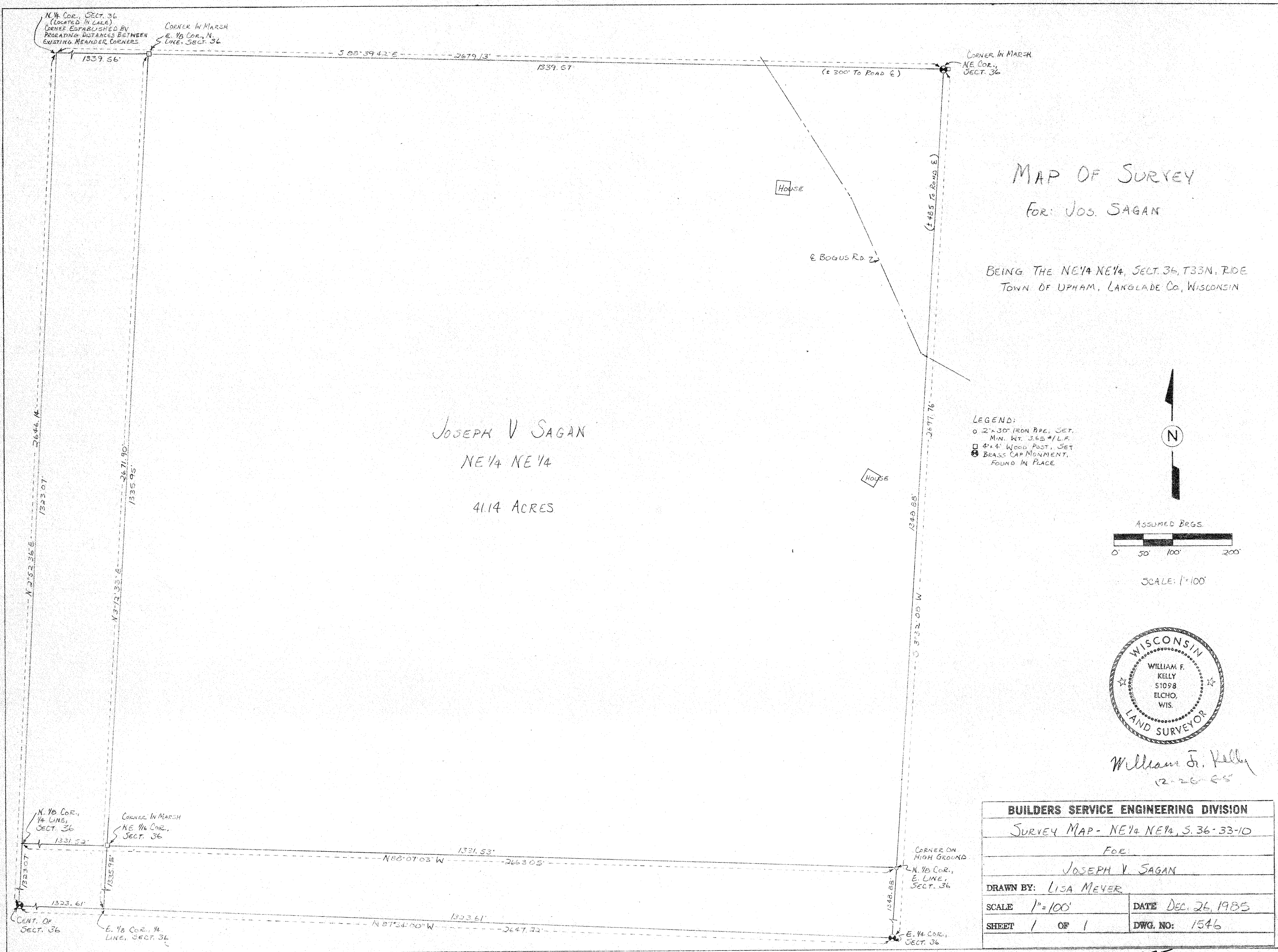
- LEGEND:
- 2 x 30 IRON PIPE, SET, MIN. WT. 3.65 #/L.F.
 - 4 x 4 WOOD POST, SET
 - ⊗ BRASS CAP MONUMENT, FOUND IN PLACE



William F. Kelly
12-26-85

BUILDERS SERVICE ENGINEERING DIVISION	
SURVEY MAP - NE 1/4 NE 1/4, S. 36-33-10	
FOR:	
JOSEPH V SAGAN	
DRAWN BY: LISA MEYER	
SCALE 1"=100'	DATE DEC. 26, 1985
SHEET 1 OF 1	DWG. NO: 1546

RECORD # 30375 (EXTRA)
LANGLADE COUNTY SURVEYORS OFFICE
DATE FILED: BY: 101



RECORD # 30375
 LANGLADE COUNTY SURVEYORS OFFICE
 DATE FILED: 6/9/93 BY: DT 101