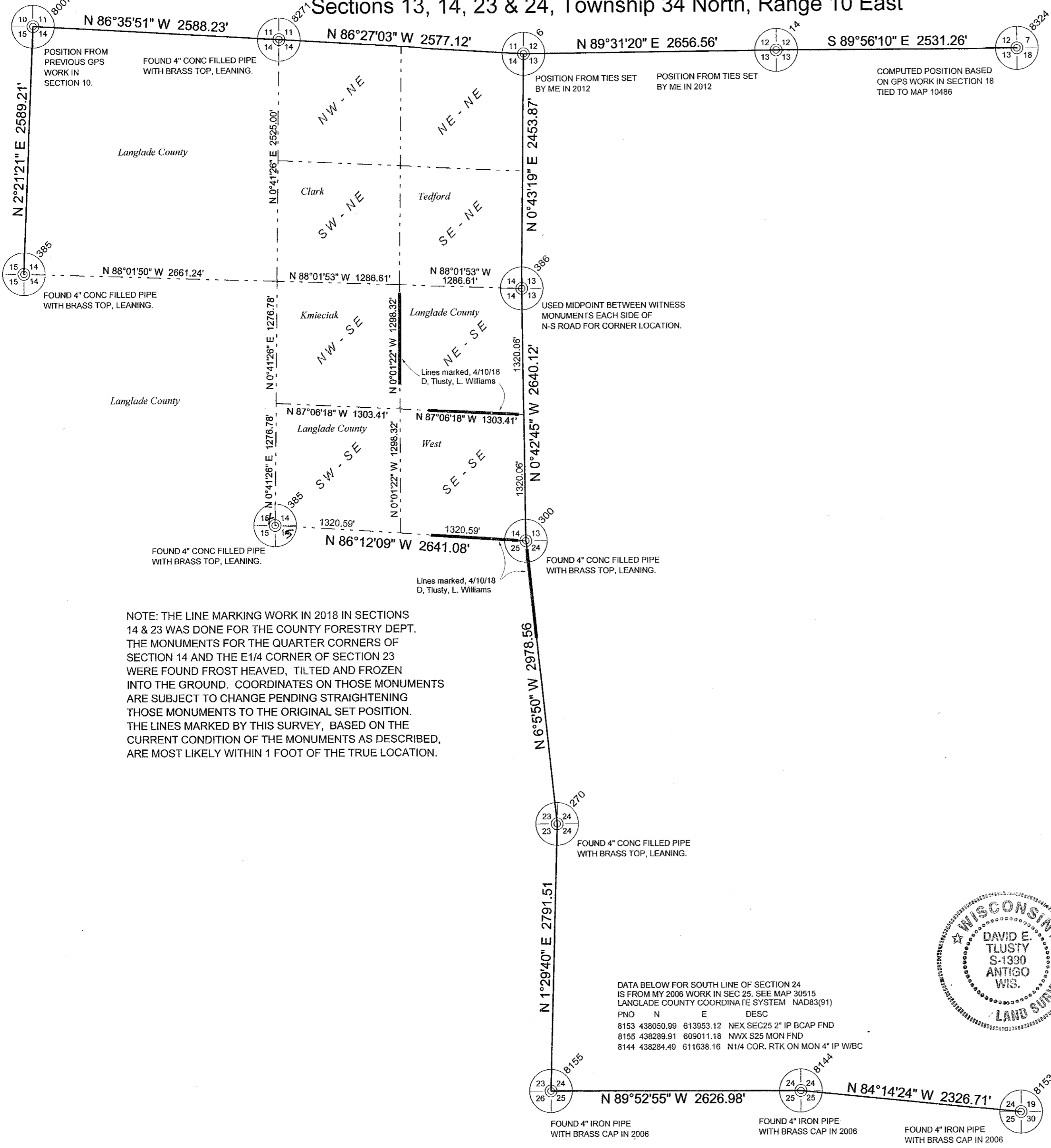


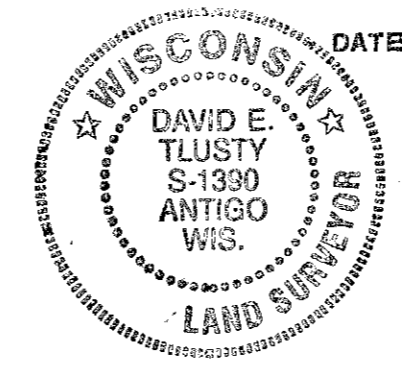
Sections 13, 14, 23 & 24, Township 34 North, Range 10 East



NOTE: THE LINE MARKING WORK IN 2018 IN SECTIONS 14 & 23 WAS DONE FOR THE COUNTY FORESTRY DEPT. THE MONUMENTS FOR THE QUARTER CORNERS OF SECTION 14 AND THE E1/4 CORNER OF SECTION 23 WERE FOUND FROST HEAVED, TILTED AND FROZEN INTO THE GROUND. COORDINATES ON THOSE MONUMENTS ARE SUBJECT TO CHANGE PENDING STRAIGHTENING THOSE MONUMENTS TO THE ORIGINAL SET POSITION. THE LINES MARKED BY THIS SURVEY, BASED ON THE CURRENT CONDITION OF THE MONUMENTS AS DESCRIBED, ARE MOST LIKELY WITHIN 1 FOOT OF THE TRUE LOCATION.

DATA BELOW FOR SOUTH LINE OF SECTION 24 IS FROM MY 2006 WORK IN SEC 25. SEE MAP 30515 LANGLADE COUNTY COORDINATE SYSTEM NAD83(91)

PNO	N	E	DESC
8153	438050.99	613953.12	NEX SEC25 2" IP BCAP FND
8155	438289.91	609011.18	NWX S25 MON FND
8144	438284.49	611638.16	N1/4 COR. RTK ON MON 4" IP W/BC



LANGLADE COUNTY COORDINATES NAD83(2011)

6	449135.7	608765.6
270	441080.4	609083.9
300	444042.2	608767.5
316	444217.1	606132.3
385	446861.9	603503.4
8271	449295.3	606193.5

LEGEND
 ○ = 1" x 36" iron pipe set
 — boundary flagged and painted blue
 Ownership information taken from Langlade County GIS website and may not reflect recent ownership changes, if any.

RECORD # 30298
 LANGLADE COUNTY SURVEYORS OFFICE
 DATE FILED: 11/5/2020 BY: D. TLUSTY

I, David E. Tlusty, Langlade County Surveyor, do hereby certify that I have made a survey of the parts of Sections 14 & 23, T.34N., R.10E., Town of Elcho, as shown hereon, at the request of the Langlade County Forestry Department for logging purposes. I further certify that this map is a true and correct representation of said survey and that this survey is correct to the best of my knowledge and belief.

David E. Tlusty
 David E. Tlusty, S-1390
 Langlade County Surveyor
 May 18, 2018

REVISIONS	
NO.	DESCRIPTION
1	

THIS DOCUMENT WAS CREATED ON LANGLADE COUNTY COMPUTER EQUIPMENT THAT WAS PURCHASED WITH THE ASSISTANCE OF A GRANT RECEIVED FROM THE WISCONSIN LAND INFORMATION BOARD.

LANGLADE COUNTY
 LAND RECORDS & REGULATIONS DEPARTMENT

SCALE: 1" = 800'

DRAWN BY: D. TLUSTY

REF. FILE: FB 25

DATE: 2018

TOWN OF: Elcho

TOWN CODE:

LOCATION:

SECTION: 13,14,23,24

TOWNSHIP: 34

RANGE: 10

DWG. #:
 ..SURVEYS/T34N/13-243410