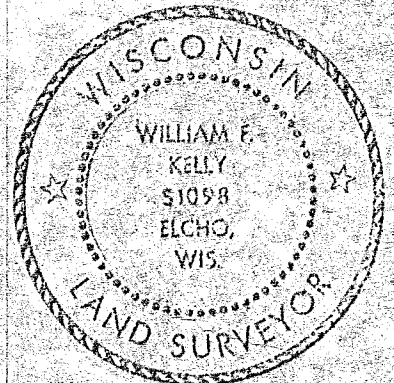
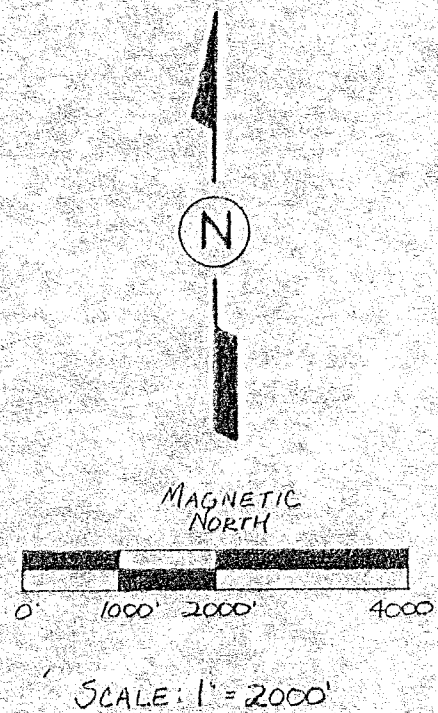
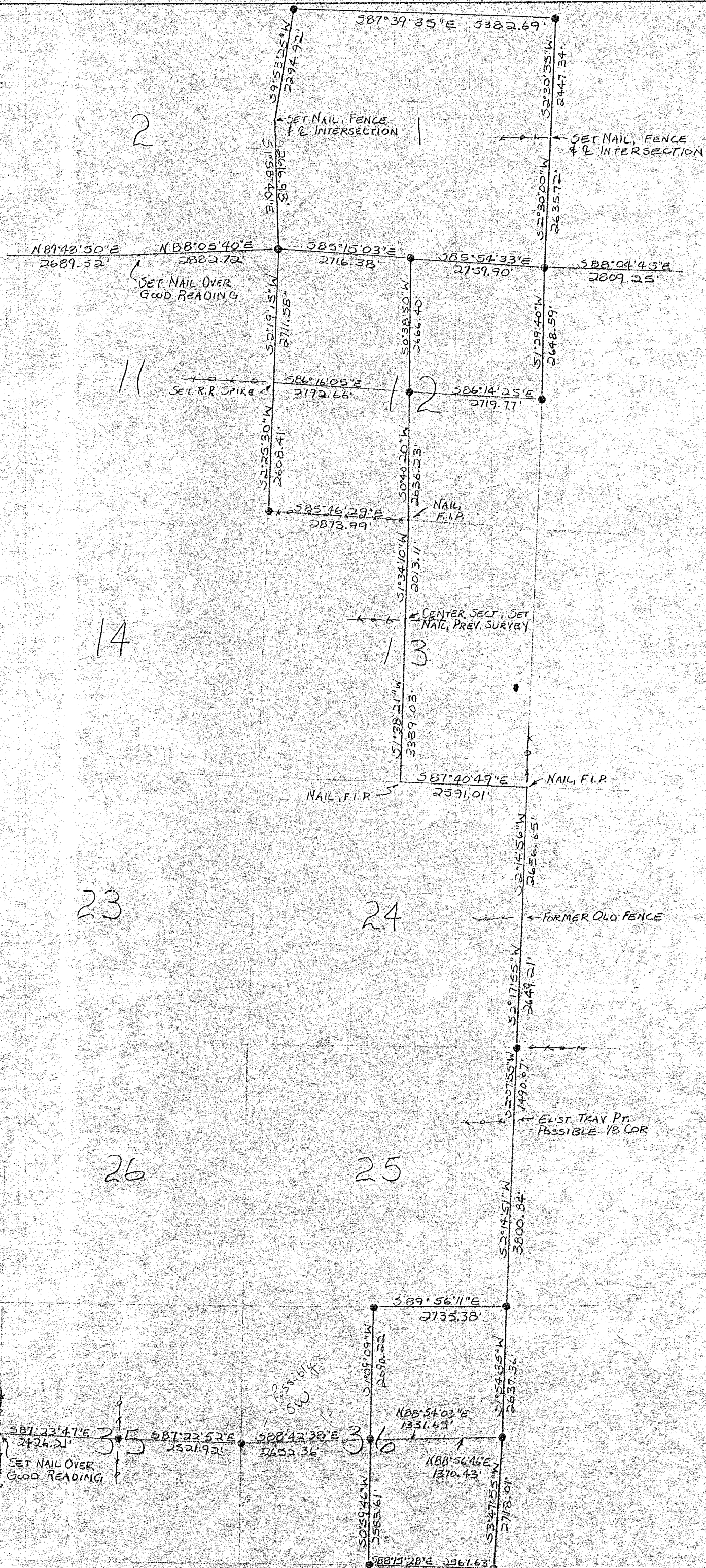


# TOWN OF ANTIGO T31N-R11E LANGLADE COUNTY, WISCONSIN

**LEGEND:**

- EXISTING MONUMENTED CORNER (SEE CORNER MONUMENTATION BOOK)



William F. Kelly  
1-30-87

BUILDERS SERVICE ENGINEERING DIVISION	
TOWN OF ANTIGO	
T31N-R11E	
CORNER INFORMATION	
DRAWN BY: LISA REYNOLDS	
SCALE 1" = 2000'	DATE JAN. 29, 1987
SHEET 1 OF 2	DWG. NO: 1752

RECORD # 30293  
LANGLADE COUNTY SURVEYORS OFFICE  
DATE FILED: 6/1/93 BY: DJ.

313