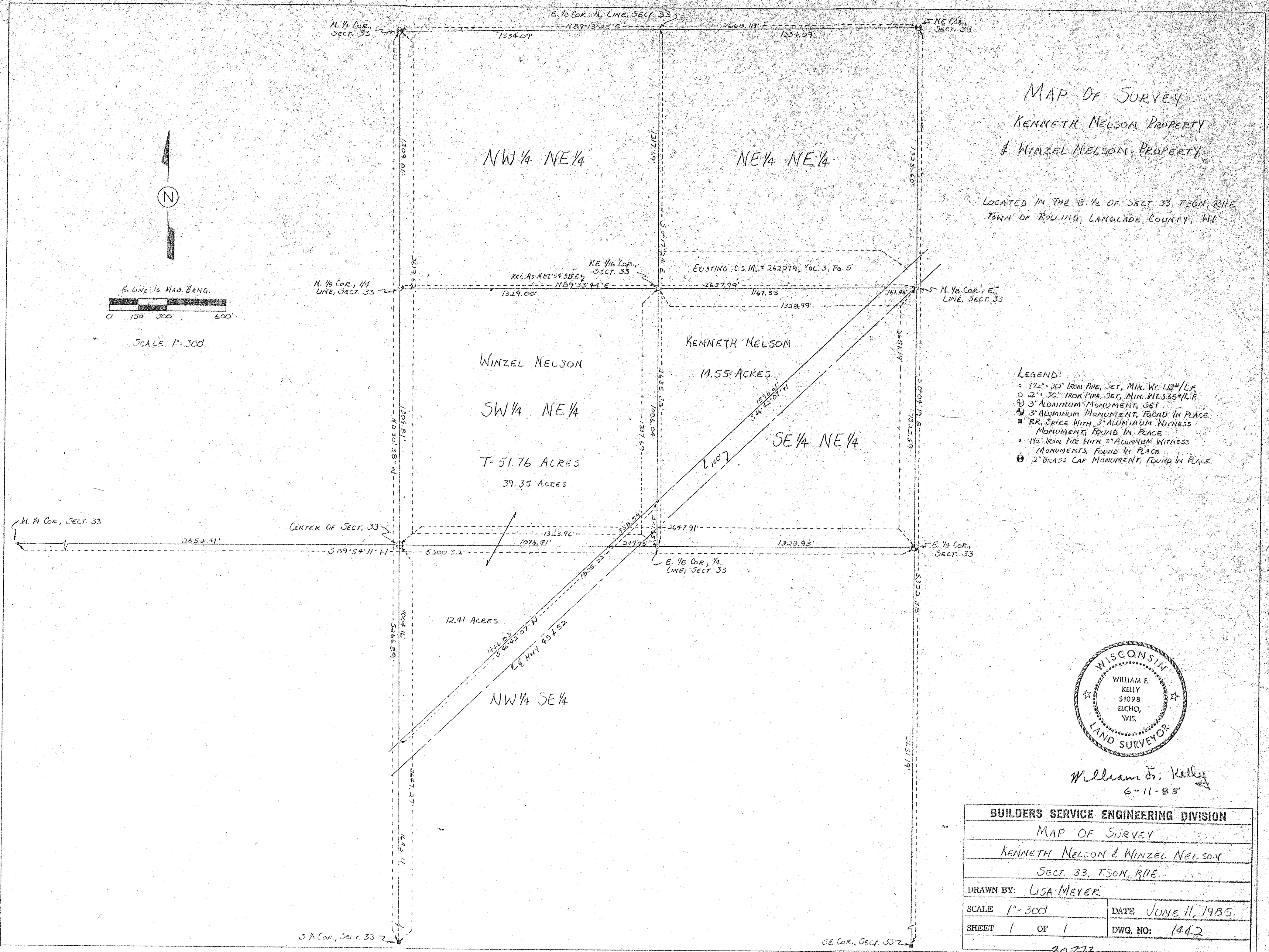
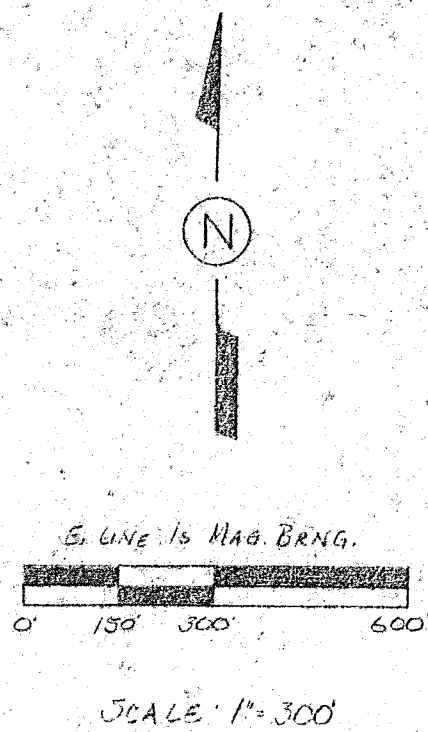
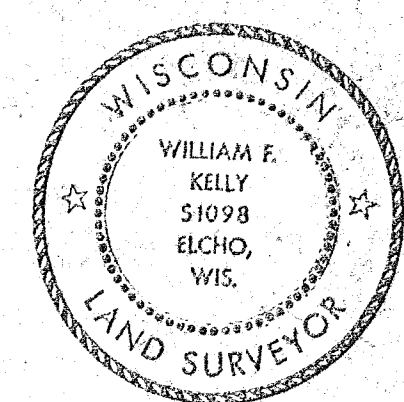


MAP OF SURVEY  
 KENNETH NELSON PROPERTY  
 & WINZEL NELSON PROPERTY  
 LOCATED IN THE E 1/2 OF SECT. 33, T30N, R11E  
 TOWN OF ROLLING, LANGLADE COUNTY, WI



- LEGEND:
- 1/2" x 30" IRON PIPE, SET, MIN. WT. 1.13#/LF.
  - 2" x 30" IRON PIPE, SET, MIN. WT. 3.65#/LF.
  - ⊕ 3" ALUMINUM MONUMENT, SET
  - ⊕ 3" ALUMINUM MONUMENT, FOUND IN PLACE
  - RR SPIKE WITH 3" ALUMINUM WITNESS MONUMENT, FOUND IN PLACE
  - 1/2" IRON PIPE WITH 3" ALUMINUM WITNESS MONUMENTS, FOUND IN PLACE
  - ⊙ 2" BRASS CAP MONUMENT, FOUND IN PLACE



William F. Kelly  
 6-11-85

BUILDERS SERVICE ENGINEERING DIVISION	
MAP OF SURVEY	
KENNETH NELSON & WINZEL NELSON	
SECT. 33, T30N, R11E	
DRAWN BY: LISA MEYER	
SCALE 1" = 300'	DATE JUNE 11, 1985
SHEET 1 OF 1	DWG. NO: 1442

RECORD # 30-273  
 LANGLADE COUNTY SURVEYORS OFFICE  
 DATE FILED: 6/19/85 BY: D.T.