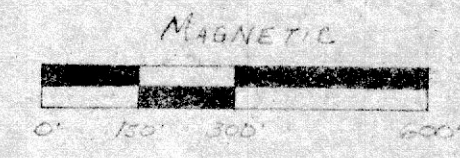
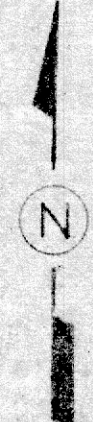
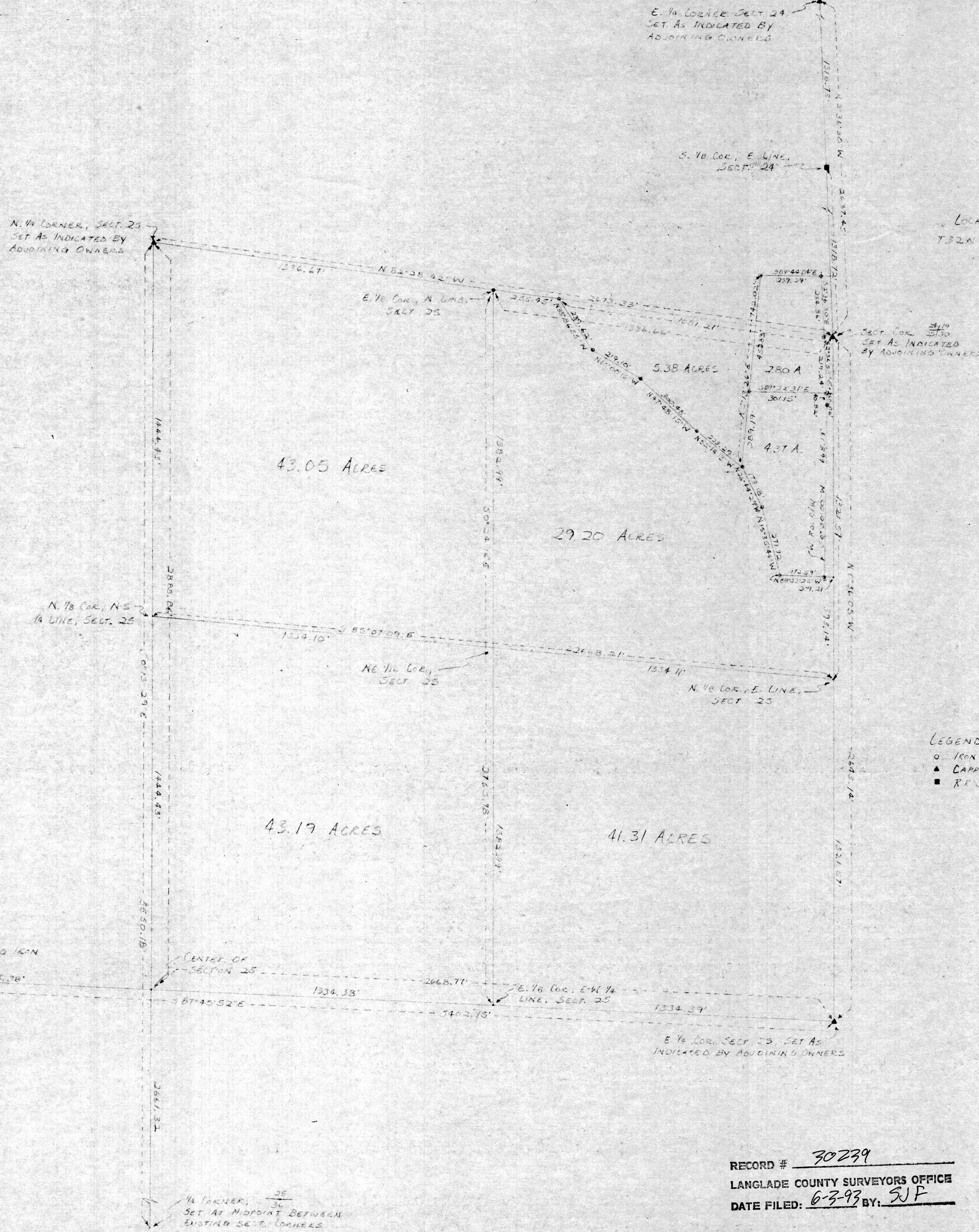


MAP OF SURVEY

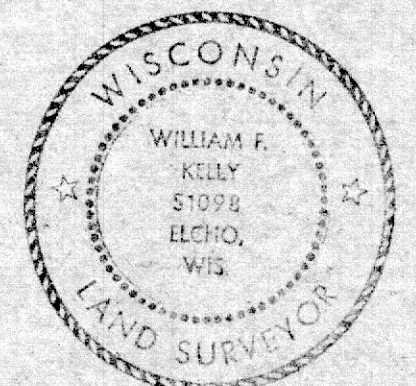
FOR KENNETH SCHMIEGE

LOCATED IN THE SE1/4 SE1/4, SECT. 24 & NE1/4, SECT. 25,
T32N. R11E, TOWN OF PECK, LANGLADE COUNTY, WISCONSIN



SCALE: 1" = 200'

- LEGEND:
- IRON PIPE, SET
 - ▲ CAPPED NAIL, SET
 - RE-SPICE, SET



William F. Kelly 5/10/84

RECORD # 30239
 LANGLADE COUNTY SURVEYORS OFFICE
 DATE FILED: 6-3-93 BY: SWP

BUILDERS SERVICE ENGINEERING DIVISION	
KENNETH SCHMIEGE	
MAP OF SURVEY	
SECTS 24 & 25, T32N. R11E	
DRAWN BY: LISA MEYER	
SCALE 1" = 300'	DATE MAY 9, 1984
SHEET 1 OF 1	DWG. NO: 1266