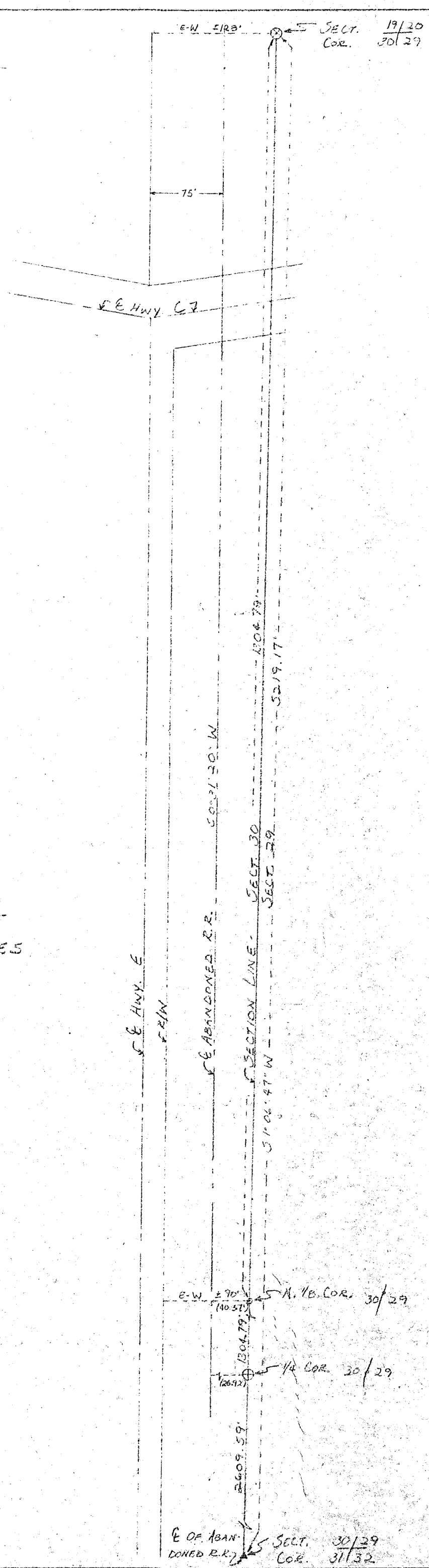


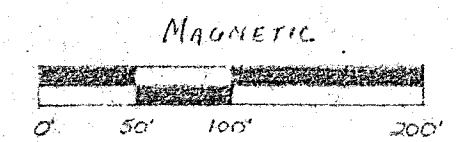
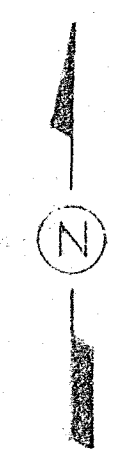
MAP OF SURVEY - ANTON NOYAK R.R. R/W

LOCATED IN THE NE1/4 NE1/4, SECT. 30 T32N. R1E
TOWN OF NEVA, LANGLADE COUNTY, WIS.

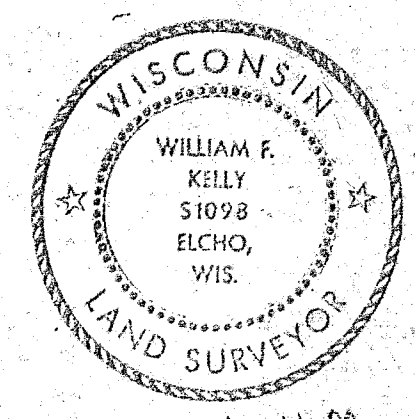
TOTAL AREA -
± 2.9 ACRES



- LEGEND:
- IRON PIPE, SET
 - ⊕ ALUMINUM CAP MONUMENT, SET
 - ▲ PK NAIL, FOUND IN PLACE
 - ⊗ BRASS CAP MONUMENT, FOUND IN PLACE



SCALE: 1"=100'



William F. Kelly 5-22-84

RECORD # - 30238
LANGLADE COUNTY SURVEYORS OFFICE
DATE FILED: 6-3-93 BY: SJP

BUILDERS SERVICE ENGINEERING DIVISION	
SURVEY OF	
R.R. R/W	
ANTON NOYAK	
DRAWN BY: LISA MEYER	
SCALE 1"=100'	DATE MAY 22, 1984
SHEET 1 OF 1	DWG. NO: 1277