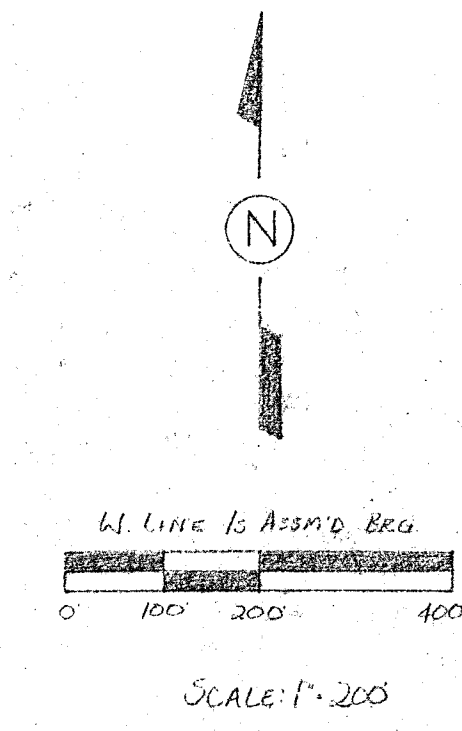
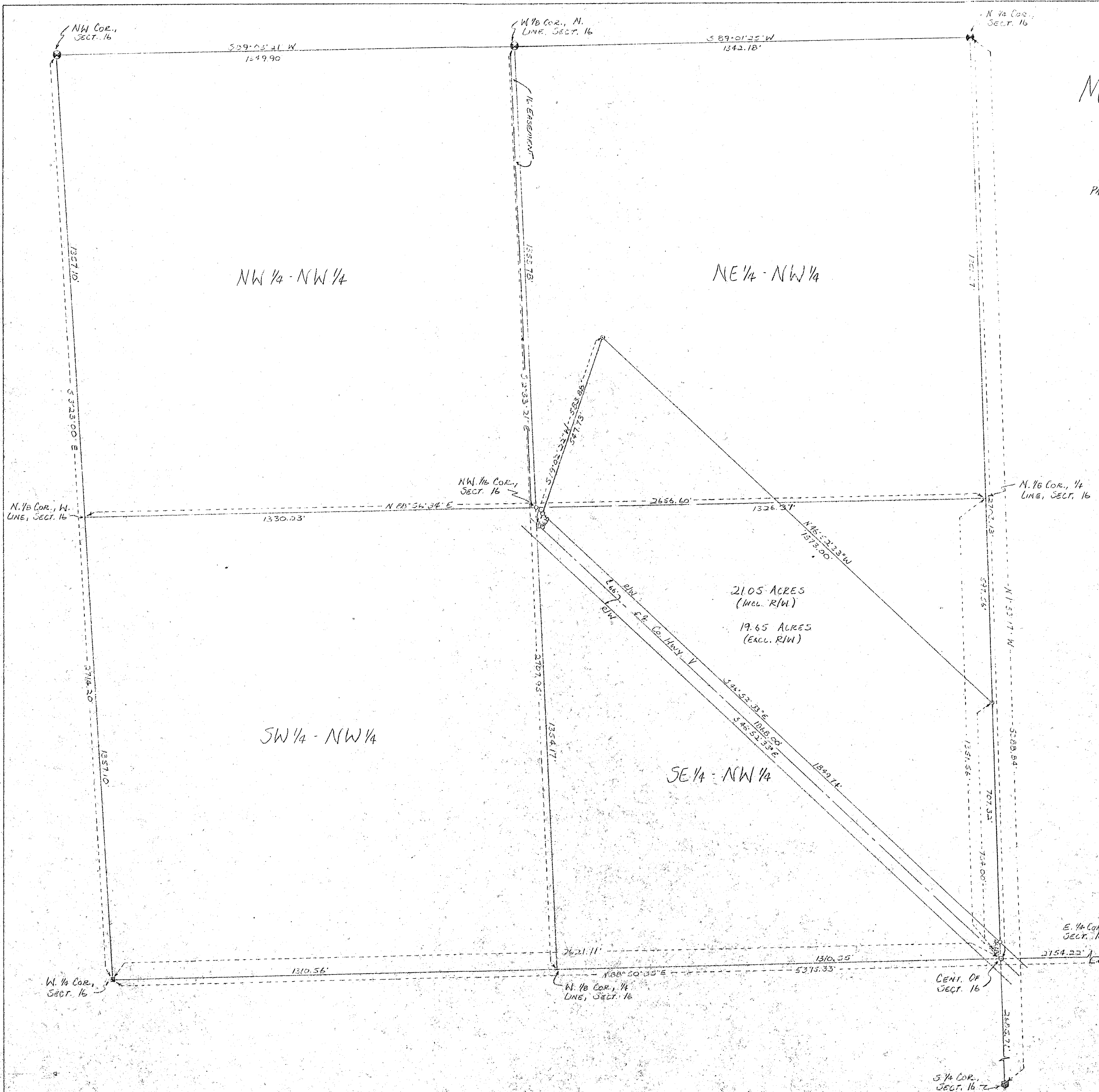


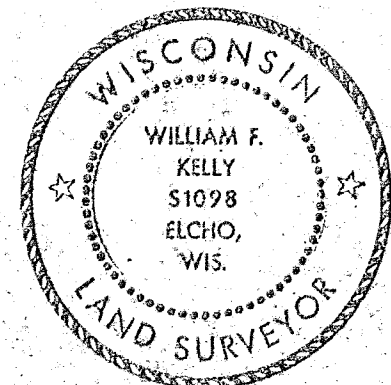
# MAP OF SURVEY

FOR: WILLIAM HESS

PART OF THE E 1/2 NW 1/4, SECT. 16, T32N, R1E  
TOWN OF NEVA, LANGLADE COUNTY, WI



- LEGEND:
- 1/2" x 30" IRON PIPE, SET, MIN. WT 113#/L.F.
  - R.R. SPIKE, SET
  - R.R. SPIKE, FOUND IN PLACE
  - WELL POINT, FOUND IN PLACE
  - ⊗ BRASS CAP MONUMENT, FOUND IN PLACE



William F. Kelly  
 6-3-85

BUILDERS SERVICE ENGINEERING DIVISION	
SURVEY MAP	
PART OF E 1/2 NW 1/4, SECT. 16, T32N, R1E	
WILLIAM HESS	
DRAWN BY: LISA MEYER	
SCALE 1" = 200'	DATE JUNE 3, 1985
SHEET 1 OF 1	DWG. NO: 1434

RECORD # 20297  
 LANGLADE COUNTY SURVEYORS OFFICE  
 DATE FILED: 6-3-85 BY: S.J.F.