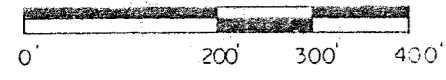
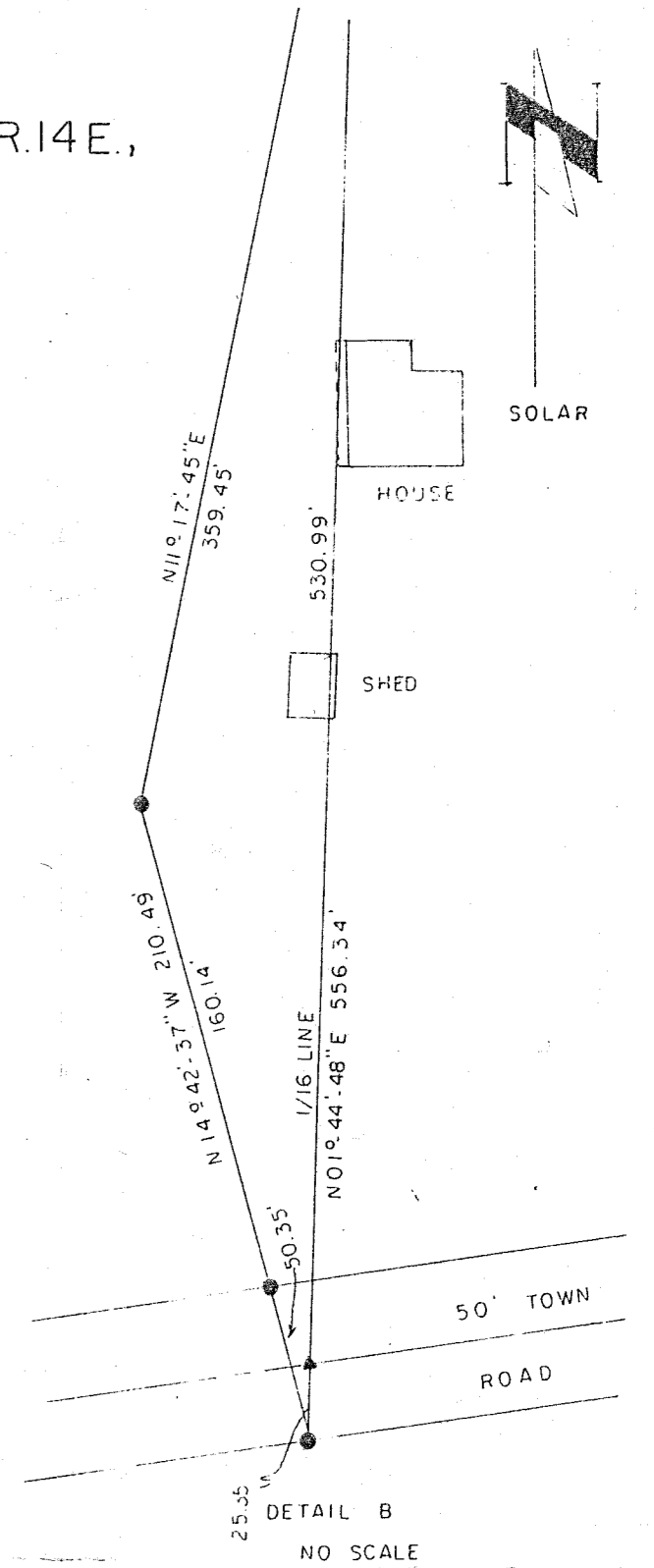
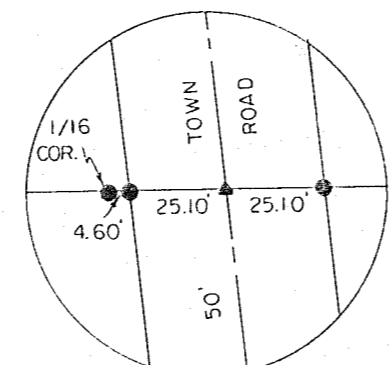
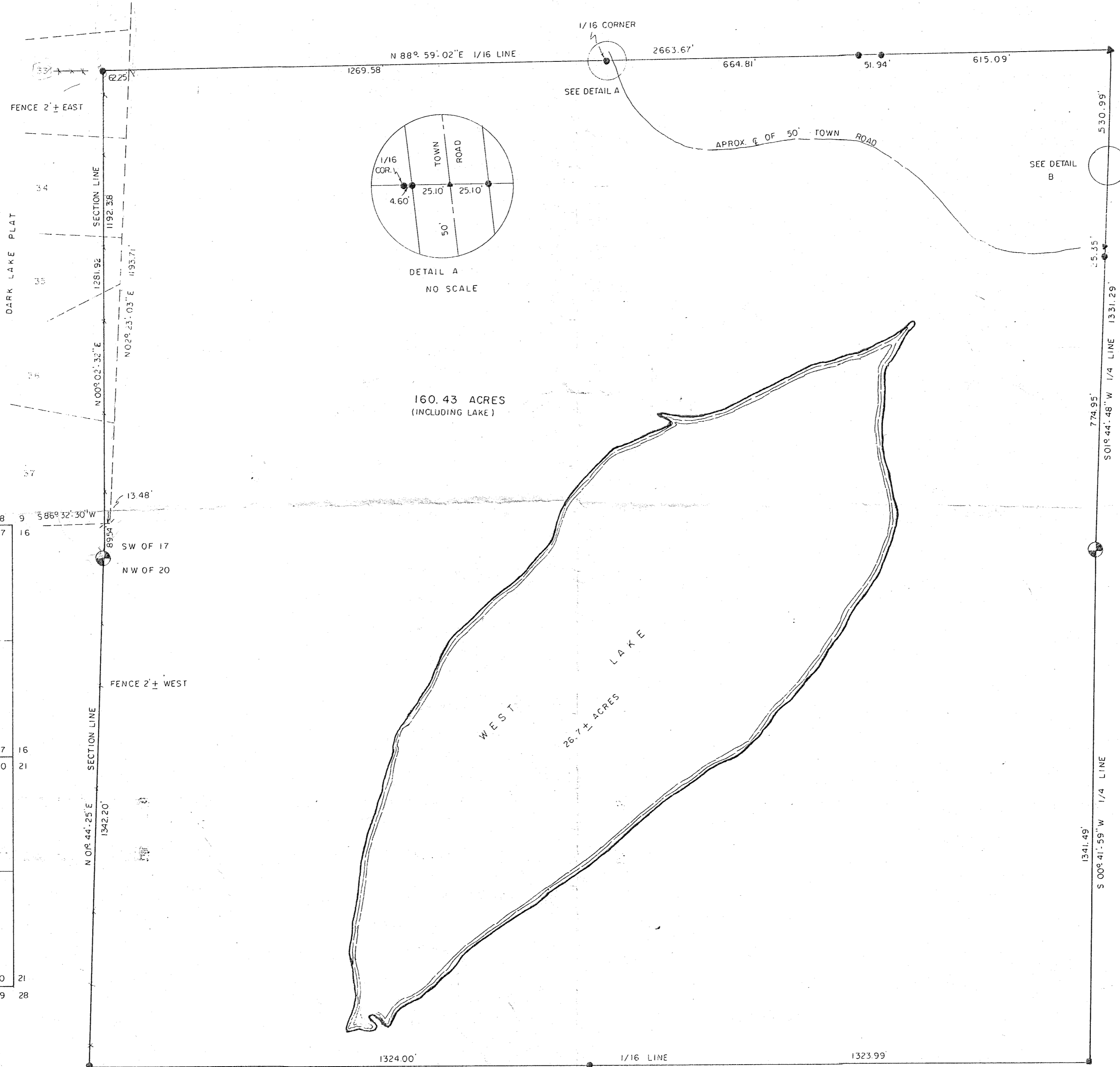
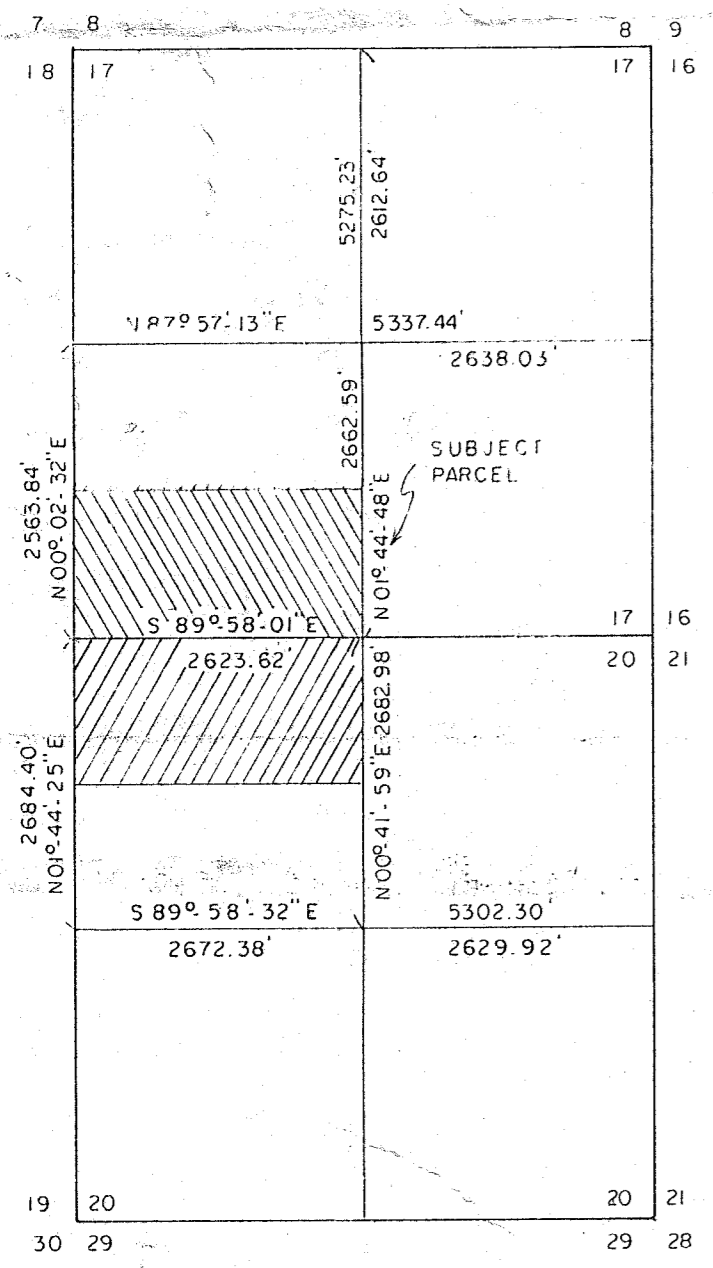


SURVEY OF THE S 1/2 OF THE SW 1/4 OF SECTION 17 AND THE N 1/2 OF THE NW 1/4 OF SECTION 20, ALL IN T31N, R.14E.,
TOWN OF WOLF RIVER, LANGLADE COUNTY, WISCONSIN

LEGEND



- SCALE: 1" = 200'
- = SET 3/4" ROD
 - = FOUND 1/4" I.P. WITH CAP
 - ▲ = SET P. K. NAIL
 - ▲ = SET STEEL FENCE POST AT APPROX. CORNER
 - ⊙ = SECTION CORNER



CERTIFICATE

ON THE BASIS OF MY KNOWLEDGE, INFORMATION AND BELIEF, I CERTIFY TO GARY BEGOTKA TO THE RESULTS OF THIS SURVEY WHICH WAS MADE WITH THE NORMAL STANDARD OF CARE OF PROFESSIONAL LAND SURVEYORS PRACTICING IN WISCONSIN

5-17-93
DATE

Thomas J. McGuire
THOMAS J. MCGUIRE

RECORD # 30190
LANGLADE COUNTY SURVEYORS OFFICE
DATE FILED: 5/21/93 BY: D.T.