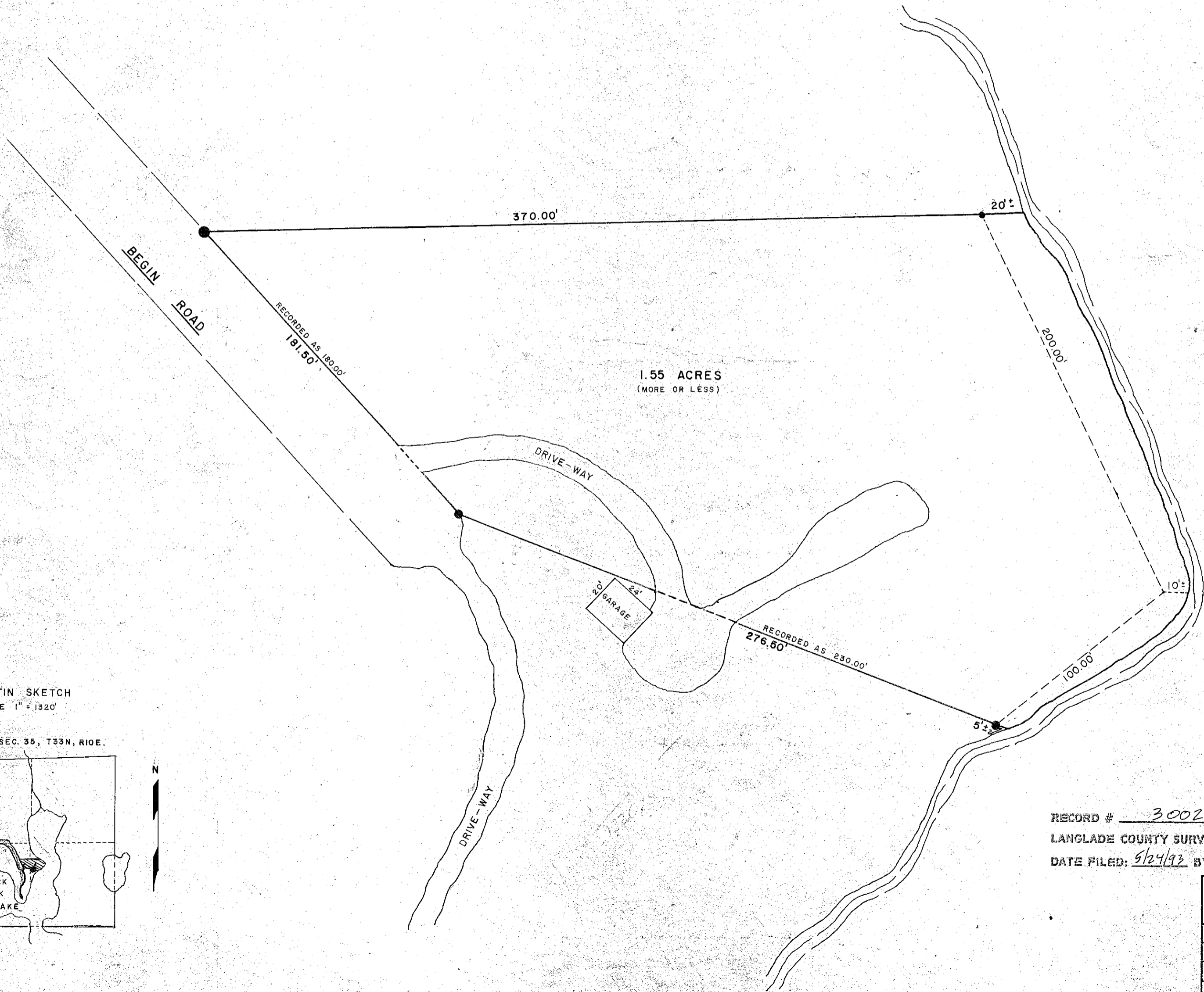


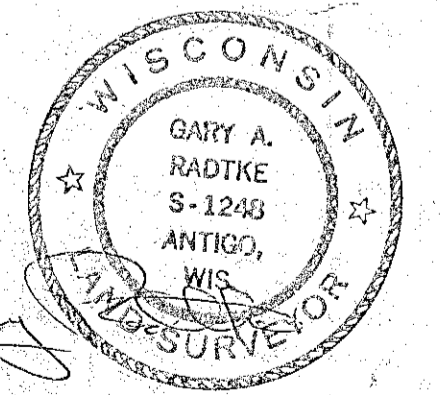
A PARCEL OF LAND LOCATED IN THE SW 1/4 AND THE SE 1/4  
 OF THE NW 1/4 OF SEC. 35, T33N, R10E, TOWN OF UPHAM,  
 LANGLADE COUNTY, WISCONSIN.



BLACK  
 OAK  
 LAKE



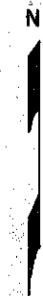
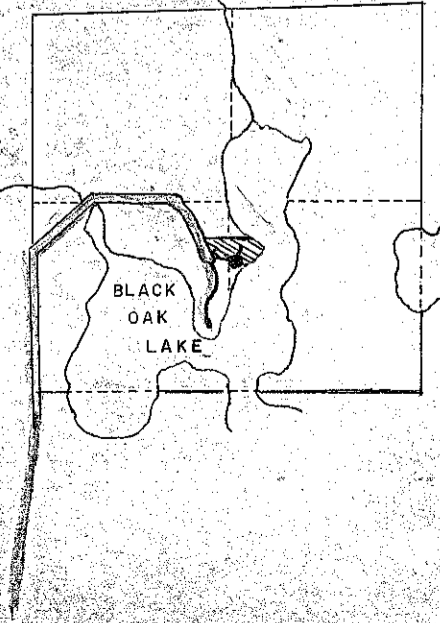
LEGEND  
 2" ANGLE IRON.....●  
 1" IRON PIPE.....●



RECORD # 30025  
 LANGLADE COUNTY SURVEYORS OFFICE  
 DATE FILED: 5/24/93 BY: D.T.

LOCATIN SKETCH  
 SCALE 1" = 320'

NW 1/4, SEC. 35, T33N, R10E.



DYNAMIC ENGINEERING AND SURVEYING			
SCALE	REVISIONS	BY	DATE
1" = 40'			
DATE			
8-10-78			
DR'N.	CKD.		
T.V.			
AP'VD.			
TITLE		NO.	
ROLAND ZELLMER		905-SP-78	