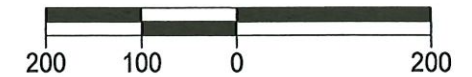


# PLAT OF SURVEY

**PARTS OF THE NW1/4 SW1/4  
AND NE 1/4 SW 1/4  
SECTION 23, T34N-R12E,  
TOWN OF AINSWORTH,  
LANGLADE COUNTY, WISCONSIN**

SCALE: 1 INCH = 200 FEET

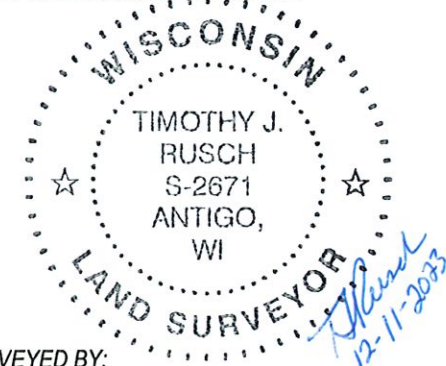


I, TIMOTHY J. RUSCH, PROFESSIONAL LAND SURVEYOR,  
DO HEREBY CERTIFY:

THAT I HAVE SURVEYED AND MAPPED BY THE ORDER OF  
RICK WIEDMEYER, OWNER, A PARCEL LOCATED IN  
SECTION 23, T34N-R12E, TOWN OF AINSWORTH, BEING  
THE NE 1/4 SW 1/4 EXCEPT AS DESCRIBED IN DEED #  
458713, PLUS LANDS AS DESCRIBED IN DEED #458712;  
MORE PARTICULARLY DESCRIBED AS FOLLOWS:

COMMENCING AT THE SOUTH 1/4 CORNER OF SAID  
SECTION 23; THENCE N02°19'10"E, 1330.50 FEET TO THE  
SOUTHEAST CORNER OF SAID NE 1/4 SW 1/4, THE POINT OF  
BEGINNING; THENCE S89°59'41"W, ALONG THE SOUTH  
LINE OF SAID NE 1/4 SW 1/4, 1310.35 FEET TO THE  
CENTERLINE OF LAKE AGNES ROAD; THENCE  
N01°45'08"E, ALONG SAID CENTERLINE, 681.08 FEET;  
THENCE CONTINUING ALONG SAID CENTERLINE, 132.96  
FEET ALONG A CURVE TO THE LEFT, SAID CURVE HAVING  
A RADIUS OF 172.92 FEET, CENTRAL ANGLE OF 44°03'20",  
CHORD BEARING OF N19°45'12"W, AND CHORD LENGTH  
OF 129.71 FEET; THENCE CONTINUING ALONG SAID  
CENTERLINE N41°46'52"W, 89.29 FEET; THENCE  
CONTINUING ALONG SAID CENTERLINE, 259.66 FEET  
ALONG A CURVE TO THE RIGHT, SAID CURVE HAVING A  
RADIUS OF 175.15 FEET, CENTRAL ANGLE OF 84°56'29",  
CHORD BEARING OF N0°41'22"W, AND CHORD LENGTH OF  
236.53 FEET; THENCE CONTINUING ALONG SAID  
CENTERLINE, N43°09'36"E, 92.74 FEET; THENCE  
CONTINUING ALONG SAID CENTERLINE, N37°43'40"E,  
121.88 FEET; THENCE CONTINUING ALONG SAID  
CENTERLINE, N28°54'53"E, 63.68 FEET; THENCE  
N89°49'46"E, ALONG THE NORTH LINE OF SAID NE 1/4 SW 1/4  
, 1275.05 FEET; THENCE S02°19'10"W, ALONG THE EAST  
LINE OF SAID NE 1/4 SW 1/4, 1330.50 FEET TO THE POINT  
OF BEGINNING;

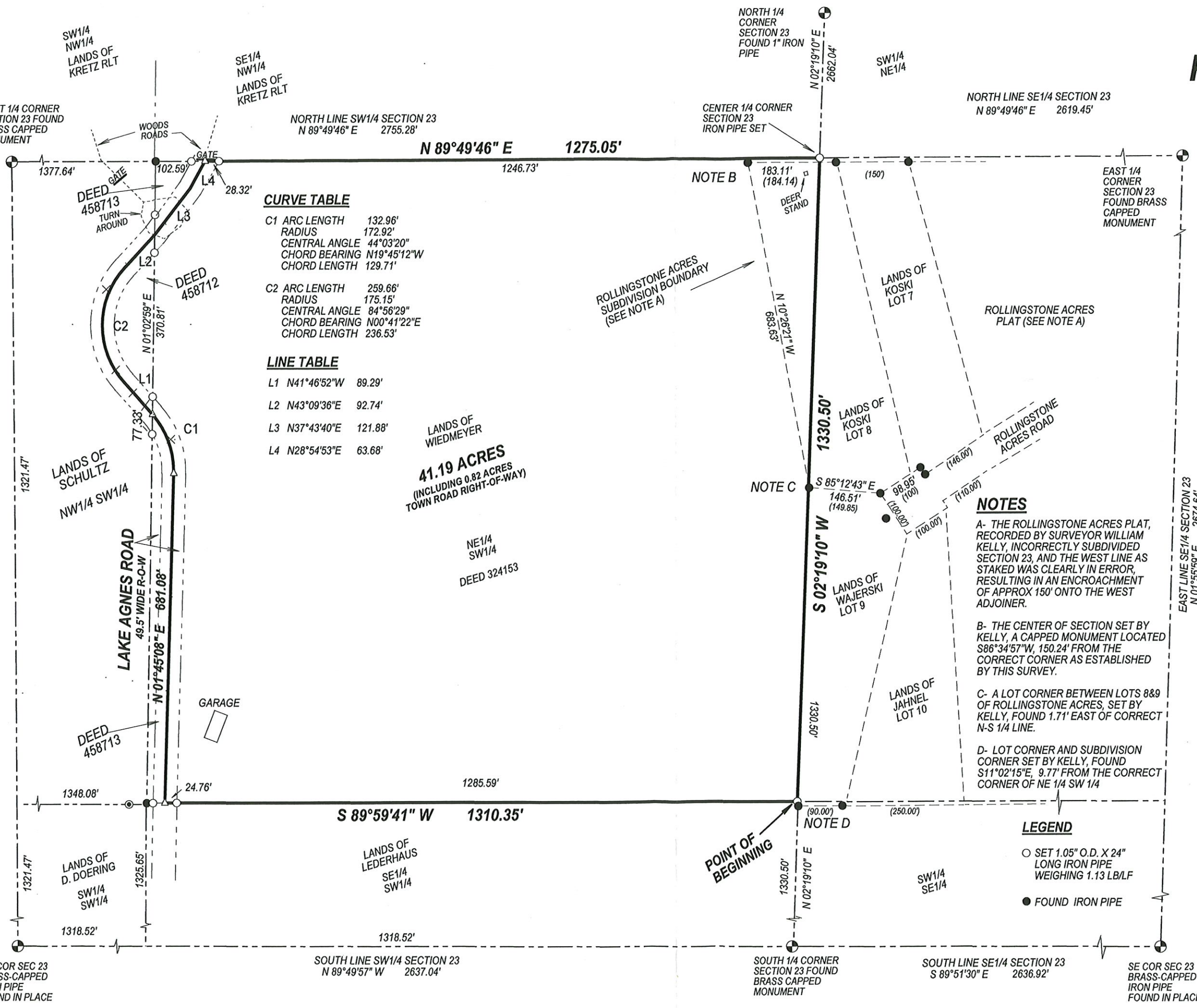
THAT THIS MAP IS A TRUE AND CORRECT  
REPRESENTATION OF THE BOUNDARIES SURVEYED TO  
THE BEST OF MY KNOWLEDGE AND BELIEF.



SURVEYED BY:  
RUSCH ENGINEERING & SURVEYING LLC  
400 RUSCH ROAD  
ANTIGO, WI 54409  
(715)623-5044  
PROJECT # 20-6196

BEARINGS REFERENCED TO THE LANGLADE  
2662194TY COORDINATE SYSTEM GRID

RECORD # 20640  
LANGLADE COUNTY SURVEYORS OFFICE  
DATE FILED: 2/26/25 BY: D.T.



**CURVE TABLE**

C1	ARC LENGTH	132.96'
	RADIUS	172.92'
	CENTRAL ANGLE	44°03'20"
	CHORD BEARING	N19°45'12"W
	CHORD LENGTH	129.71'
C2	ARC LENGTH	259.66'
	RADIUS	175.15'
	CENTRAL ANGLE	84°56'29"
	CHORD BEARING	N00°41'22"E
	CHORD LENGTH	236.53'

**LINE TABLE**

L1	N41°46'52"W	89.29'
L2	N43°09'36"E	92.74'
L3	N37°43'40"E	121.88'
L4	N28°54'53"E	63.68'

**41.19 ACRES**  
(INCLUDING 0.82 ACRES  
TOWN ROAD RIGHT-OF-WAY)

**NOTES**

- A- THE ROLLINGSTONE ACRES PLAT, RECORDED BY SURVEYOR WILLIAM KELLY, INCORRECTLY SUBDIVIDED SECTION 23, AND THE WEST LINE AS STAKED WAS CLEARLY IN ERROR, RESULTING IN AN ENCROACHMENT OF APPROX 150' ONTO THE WEST ADJOINER.
- B- THE CENTER OF SECTION SET BY KELLY, A CAPPED MONUMENT LOCATED S86°34'57"W, 150.24' FROM THE CORRECT CORNER AS ESTABLISHED BY THIS SURVEY.
- C- A LOT CORNER BETWEEN LOTS 8&9 OF ROLLINGSTONE ACRES, SET BY KELLY, FOUND 1.71' EAST OF CORRECT N-S 1/4 LINE.
- D- LOT CORNER AND SUBDIVISION CORNER SET BY KELLY, FOUND S11°02'15"E, 9.77' FROM THE CORRECT CORNER OF NE 1/4 SW 1/4

**LEGEND**

- SET 1.05" O.D. X 24" LONG IRON PIPE WEIGHING 1.13 LB/LF
- FOUND IRON PIPE

SW COR SEC 23  
BRASS-CAPPED  
IRON PIPE  
FOUND IN PLACE

SOUTH LINE SW1/4 SECTION 23  
N 89°49'57" W 2637.04'

SOUTH 1/4 CORNER  
SECTION 23 FOUND  
BRASS CAPPED  
MONUMENT

SOUTH LINE SE1/4 SECTION 23  
S 89°51'30" E 2636.92'

SE COR SEC 23  
BRASS-CAPPED  
IRON PIPE  
FOUND IN PLACE