

# PLAT OF SURVEY

THE SE1/4 NE1/4, NE1/4 SE1/4 AND SE1/4 SE1/4 OF SECTION 10, THE NW1/4, THE SW1/4, THE SW1/4 NE1/4, SE1/4 NE1/4, NW1/4 SE1/4, NE1/4 SE1/4, AND SW1/4 SE1/4 OF SECTION 11, PART OF THE NW1/4 NW1/4, NE1/4 NW1/4 AND NW1/4 NE1/4 OF SECTION 14, LOCATED IN T32N-R10E, TOWN OF PECK, LANGLADE COUNTY, WISCONSIN

I, TIMOTHY J. RUSCH, PROFESSIONAL LAND SURVEYOR, DO HEREBY CERTIFY:

THAT I HAVE SURVEYED AND MAPPED BY THE ORDER OF NICK SCHMALZ, THE SE1/4 NE1/4, NE1/4 SE1/4 AND SE1/4 SE1/4 OF SECTION 10, THE NW1/4, THE SW1/4, THE SW1/4 NE1/4, SE1/4 NE1/4, NW1/4 SE1/4, NE1/4 SE1/4, AND SW1/4 SE1/4 OF SECTION 11, PART OF THE NW1/4 NW1/4, NE1/4 NW1/4 AND NW1/4 NE1/4 OF SECTION 14, LOCATED IN T32N-R10E, TOWN OF PECK, LANGLADE COUNTY, WISCONSIN

DESCRIBED AS FOLLOWS:  
 BEGINNING AT THE NW CORNER OF SECTION 11; THENCE S87°00'07"E, 2656.52 FEET; THENCE S05°04'04"W, 1327.57 FEET; THENCE S87°31'56"E, 3016.46 FEET; THENCE S10°30'14"E, 1335.69 FEET; THENCE S10°31'56"E, 1335.20 FEET; THENCE N89°17'16"W, 1870.89 FEET; THENCE S02°34'03"E, 1351.21 FEET; THENCE S06°41'10"W, 401.13 FEET; THENCE S89°21'16"W, 4711.80 FEET; THENCE N01°30'31"W, 482.78 FEET; THENCE S87°29'04"W, 1323.51 FEET; THENCE N07°12'48"E, 2801.42 FEET; THENCE N00°53'10"W, 1315.56 FEET; THENCE N85°30'07"E, 1599.51 FEET; THENCE N02°31'15"W, 1352.00 FEET TO THE POINT OF BEGINNING.

THAT THIS SURVEY WAS FOR THE PURPOSE OF LOCATING PROPERTY BOUNDARIES ONLY. NOT ALL STREAMS, PONDS, TRAILS OR OTHER FEATURES ARE MAPPED.

THAT THIS IS A TRUE AND CORRECT REPRESENTATION OF THE BOUNDARIES SURVEYED TO THE BEST OF MY KNOWLEDGE AND BELIEF.

RECORD # 26633  
 LANGLADE COUNTY SURVEYORS OFFICE  
 DATE FILED: 2/26/25 BY: D.S.

ORIGINAL  
 STAMPED  
 & SIGNED  
 01/21/2021

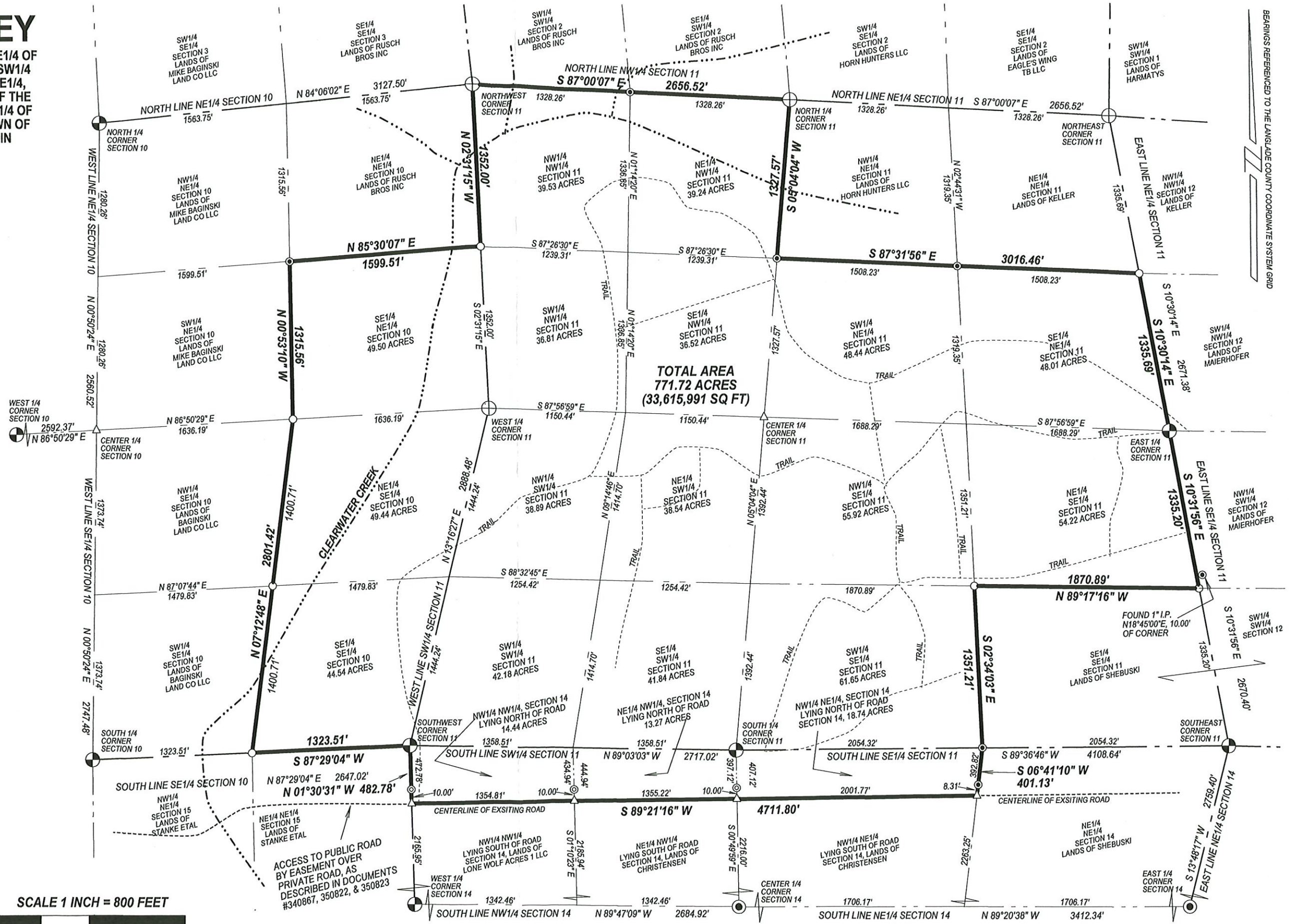
## LEGEND

- APPROXIMATE TRAIL (NOT TO SCALE)
- △ COMPUTED POINT
- FOUND 1" IRON PIPE
- ⊕ FOUND ALUMINUM CAPPED MONUMENT
- ⊙ FOUND BRASS CAPPED MONUMENT
- ⊙ SET 1.05" O.D. X 18" LONG IRON PIPE WEIGHING 1.13 LBS/LF
- SET 1.05" O.D. X 40" LONG IRON PIPE WEIGHING 1.13 LBS/LF

SCALE 1 INCH = 800 FEET



SURVEYED BY: RUSCH ENGINEERING & SURVEYING LLC, 400 RUSCH ROAD, ANTIGO, WI 54409, (715)623-5044, PROJECT # 20-6298, FIELDWORK COMPLETED: 01/2021



BEARINGS REFERENCED TO THE LANGLADE COUNTY COORDINATE SYSTEM GRID