

LOCATION SKETCH

SCALE
0 1/2 1 2
MILES

END OF RELOC. ORDER
DIV. JOB NO. 7982, SEC. I.
STA. 75+40
EQUALS BEG. OF RELOC. ORDER
DIV. JOB NO. 7982, SEC. II.

OFFICIAL LAYOUT
OF 1923

END OF RELOC. ORDER
DIV. JOB NO. 7982, SEC. II.
STA. 149+67

PI. 152 + 79.7
Δ 26°-58' RT.
D 4'
T 343.5
L 674.2
R 1432.7

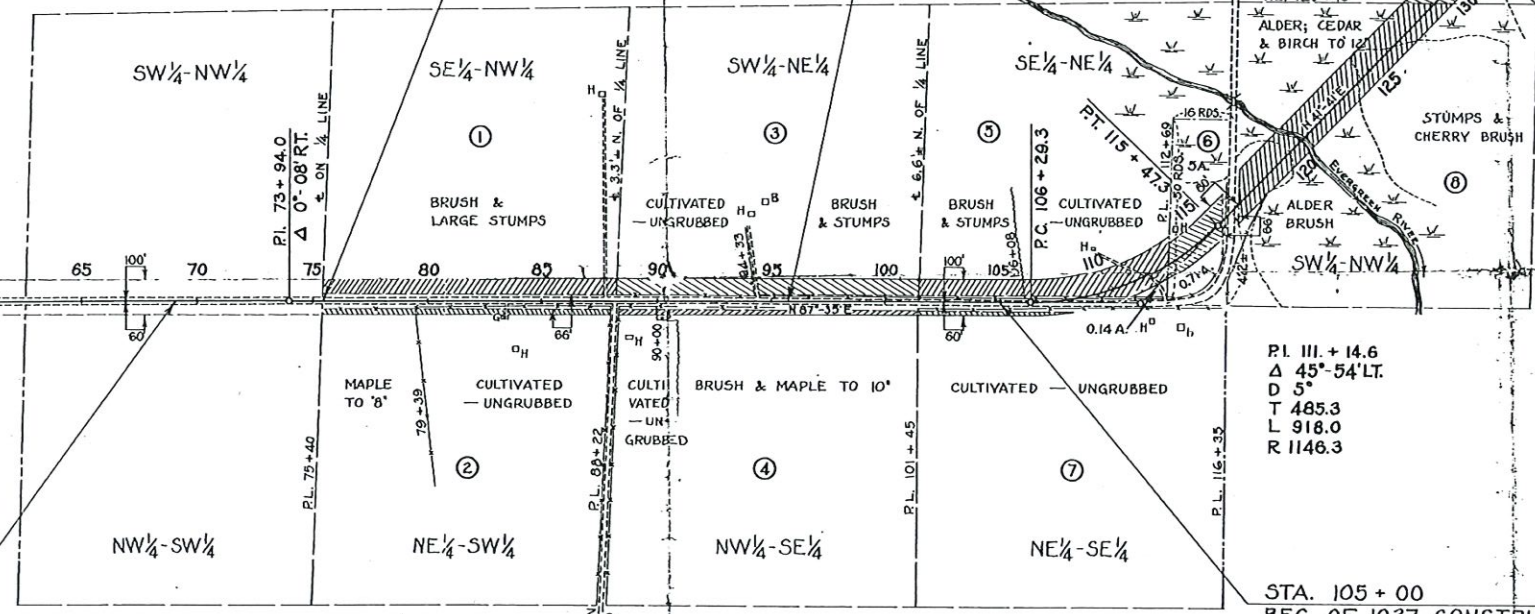
STA. 148+00
END OF 1937 CONST.
STATE PROJ. 7982, SEC. II.

PI. 134 + 88.9
Δ 16°-26' RT.
D 3'
T 275.8
L 547.8
R 1910.1

PI. III + 14.6
Δ 45°-54' LT.
D 5'
T 485.3
L 918.0
R 1146.3

END OF 1936 CONSTRUCTION
STATE PROJ. 7982, SEC. I.
STA. 69+00

STA. 105+00
BEG. OF 1937 CONSTRUCTION
STATE PROJ. 7982, SEC. II.



SCHEDULE OF R/W REQUIRED

PAR.	OWNER	ADDRESS	DESCRIPTION	ACRES PURCHASED			TOTAL
				MARSH	UNIMPROVED	IMPROVED	
1	MENASHA WOODEN WARE CO.	MENASHA, WIS.	SE 1/4-NW 1/4 SECT. 13 T31N R13E		2.02		2.02
2	"	"	NE 1/4-SW 1/4 SECT. 13 " "		0.73		0.73
3	LANGLADE COUNTY	ANTIGO, WIS.	SW 1/4-NE 1/4 SECT. 13 " "		2.18		2.18
4	MENASHA WOODEN WARE CO.	MENASHA, WIS.	NW 1/4-SE 1/4 SECT. 13 " "		0.65		0.65
5	"	"	PART OF SE 1/4-NE 1/4 SECT. 13 " "		2.59		2.59
6	"	"	PART OF SE 1/4-NE 1/4 SECT. 13 " "		1.02		1.02
7	"	"	NE 1/4-SE 1/4 SECT. 13 " "		0.28		0.28
8	TORREY CEDAR CO.	CLINTONVILLE, WIS.	SW 1/4-NW 1/4 SECT. 18 " R14E	2.71	1.65		4.36
9	MENASHA WOODEN WARE CO.	MENASHA, WIS.	NW 1/4-NW 1/4 SECT. 18 " "	1.08	1.42		2.48
10	"	"	NE 1/4-NW 1/4 SECT. 18 " "		3.17		3.17
GRAND TOTAL				3.77	15.71	0.00	19.48

DRAWN BY B. H. RANDOLPH
COMPUTED BY B. H. RANDOLPH
CHECKED BY K. H. BOLLER

RECORD # 20605
LANGLADE COUNTY SURVEYORS OFFICE
DATE FILED: 8/14/24 BY: D.T.

PLAT OF RIGHT OF WAY REQUIRED
DIVISION JOB NO. 7982, SEC. II
ELTON - LANGLADE ROAD
S.T.H. NO. 64 LANGLADE COUNTY

SCALE
0 200' 400' 600'
100' 300'