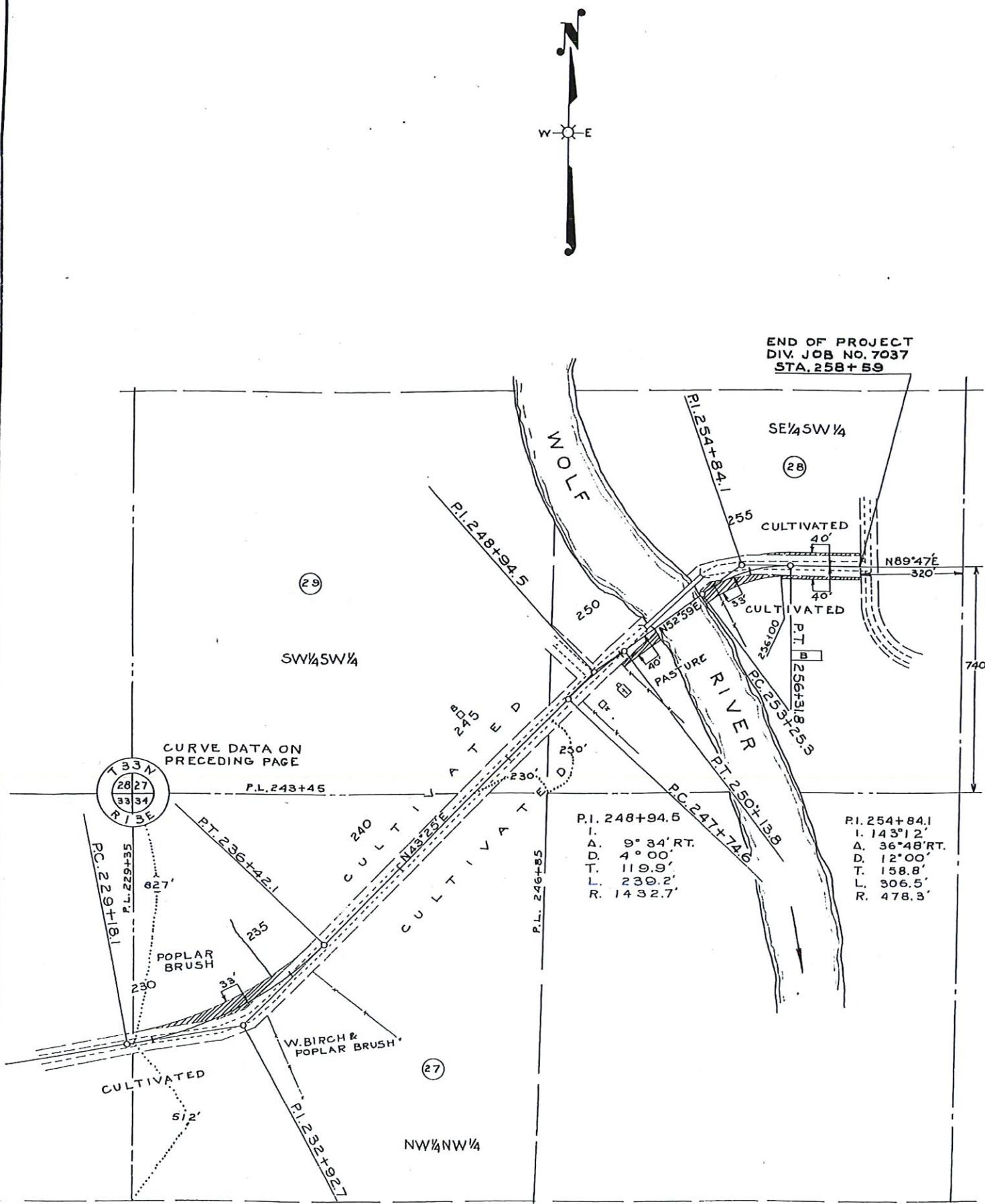


Only partly acquired.

PAR.	OWNER	DESCRIPTION	ACRES		
			MARSH	UNIMPROVED	PURCHASED IMPROVED TOTAL
8	YAWKEY-BISSELL LBR. CO.	NW 1/4 NW 1/4 SECT. 8 T32N, R13E		1.89	1.89
9	JOSEPH BAKER & WIFE	SW 1/4 SW 1/4 SECT. 5 " "		1.30	1.30
10	C. & N.W. R.R. CO.	SE 1/4 SW 1/4 " "		1.07	1.07
11	LANGLADE CO.	NE 1/4 SW 1/4 SECT. 5 T32N, R13E.		1.42	1.42
12	LEONA VANNEST	NW 1/4 SE 1/4 " " "		1.06	.08 1.14
13	"	SW 1/4 NE 1/4 " " "		0.21	.21
14	JOHN GRAY	SE 1/4 NE 1/4 " " "		.23	.17 .40
15	LANGLADE CO.	NE 1/4 NE 1/4 " " "		1.77	1.77
16	YAWKEY-BISSELL LBR. CO.	NW 1/4 NW 1/4 SECT. 4 T32N, R13E.		.37	.37
17	JOHN SHILBAUER	SE 1/4 SE 1/4 SECT. 32 T33N, R13E.		-	-
18	DR. F.K. VOSS & WIFE	SW 1/4 SW 1/4 SECT. 33 " "		2.11	2.11
19	"	NW 1/4 SW 1/4 " " "		1.62	1.62
20	"	NE 1/4 SW 1/4 " " "		-	-
21	BEN H. BAKER	SW 1/4 NW 1/4 SECT. 33 T33N, R13E.		.50	.50
22	JOSEPH BAKER & WIFE	SE 1/4 NW 1/4 " " "		.54	.10 .64
23	WIS. VALLEY TRUST CO.	SW 1/4 NE 1/4 " " "		1.90	.03 1.93
24	"	NW 1/4 NE 1/4 " " "		-	.012 .012
25	"	NE 1/4 NE 1/4 " " "		-	.004 .004
26	VINCENT DOZENSKI	SE 1/4 NE 1/4 SECT. 33 T33N, R13E.		-	-
27	WM. PRIEM	NW 1/4 NW 1/4 SECT. 34 T " "		.31	.02 .33
28	"	SE 1/4 SW 1/4 SECT. 27 " "		.14	.20 .34
29				16.44	.616 17.056



RECORD # 20584  
 LANGLADE COUNTY SURVEYORS OFFICE  
 DATE FILED: 4/17/04 BY: D.T.  
 after 1935

DRAWN BY L. MARBES & K.H. BOLLER  
 COMPUTED BY K.H. BOLLER  
 CHECKED BY D.H. FULTON

PLAT OF RIGHT OF WAY REQUIRED  
 DIVISION JOB NO. 7037  
 BRYANT - LILY ROA  
 CO. H. E. LANGLADE COUNT  
 STA 52  
 SCALE 0' 200' 400'