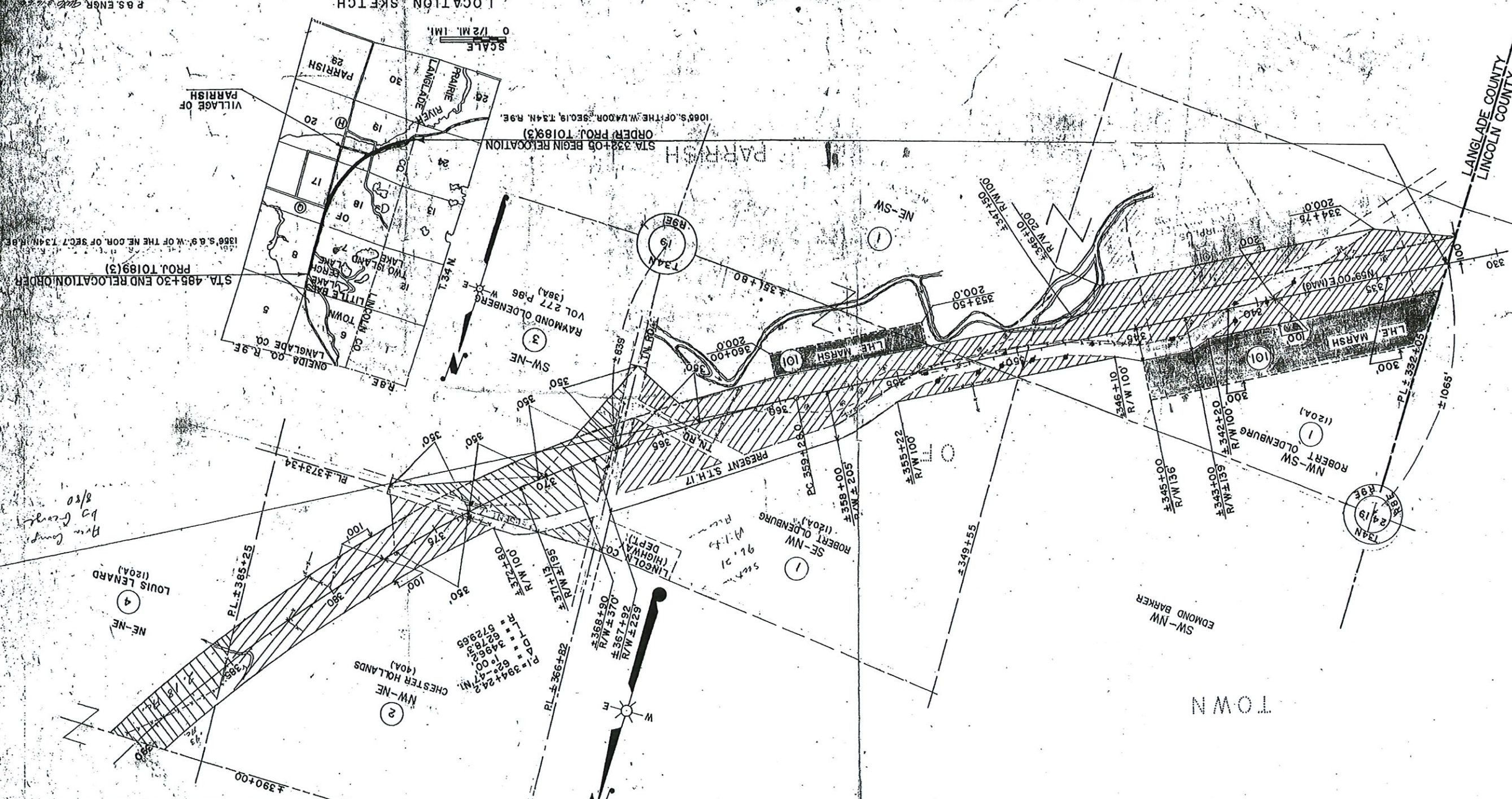


COUNTY AND HIGHWAY ROUTE	18	19	19E
CLASS AND AGREEMENT	21.3	189.0	34.2
FEDERAL DIVISION NUMBER	4	4	4
SHEET NUMBER			
TOTAL SHEETS			



PAR. NO.	OWNER	ADDRESS	DESCRIPTION	INTEREST	REQUIRED	ACRES	SHEET	PAR. NO.
1	ROBERT OLBENBURG & TRUE (HW)		NW-SW, NE-SW, SE-NW	SEC. 19 T. 34N. R. 9E.		17.0	17	
2	CHESTER HOLLANDS & AUGUSTA (HW)		NW-NE			5.67	18	
3	RAYMOND OLBENBURG & DELAINE (HW)		PT. SW-NE			3.88	19	
4	LOUIS LENARD & VALERIE (HW)		NE-NE			17.13	20	
101	ROBERT OLBENBURG & TRUE (HW)		NW-SW, NE-SW, SE-NW			0	101	

RECORD # 20583
 LANGLADE COUNTY SURVEYORS OFFICE
 DATE FILED: 4/17/24 BY: D.T.

STATE HIGHWAY COMMISSION OF WISCONSIN
 PLAT OF RIGHT OF WAY REQUIRED
 PROJECT - 10189(3)
 WEST COUNTY LINE - NORTH COUNTY LINE
 LANGLADE
 ST. 17
 BOOK 6576
 LENGTH 2.802 MILES
 SCALE 1" = 1200'

LOCATION SKETCH

