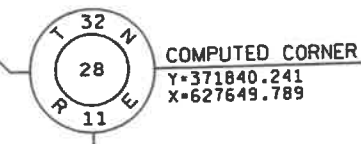


TOWN



PARCELS 21, 23, 25 AND 26

COURSE	DISTANCE	BEARING	PT NO	Y	X
5661-4563	2700.42'	S 88°17'01" W	5661	369253.279	630368.518
4563-130	147.92'	N 00°25'09" W	4563	369172.393	627669.313
130-128	141.85'	S 45°13'12" E	130	369320.313	627668.230
128-140	2497.43'	N 88°17'04" E	128	369220.398	627768.915
140-620	94.70'	N 45°09'39" E	140	369295.170	630265.231
620-617	41.38'	N 01°07'57" E	620	369361.944	630332.381
617-621	51.66'	N 15°41'45" E	617	369403.316	630333.198
621-622	24.75'	S 88°52'03" E	621	369453.050	630347.174
622-5661	199.31'	S 00°58'40" W	622	369452.560	630371.919

SW-SE  
28-32-11

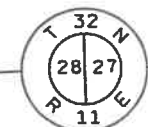
RONALD AND DAWN HOUDEK,  
RANDY AND LISA HOUDEK  
AND  
THOMAS AND JANICE HOUDEK  
36.88 ACRES REMAINING

SE-SE  
28-32-11

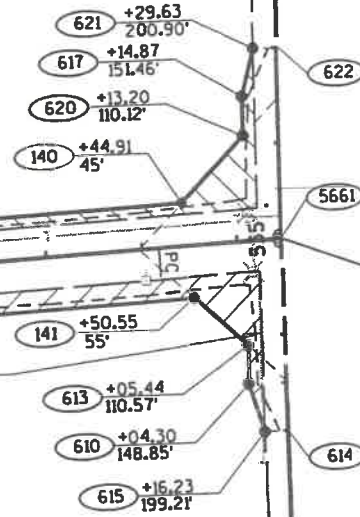
HOUDEK FARMS, INC.  
38.88 ACRES REMAINING

CTH B CURVE DATA  
PI STA. 109+47.01  
Y 369253.279  
X 630368.518  
Δ 01°20'11"  
D 00°30'58"  
L 258.91'  
T 129.46'  
R 11100.00'  
PC STA. 108+17.55  
PT STA. 110+76.46

FOUND 3/8-INCH BAR  
Y=371818.049  
X=630413.999



EXISTING R/W  
STAR-NEVA RD.  
SECTION LINE N00°58'40"E 2665.16'



OF

PARCELS 22 AND 24

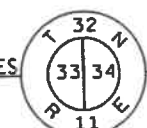
COURSE	DISTANCE	BEARING	PT NO	Y	X
5661-4563	2700.42'	S 88°17'01" W	5661	369253.279	630368.518
4563-126	148.20'	S 00°39'19" W	4563	369172.393	627669.313
126-131	146.64'	N 43°37'19" E	126	369024.198	627667.618
131-104	855.24'	N 88°17'01" E	131	369130.353	627768.786
104-106	100.50'	S 86°00'21" E	104	369155.970	628623.639
106-141	1550.39'	N 88°17'07" E	106	369148.970	628723.893
141-613	77.82'	S 45°50'02" E	141	369195.361	630273.589
613-610	38.29'	S 00°25'04" W	613	369141.139	630329.413
610-615	51.71'	S 14°21'39" E	610	369102.851	630329.134
615-614	24.75'	S 89°34'56" E	615	369052.756	630341.959
614-5661	200.71'	N 00°30'60" E	614	369052.575	630366.708

RITA SIMON  
18.14 ACRES REMAINING

RITA SIMON  
15.40 ACRES REMAINING

NE-NE  
33-32-11

COMPUTED FROM TIES  
Y=366596.127  
X=630344.559



NOTE:  
AYRES ASSOCIATES AND THE LANGLADE COUNTY HIGHWAY DEPARTMENT  
HAVE AGREED TO WAIVE STATUTES AE 7.03 AND AE 7.07 RELATED TO  
SETTING MONUMENTS. NO MONUMENTS WILL BE SET BY AYRES ASSOCIATES  
WITHIN AGRICULTURAL LANDS FROM STATION 34+00 TO STATION 379+43.64.

RECORD # 20576  
LANGLADE COUNTY SURVEYORS OFFICE  
DATE FILED: 11/16/13 DT

NEVA

FOUND PK NAIL  
STA. 109+47.01-0.75'L.T.  
Y=369253.279  
X=630368.518

DATE 06-12-2013

SCALE, FEET  
0 100 200

HWY: CTH B  
COUNTY: LANGLADE

STATE R/W PROJECT NUMBER 9360-02-00  
CONSTRUCTION PROJECT NUMBER

PLAT SHEET 4.07  
PS&E SHEET

E

GRID FACTOR

PLOT DATE: 6/14/2013

PLOT BY: soufalk

PLOT NAME:

PLOT SCALE: 1:200

WISDOT/CADD SHEET 75