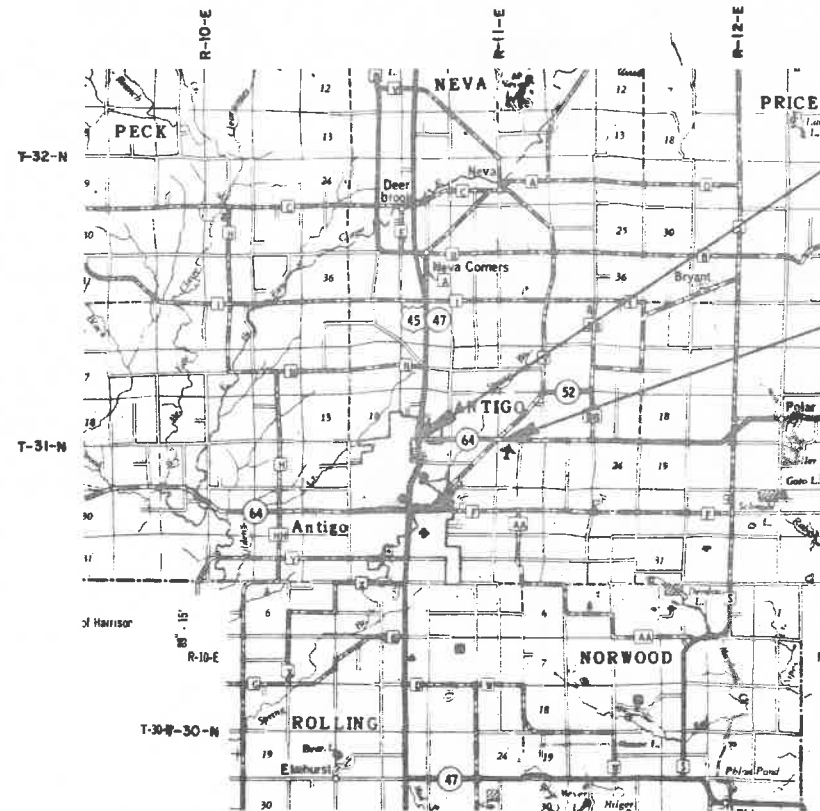


LANGLADE COUNTY
 FINDING, DETERMINATION AND DECLARATION APPROVED BY
 ADMINISTRATOR OF THE DIVISION OF HIGHWAYS
 ON 10/11/91 RECORDED 10/28/91 AS DOCUMENT NO. 295583,
 LANGLADE COUNTY REGISTRY, EFFECTIVE 11/6/91
 THE DATE OF PUBLICATION

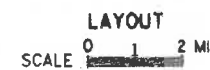
STATE OF WISCONSIN DEPARTMENT OF TRANSPORTATION

MAP OF CONTROLLED ACCESS
USH 45 - STH 52
 STH 64 LANGLADE COUNTY
 CONTROLLED ACCESS PROJECT 9140-04-29



FOR RIGHT OF WAY WIDTHS REFER TO PROJECT
 9140-02-21

STANDARD ABBREVIATIONS	
AGRICULTURAL	AGRI.
BUILDINGS	BLDGS.
GARAGE	G.
HOUSE	H.
OUT LOT	O.L.
PRIVATE DRIVEWAY	P.D.
PROPERTY LINE	P.L.
PUBLIC HIGHWAY	P.H.
SPECIAL CROSSING	S.C.
TAVERN	TAV.
LAND CONTRACT	L.C.
WARRANTY DEED	W.D.



TOTAL NET LENGTH OF CENTERLINE 1.716 MI.

BEGIN CONTROLLED ACCESS
 STA. 20+60 & STH 64

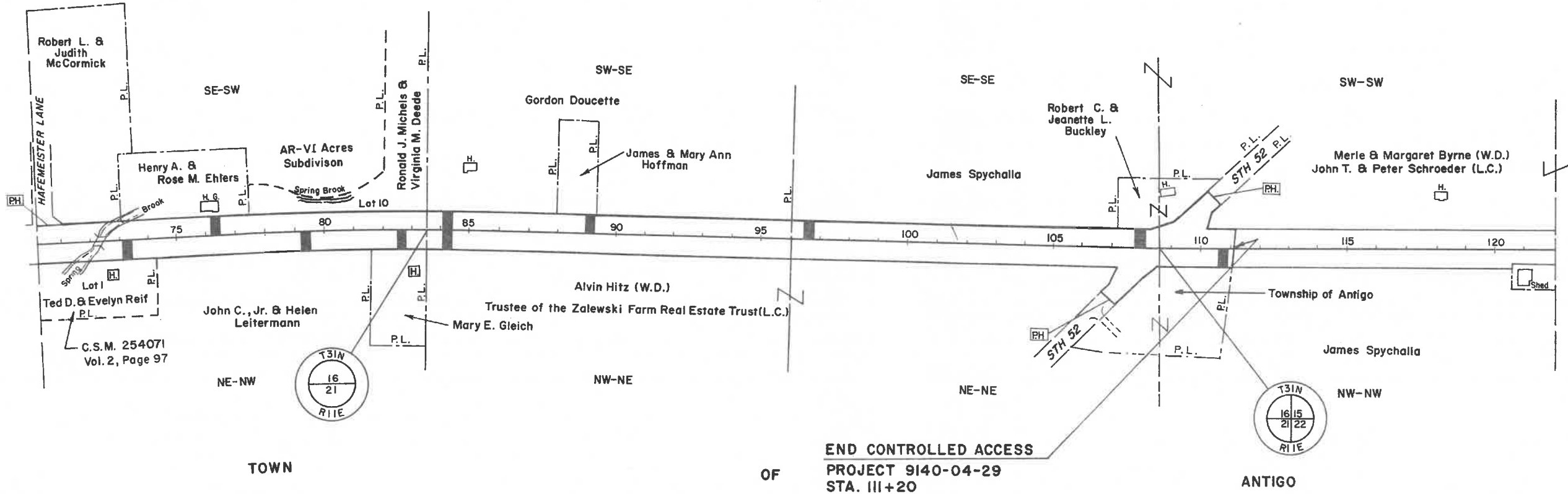
END CONTROLLED ACCESS
 STA. 111+20 & STH 64

RECORD # 20495
 LANGLADE COUNTY SURVEYORS OFFICE
 DATE FILED: 6/17/2020 BY: P. TUSTY

THIS CONTROLLED ACCESS MAP
 APPROVED AND ADOPTED ON DEC. 13, 1991
 PERSUANT TO
 FINDING DETERMINATION AND DECLARATION
 BY THE
 WISCONSIN DEPARTMENT OF TRANSPORTATION
 DIVISION OF HIGHWAYS AND TRANSPORTATION
 SERVICES

J. Malinen
 FR. ADMINISTRATOR

REVISED & AMENDED



NOTE: LANDLINES NOT TO SCALE

LEGEND

- PRIVATE DRIVEWAY ---
- PRIVATE DRIVEWAY (AGRICULTURAL) ---
- SPECIAL CROSSING ---
- PUBLIC HIGHWAY ---
- LIMITS OF CONTROL ---

CONTROLLED ACCESS
9140-04-29
USH 45 - STH 52
STH 64 LANGLADE COUNTY

