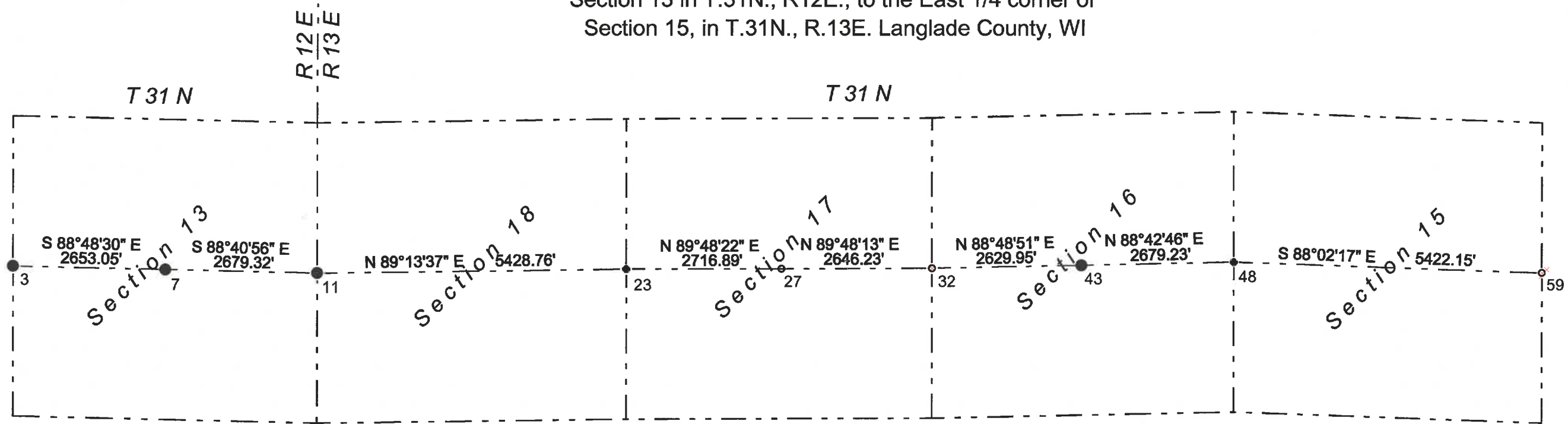


Map of Survey

Showing existing monumentation for corners in the Highway "64" corridor, from the West 1/4 corner of Section 13 in T.31N., R12E., to the East 1/4 corner of Section 15, in T.31N., R.13E. Langlade County, WI



LANGLADE COUNTY COORDINATE SYSTEM GRID BEARINGS SHOWN

SCALE:
1" = 2,000'

LEGEND

- PLSS corner iron pipe with brass cap found
- PLSS corner iron pipe in road
- PLSS corner monument as described

All coordinates obtained from two or three RTK GPS observations on May 30, 2019. The results were averaged and are shown below.

Langlade County Coordinate system Datum NAD83(2011)

PointNo.	Northing(Y)	Easting(X)	Description
3	350631.440	672702.570	IP BC FND APPROX. 43' NORTH OF CENTERLINE
7	350576.264	675355.049	IP BC FND APPROX. 67' NORTH OF CENTERLINE
11	350514.643	678033.658	IP BC FND APPROX. 64' NORTH OF CENTERLINE
23	350587.887	683461.923	IP FND APPROX. 89' NORT OF CENTERLINE
27	350597.086	686178.794	AL MON FND APPROX. 74' NORTH OF CENTERLINE
32	350606.160	688825.006	REBAR FND
43	350660.582	691454.397	IP BC FND APPROX. 60' SOUTH OF CENTERLINE
48	350720.775	694132.952	IP FND APPROX. 120' SOUTH OF CENTERLINE
59	350535.141	699551.928	NA FND

I, David E. Tlusty, Wisconsin Professional Land Surveyor, as Langlade County Surveyor, do hereby certify that on May 30, 2019, I made RTK GPS observations on the PLSS corners shown and described as shown hereon. I further certify that this map is a true and correct representation of said work performed in compliance with A-E 7 of the Wisconsin Administrative code and that this work is correct to the best of my knowledge and belief.

June 5, 2019

David E. Tlusty
David E. Tlusty, PLS
Langlade County Surveyor



RECORD # 20478
LANGLADE COUNTY SURVEYORS OFFICE
DATE FILED: 6/13/19 BY: D. TLUSTY