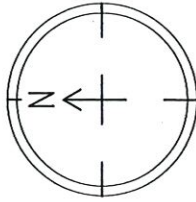
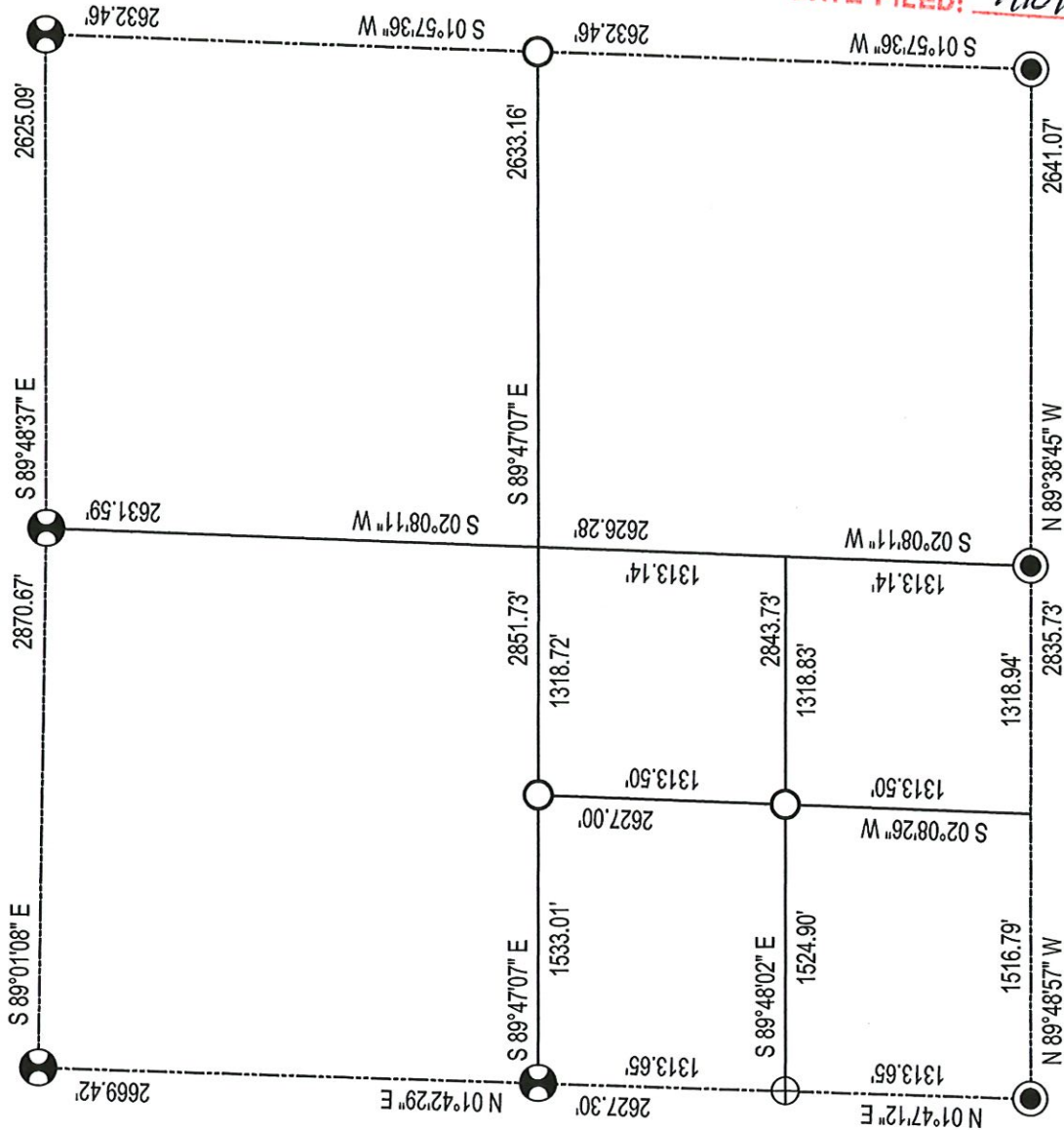


SECTION SUMMARY
LANGLADE COUNTY

Section 30
Township 31 N
Range 13 E
EVERGREEN
Town



Bearings are based on the Langlade County
Coordinate System NAD83 (2011).



RECORD # 11166
LANGLADE COUNTY SURVEYORS OFFICE
DATE FILED: 9/18/24 BY: D.T.



LEGEND

- 2.50" IRON PIPE WITH CAP
- 1.50" IRON PIPE
- 1.25" IRON PIPE
- BRASS CAP IN CONCRETE

KRISTOPHER T. SCHUMACHER

PLS-4001 Date: 8/15/2024

The Section Summary is Correct and complete to the best of my knowledge and belief.