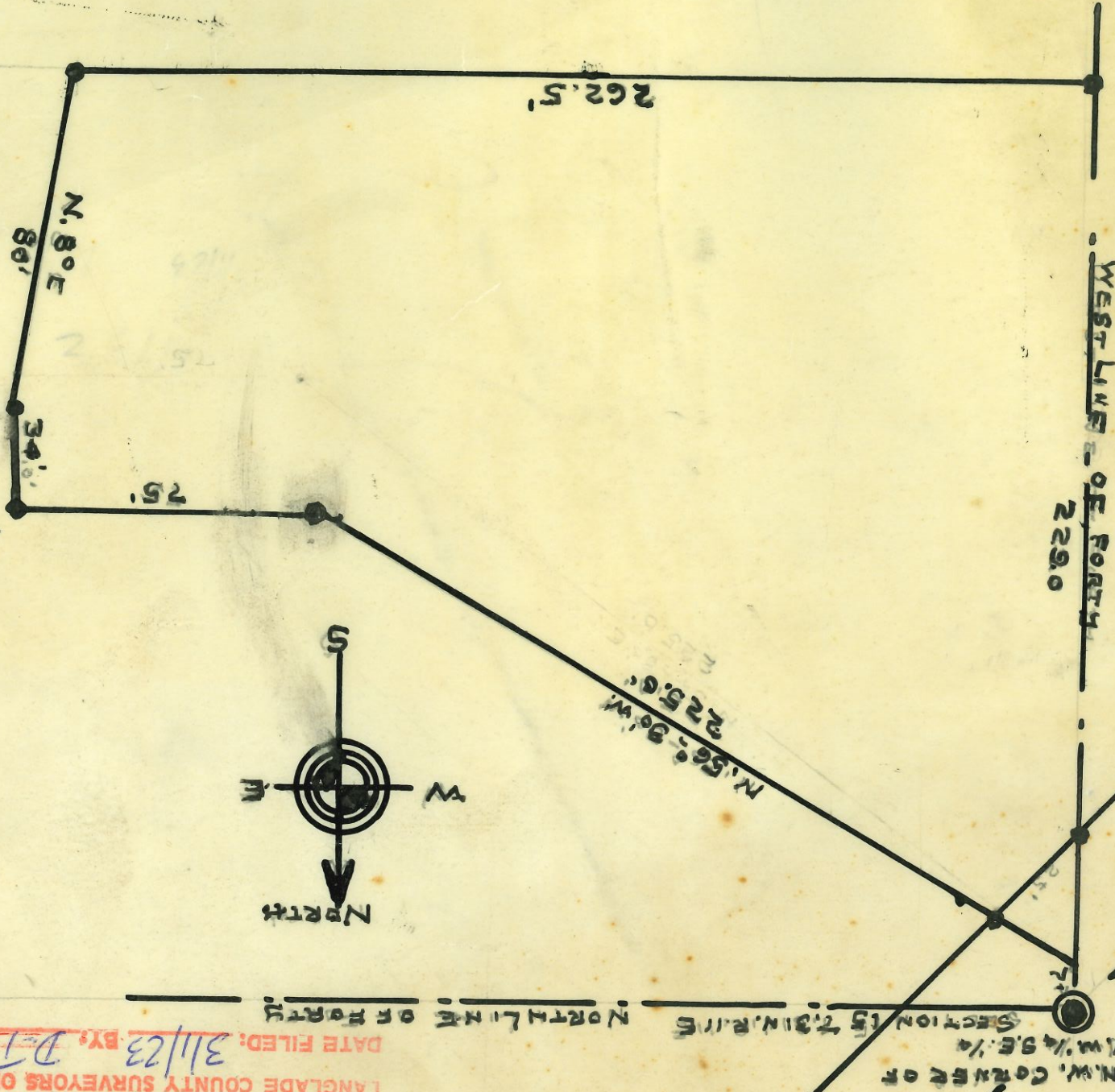


1133

RECORD #

LANGLADE COUNTY SURVEYORS OFFICE

DATE FILED: 3/1/23 BY: D.J.



N.W. CORNER OF SECTION 15 T.31N. R.15

WEST LINE OF FORTY 229.0

N. 56° 30' W. 225.6'

N. 8° E 80'

75'

34'

262.5'

S. 71° H. 52'

33'

33'