

# LANGLADE COUNTY MAP OF SURVEY

ALL OF THE NE1/4 OF THE SE1/4 AND THE EAST 1/2 OF THE NW1/4 OF THE SE1/4  
OF SECTION 2, TOWNSHIP 33 NORTH, RANGE 9  
EAST, TOWN OF SUMMIT, LANGLADE COUNTY WISCONSIN

RECORD # 11072  
LANGLADE COUNTY SURVEYORS OFFICE  
DATE FILED: 3/2/2021 BY: D. TLUSTY

C1/4 2-33-9 S89°32'17"E 2616.54' S89°32'17"E 654.13' POB1 S89°32'17"E 654.13' POB2 S89°32'17"E 1962.40' S89°32'17"E 1308.27' FND. 1.25" I.P. WITH NAIL AT CENTER E1/4 2-33-9

PARCEL 1  
028-0030.001  
EAST 1/2-NW1/4-SE1/4

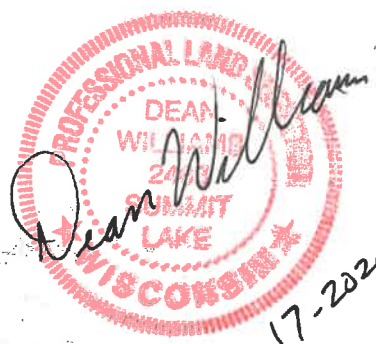
19.61 ACRES OR  
854,336 SQ. FT.  
OF WHICH  
.50 ACRES OR  
21,589 SQ. FT.  
ARE ROAD R/W

PARCEL 2  
DONALD AND CONNIE BRAYTON  
028-0029  
NE1/4-SE1/4

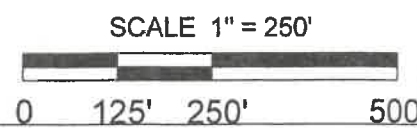
39.39 ACRES OR  
1,716,025 SQ. FT.  
OF WHICH  
.99 ACRES OR  
43,177 SQ. FT.  
ARE ROAD R/W

PARCEL 1: E-1/2 NW1/4-SE1/4  
COMMENCING AT THE S1/4 CORNER OF SECTION 2-33-9;  
THENCE N0°25'52"E, 2590.62 FEET TO THE C1/4; THENCE  
THENCE S89°32'17"E, 654.13 FEET TO A 1/64TH CORNER  
AND THE POINT OF BEGINNING OF PARCEL 1; THENCE  
CONTINUING S89°32'17"E, 654.13 FEET; THENCE S0°01'28"E,  
1302.85 FEET TO A 1/16TH CORNER; THENCE N89°12'45"W,  
659.32 FEET TO A 1/64TH CORNER; THENCE N0°12'10"E,  
1299.07 FEET TO THE POINT OF BEGINNING.  
PARCEL 1: E-1/2 NW1/4-SE1/4 CONTAINS 19.61 ACRES.

PARCEL 2: NE1/4-SE1/4  
COMMENCING AT THE S1/4 CORNER OF SECTION 2-33-9;  
THENCE N0°25'52"E, 2590.62 FEET TO THE C1/4; THENCE  
THENCE S89°32'17"E, 654.13 FEET TO A 1/64TH CORNER;  
THENCE CONTINUING S89°32'17"E, 654.13 FEET TO A  
1/16TH CORNER AND THE POINT OF BEGINNING FOR  
PARCEL 2; THENCE CONTINUING S89°32'17"E, 1308.27 FEET  
TO THE E1/4 OF SECTION 2-33-9; THENCE S0°28'28"E,  
1310.47 FEET TO A 1/16TH CORNER; THENCE N89°12'45"W,  
1318.65 FEET TO A 1/16TH CORNER; THENCE N0°01'28"W,  
1302.85 FEET TO THE POINT OF BEGINNING.  
PARCEL 2: NE1/4-SE1/4 CONTAINS 39.39 ACRES.



- LEGEND**
- ⊕ — FOUND .75" IRON ROD
  - ⊕ — FOUND ALUM. CAP. MON.
  - ⊙ — SET 1.5" X 24" I.P. 2 LBS/FT
  - — FOUND 1" CAPPED IRON PIPE
  - ▾ — WETLANDS



TIMBER WOLF LAND SURVEYING - PLS 2468

Drawn by DEAN WILLIAMS PLS-2468 ON SEPTEMBER 17TH, 2020