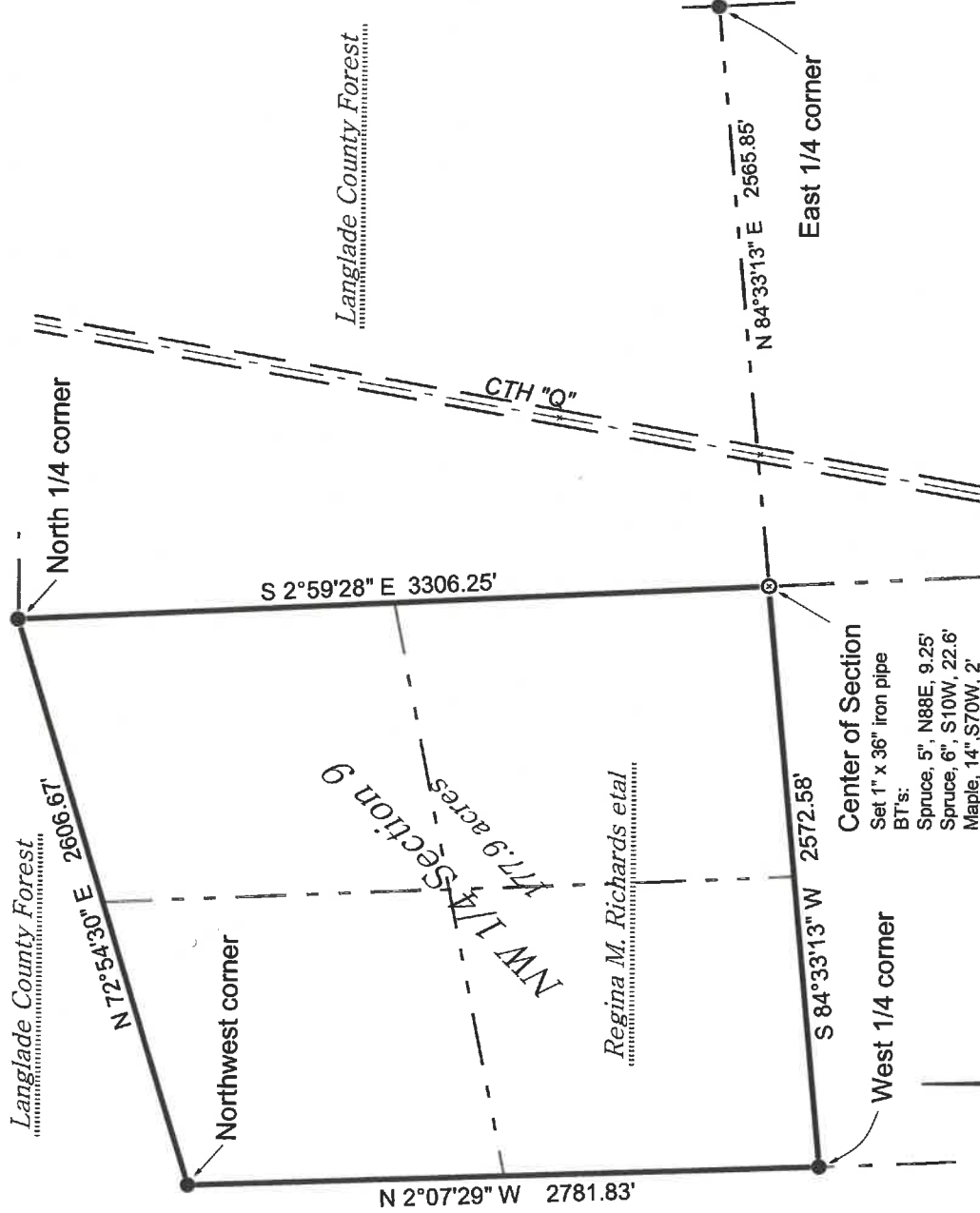


MAP OF SURVEY

for

Langlade County Forestry Department
 The Northwest Quarter of Section 9
 Township 34 North, Range 9 East, Langlade County, Wisc.

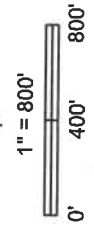


LANGLADE COUNTY COORDINATE SYSTEM GRID BEARINGS SHOWN

Langlade County Forest

Langlade County Coordinates NAD83(2011)

Desc	Northing	Easting
W1/4 corner	451484.17	561117.55
S1/4 corner	448960.51	563823.14
E1/4 corner	451971.87	566232.79
N1/4 corner	455030.09	563506.01
NW corner	454264.09	561014.42
Center	451728.34	563678.52

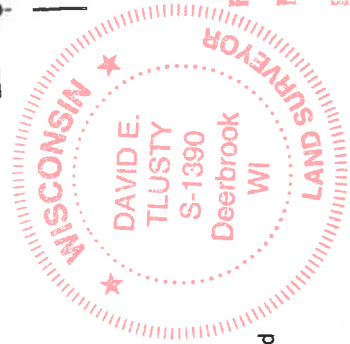


- 4" iron pipe with brass cap found
- 1" x 36" iron pipe set.

I, David E. Tlusty, Langlade County Surveyor, do hereby certify that by the direction of Erik Ranitala, Langlade County Forest Administrator, I have made a survey to locate the corners around the Northwest Quarter of Section 19, Township 34 North, Range 9 East, Langlade County, Wisconsin, as shown hereon. The section and quarter section corners shown have corner tie sheets on file in the County Surveyors office. I further certify that this map is a true and correct representation of the corner markers found and set and that this survey is correct to the best of my knowledge and belief.

David E. Tlusty 11/5/2021

David E. Tlusty, Langlade County Surveyor
 Wisconsin Professional Land Surveyor S-1390



RECORD # 11068
 LANGLADE COUNTY SURVEYORS OFFICE
 DATE FILED: 11/5/2021 BY: D. Tlusty