

BEARINGS REFERENCED TO THE LANGLADE COUNTY COORDINATE SYSTEM GRID.

RECORD # 11062  
LANGLADE COUNTY SURVEYORS OFFICE  
DATE FILED: 11/25/2020 BY: D. TUSTY

# PLAT OF SURVEY

PART OF THE NW1/4 SW1/4, SECTION 15, T30N-R11E,  
TOWN OF ROLLING, LANGLADE COUNTY, WISCONSIN

WEST 1/4 CORNER SECTION 15 FOUND ALUMINUM CAPPED MONUMENT  
LOT 1 CSM VOL. 6 PG. 71

LOT 1 CSM VOL. 18 PG. 17

MEADOW VISTAS PLAT LOT 26

NORTH 1/4 CORNER SECTION 15 FROM TIES

CENTER 1/4 CORNER SECTION 15 COMPUTED LOCATION

EAST 1/4 CORNER SECTION 15 FOUND RR SPIKE

NORTH LINE SW1/4 SECTION 15 N 89°42'30" E 2692.76'

S 89°42'30" W 1346.38'

NORTH 10.00 ACRES (435,600 SQ FT)  
OF THE NW1/4 SW1/4 OF SECTION 15, T30N-R11E

2614.64'

N 00°37'46" W

S 00°37'46" E 323.71'

33.00'

POINT OF BEGINNING

S 00°37'46" E 323.71'

33.00'

1313.38'

1346.38'

1346.38'

N 89°42'30" E 2652.71'

2635.84'

S 00°07'48" E 1317.92'

N 89°42'30" E 1344.96'

NW1/4 SW1/4

UNPLATTED LANDS OF SCHUMACHER

NE1/4 SW1/4

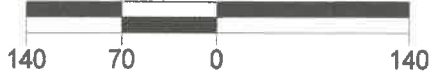
LOT 1 CSM VOL. 18 PG. 138

SE1/4 SW1/4

### LEGEND

- △ COMPUTED POINT
- FOUND 1" IRON PIPE
- SET 1.05" O.D. X 18" LONG IRON PIPE WEIGHING 1.13 LBS/LF

SCALE: 1 INCH = 140 FEET



WEST LINE SW1/4 SECTION 15

66" WIDE R-OW

983.61'

1307.32'

N 89°56'07" E 1340.68'

SW1/4 SW1/4

1340.68'

1335.00'

SOUTH LINE SW1/4 SECTION 15

N 89°50'09" W

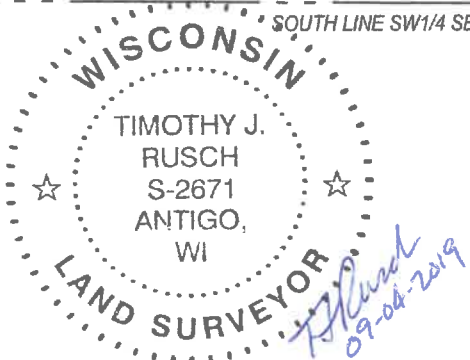
2670.00'

1335.00'

SOUTH 1/4 CORNER SECTION 15 FOUND ALUMINUM CAPPED MONUMENT

SW CORNER SECTION 15 FOUND ALUMINUM CAPPED MONUMENT

SURVEYED BY:  
RUSCH ENGINEERING & SURVEYING LLC  
400 RUSCH ROAD  
ANTIGO, WI 54409  
(715)623-5044  
PROJECT #19-6022  
FIELDWORK COMPLETED 07/29/2019



I, Timothy J. Rusch, Professional Land Surveyor, do hereby certify:

That I have surveyed and mapped by the order of Dan VanOoyen, a part of the NW1/4 of the SW1/4 of Section 15, T30N-R11E.

That this survey was for the purpose of locating certain property boundaries only. Other geographical features were not mapped.

That this is a true and correct representation of the boundaries surveyed to the best of my knowledge and belief.

### Description:

Beginning at the West 1/4 Corner of Section 15; Thence S00°37'46"E, along the West line of the SW1/4 of said Section 323.71 feet; Thence N89°42'30"E, 1344.96 feet; Thence N00°22'43"W, along the East line of the NW1/4 SW1/4, 323.71 feet; Thence S89°42'30"W, along the North line of said NW1/4 SW1/4, 1346.38 feet to the Point of Beginning.