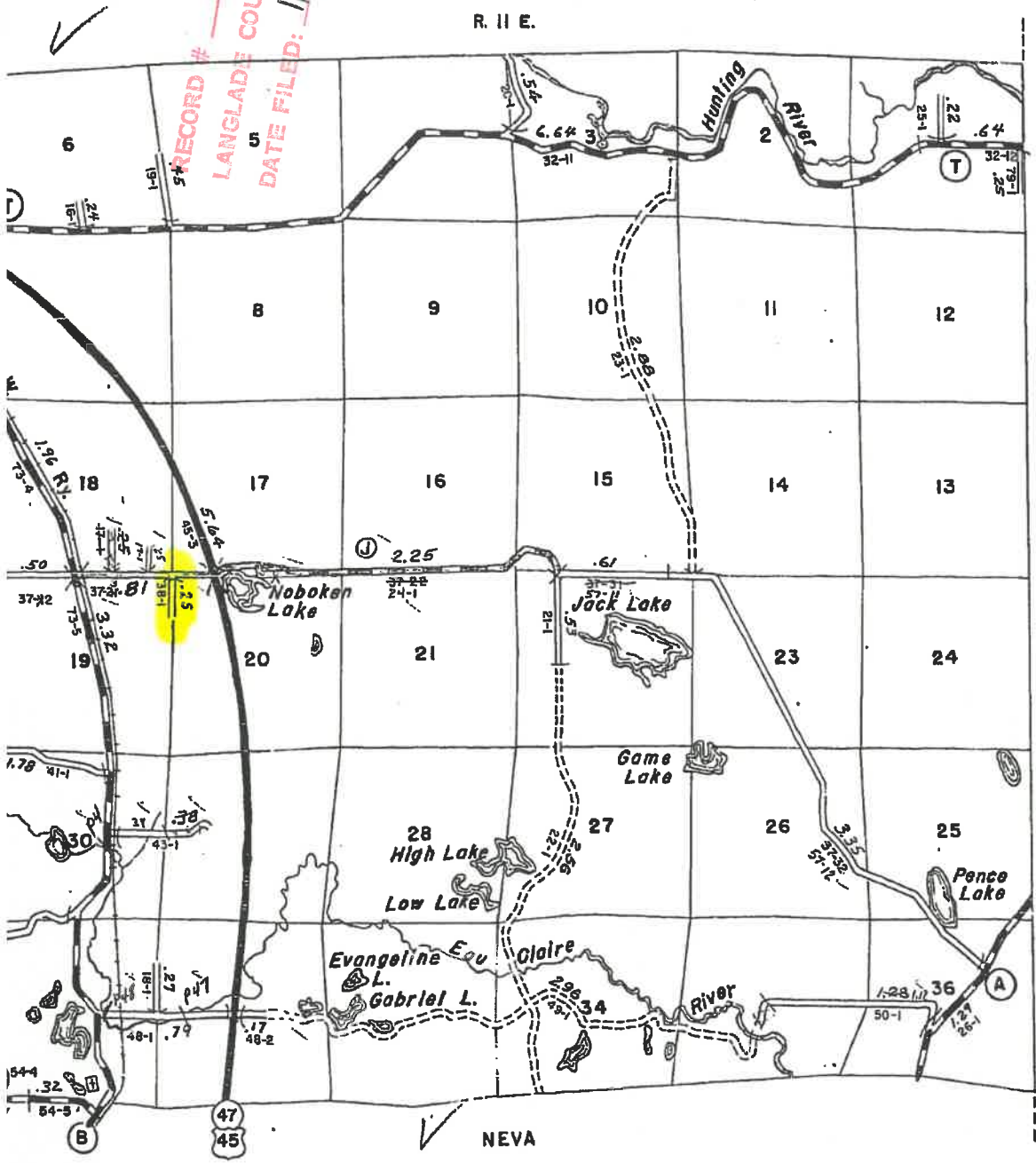


1961

RECORD # 10967 17
 LANGLADE COUNTY SURVEYORS OFFICE
 DATE FILED: 1/12/18 BY: D.T



Certified as Correct By Town Chairman: *[Signature]*
 Date Made: 4-7-61
 45.64' 192' 45.24' T. 33 N.
 AINSWORTH

STATE HIGHWAY COMM. OF WISCONSIN
 TOWN PLAT RECORD

Town: UPHAM County: LANGLADE (34-015A)

Date of Last Corr.	State Fire Lane	State Trunks	County Trunks	Local Roads	Symbols
1-1-64	17.82	7.10	20.17	47.70	Sch. 1
1-1-65	17.82	7.10	20.17	47.70	Cam. B
1-1-66	17.82	7.10	20.17	47.70	
1-1-67	17.82	7.10	20.17	47.70	
1-1-68	17.82	7.10	20.17	47.70	
1-1-69	17.82	7.10	20.17	47.70	
1-1-70	17.82	7.10	20.17	47.70	

Scale 0 1.0 Mile

RECORD # _____
 LANGLADE COUNTY SURVEYORS OFFICE
 DATE FILED: _____
 BY: _____

10967 417

LANGLADE COUNTY SURVEYORS OFFICE

15-17
1935

Pd
1936

TOWN PLAT RECORD - WISCONSIN HIGHWAY COMMISSION TOWN OF UPHAM, COUNTY OF LANGLADE.

TABLE OF MILEAGES			
Date of last Correction	State Trunks	County Trunks	Local Roads
12-23-27	6.45	7.92	32.36
12-22-30	✓	✓	-
11-27-31	-	-	32.36
11-10-32	✓	11.98	38.70
12-11-34	15.51	6.45	11.98
12-12-35	-	-	38.20

- LEGEND -

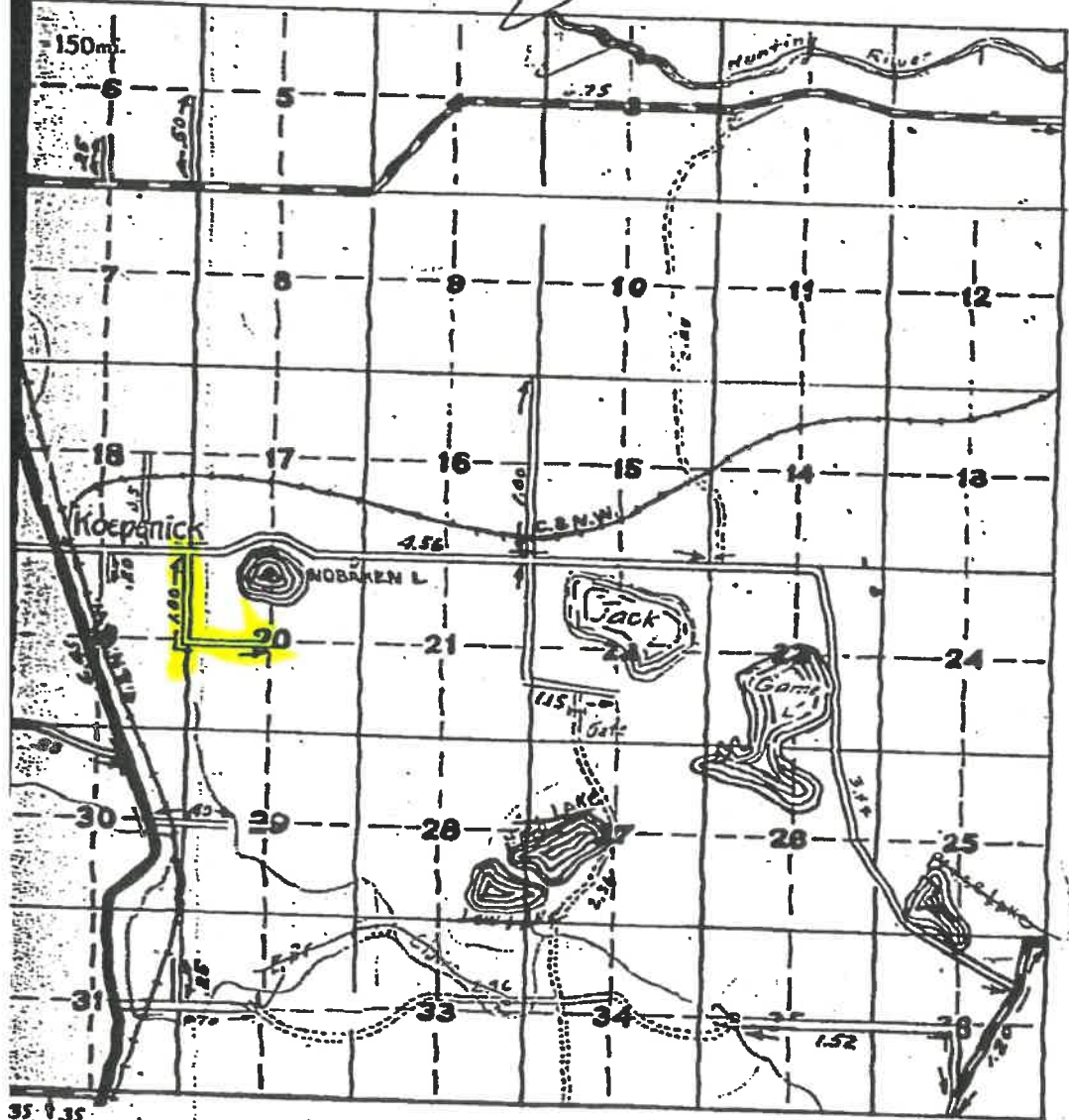
State Trunk Highway System

County Trunk Highway System

Town Roads

Fire Lanes

T. 35 N. - R. 10 & 11 E.



35 N. 35
N. U.

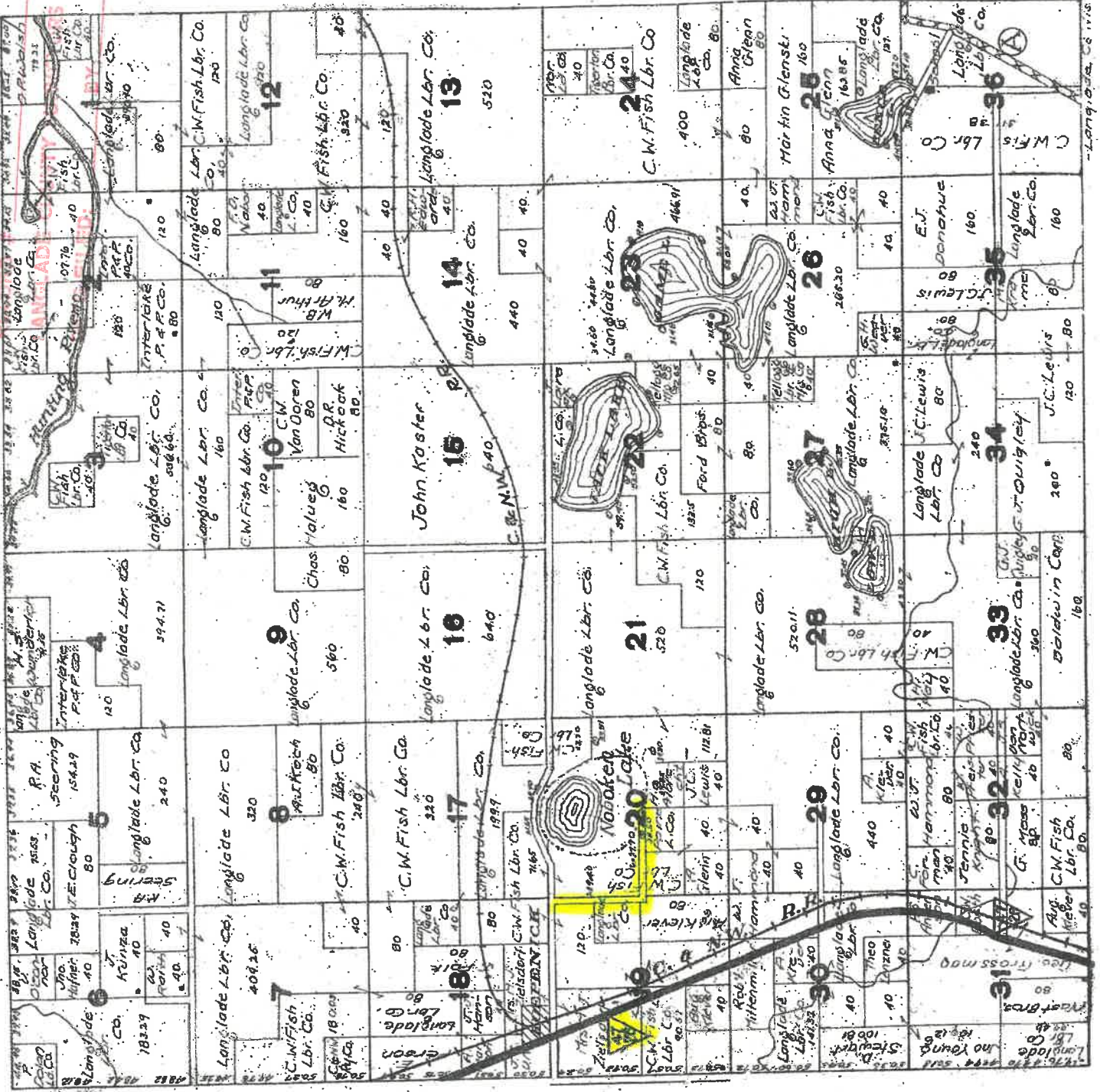
Certified as Correct:

Town Chairman

T.33N. UPHAM R.1E.

LANGLADE 10967

OFFICE



1570

10967 6/7

RECORD #

LANGLADE COUNTY SURVEYORS OFFICE

BY:

DATE FILED:

OMIT

STA. 452+05 TN. RD. LT.

24" X 36" Pipe Cul. Req'd

150'

MAPLE B

ELM

E.W. END TREE LINE

OPEN

455

PASTURE

born

CHES

CULT. FIELD

450

Town Road
B STPS
Mason Ln

100'

14" STUMP
1-6" ASP
1-5" ASP

460

10" ASP

10" ASP

10" ASP

10" ASP

STA. 452+05 TN. RD. RT.

24" X 36" Pipe Cul. Req'd

150'

OMIT

END ROCK FENCE

END TREE LINE

Dig Off-Take Ditch -



NET LENGTH OF CENTERLINE STA. 450+00 - 480+00 = 3000 LIN. FT.

C = 8,393 C.Y.

F = 6,916 C.Y.

Shg. 35%

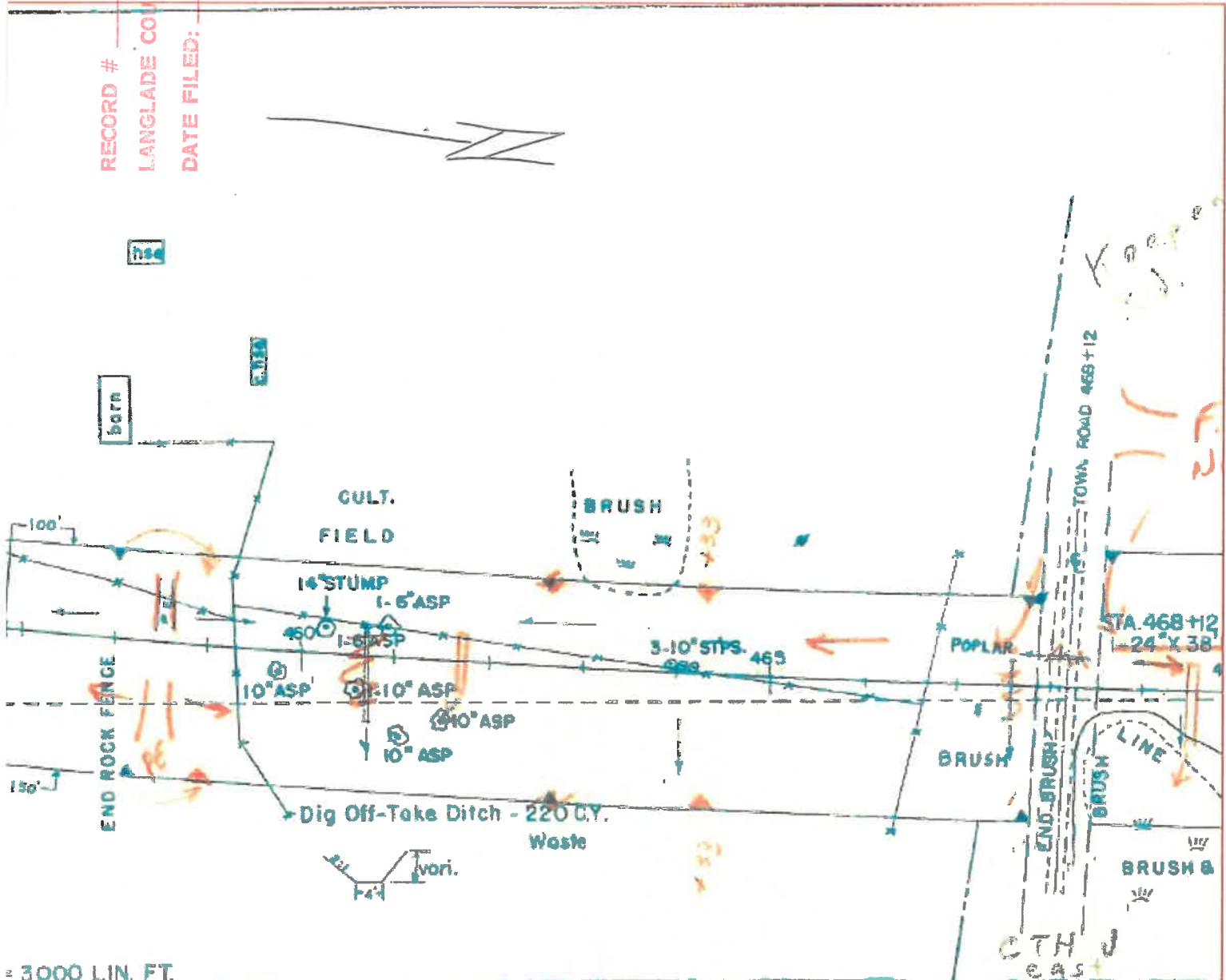
10967 7/7

RECORD #

LANGLADE COUNTY SURVEYORS OFFICE

DATE FILED: BY:

As Built 1956±



3000 LIN. FT.

8.393 C.Y.
 6.916 C.Y.
 10.35%

C = 5,627 C.Y.
 F = 3,977 C.Y.
 Sng = +0%