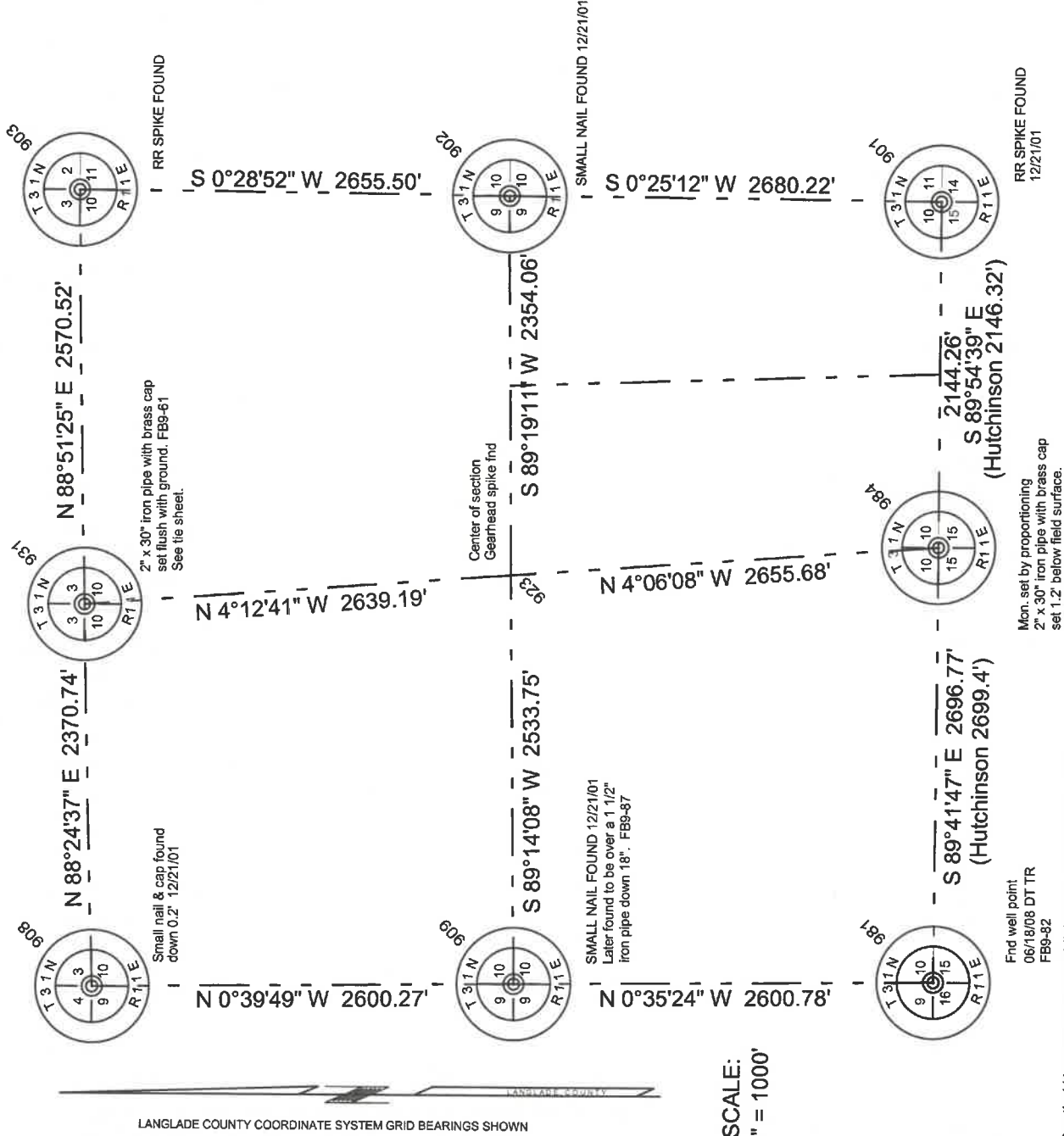


Sections 10, Township 31 North, Range 11 East



SCALE:
1" = 1000'

Note: South 1/4 corner was established on an extension of a line from the SE corner, westerly through a fence corner in vicinity of 16th corner (at which point Mr. Paniek said there used to be a pipe) and by proportioning M. Hutchinsons distances as shown.

Langlade County Coordinate System Grid bearings shown. The grid to geodetic convergence angle at the SW corner of Section 10 is -0°04'46". To convert grid azimuths to geodetic azimuths, add the convergence angle to the grid azimuths.

PointNo.	Northing(Y)	Easting(X)	Description
901	353566.765	635335.092	RR SPKFD SECCOR
902	355246.913	635354.745	NAIL QCOR
903	358902.317	635377.044	RR SPKFD SECCOR
908	358785.262	630437.206	NAIL SECCOR
909	356185.168	630467.324	NAIL OVER IP FND QCOR
923	356218.969	633000.851	NAIL CTR SEC10
931	358851.034	632807.036	IP SET 1/4X
981	353584.386	630494.104	RTK WELLPT FND SEC COR
984	353570.094	633190.831	1/4x mon set proportion

RECORD # 10961
 LANGLADE COUNTY SURVEYORS OFFICE
 DATE FILED: 9/4/18 BY: D. Tlusty



I, David E. Tlusty, Langlade County Surveyor, do hereby certify that I have made a survey of Section 10, Township 31 North, Range 11 East, Langlade County, Wisconsin as shown hereon. I further certify that this map is a true and correct representation of said survey and that this survey is correct to the best of my knowledge and belief.

David E. Tlusty
 David E. Tlusty, PLS
 Langlade County Surveyor

09/04/2018