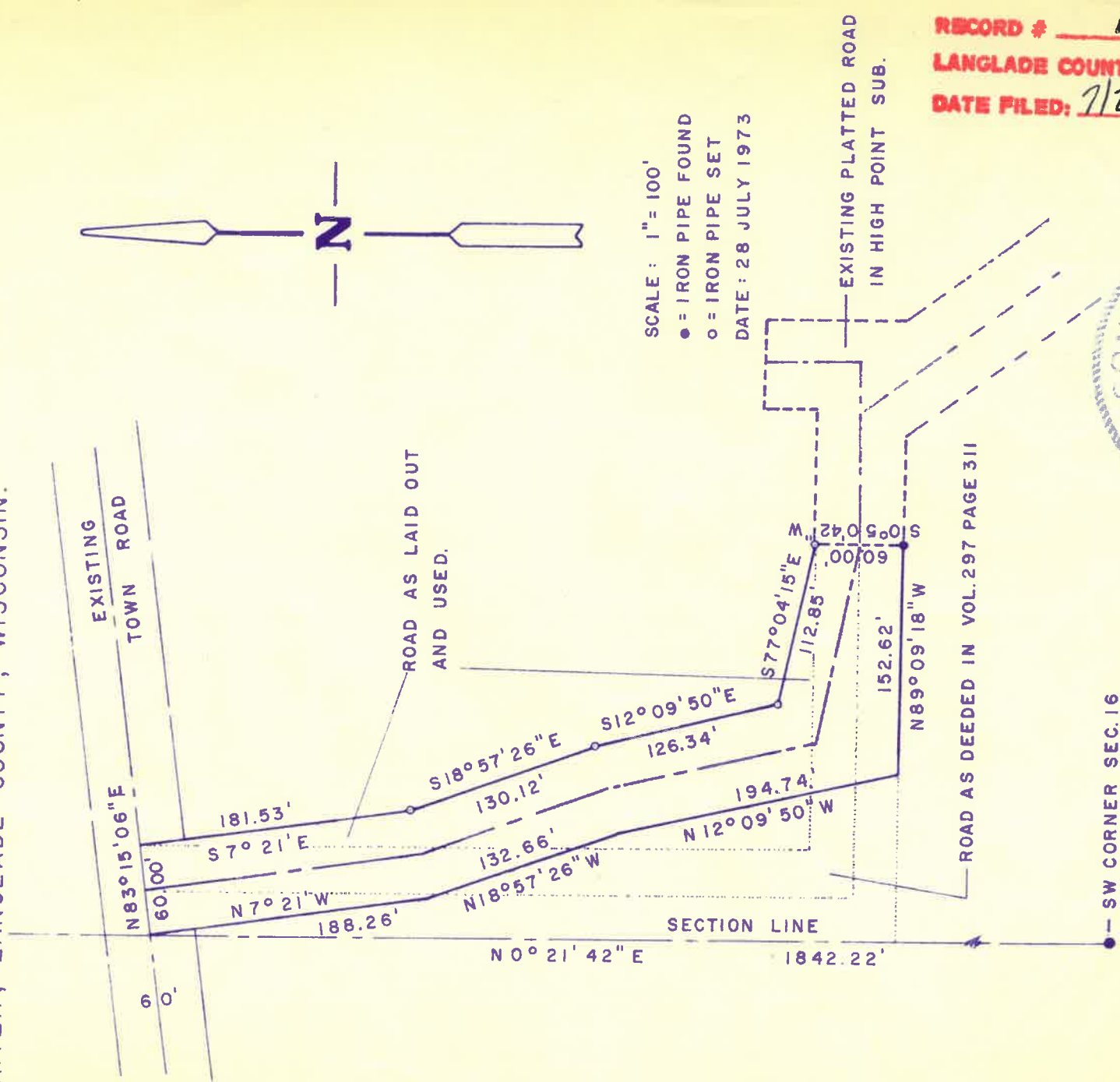


MAP OF SURVEY FOR LEONARD HEISE

PART OF GOV'T LOT 5, SEC. 16, T32N, R14E, TOWN OF WOLF RIVER, LANGLADE COUNTY, WISCONSIN.



RECORD # 10645
 LANGLADE COUNTY SURVEYORS OFFICE
 DATE FILED: 7/2/04 BY: D. TUSTY



Thomas P. Arnott