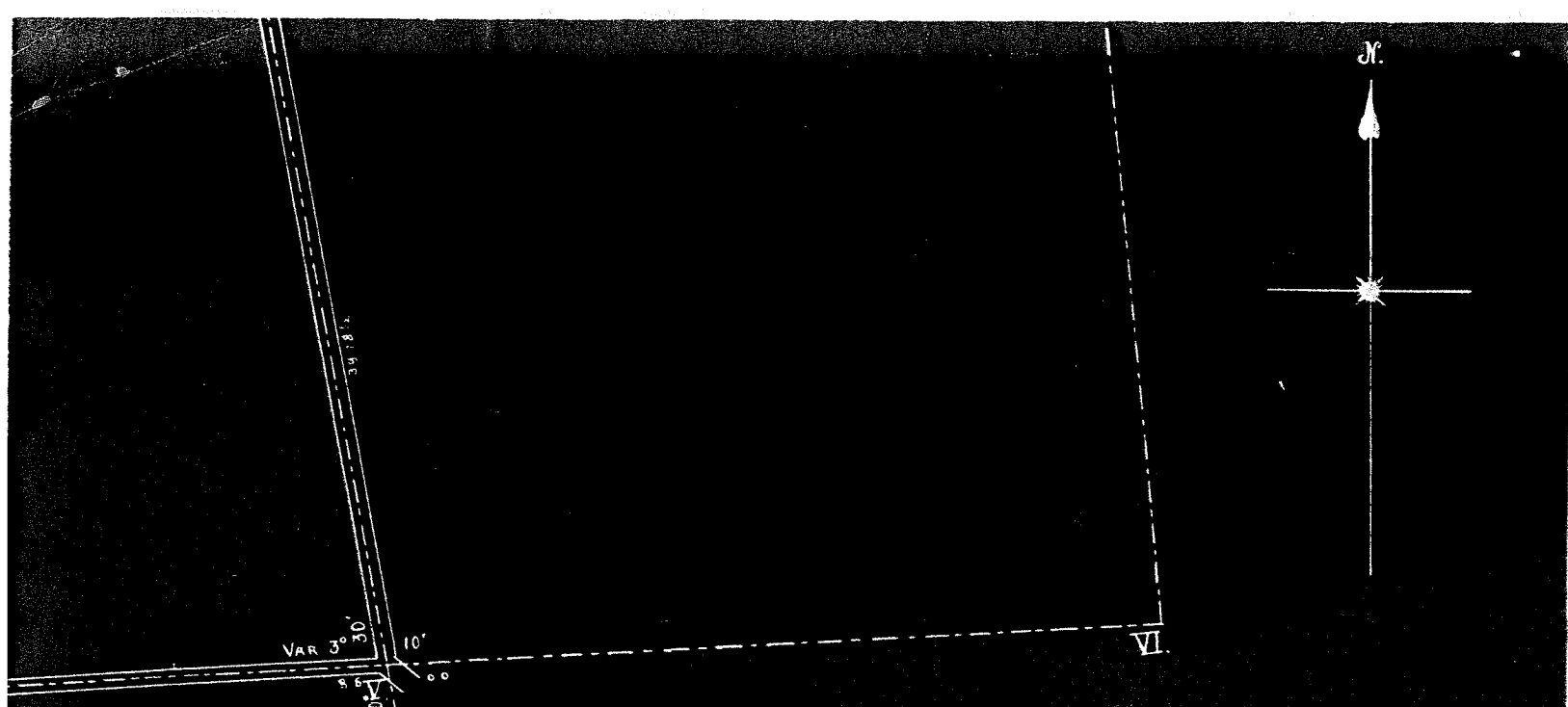
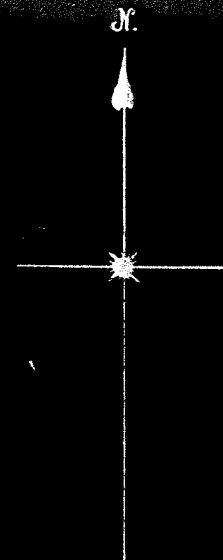


10460  
10460

COUNTY SURVEYORS OFFICE

1/7/99 BY: D. Hardy



ificate....

I hereby certify that I have  
 thirty-one (31) north of  
 day of September, 1894.  
 of the town of Antigo  
 on the within map  
 placed near each line  
 thin map, and the wit-  
 in the lower right hand

D. Hardy  
 Surveyor

VII

I. Basswood 24 S 54 W 15 6 1/4

" 16 S 68 W 11 2 1/2

Elm 12 S 38 E 30

Piece of R. I. iron 16 1/4 in long; 2 holes,  
 one 2 in. from top the lower 6 3/8 in. from top  
 4 in. through.

II. Body of a cylinder 3 x 10 manufactured  
 by Johnson. Witnessed as follows: 3 ft. 0 in.  
 hole made with a post hole auger, filled with  
 1 whole brick, 6 pieces some broken plaster  
 and stones. S. 54 E 61 1/2

III. 3 ft. 6 in. hole made with a post hole  
 auger; placed on top of a pump with 3 set  
 screws; put blue soil in the bottom of  
 hole and placed therein a cedar post 4  
 in. square, pointed on bottom.

II Sugar 10 N 70 E 12  
 Birch 18 S 25 W 18

V 4 ft. hole made with a post hole auger  
 put a single bit axe in bottom, then  
 set a cedar post 4 in. square

VI White pine 30 S 54 W 54  
 41 S 74 E 86 3/4  
 A single bit axe and a piece of pig-  
 steel with 5 1/2 lbs.

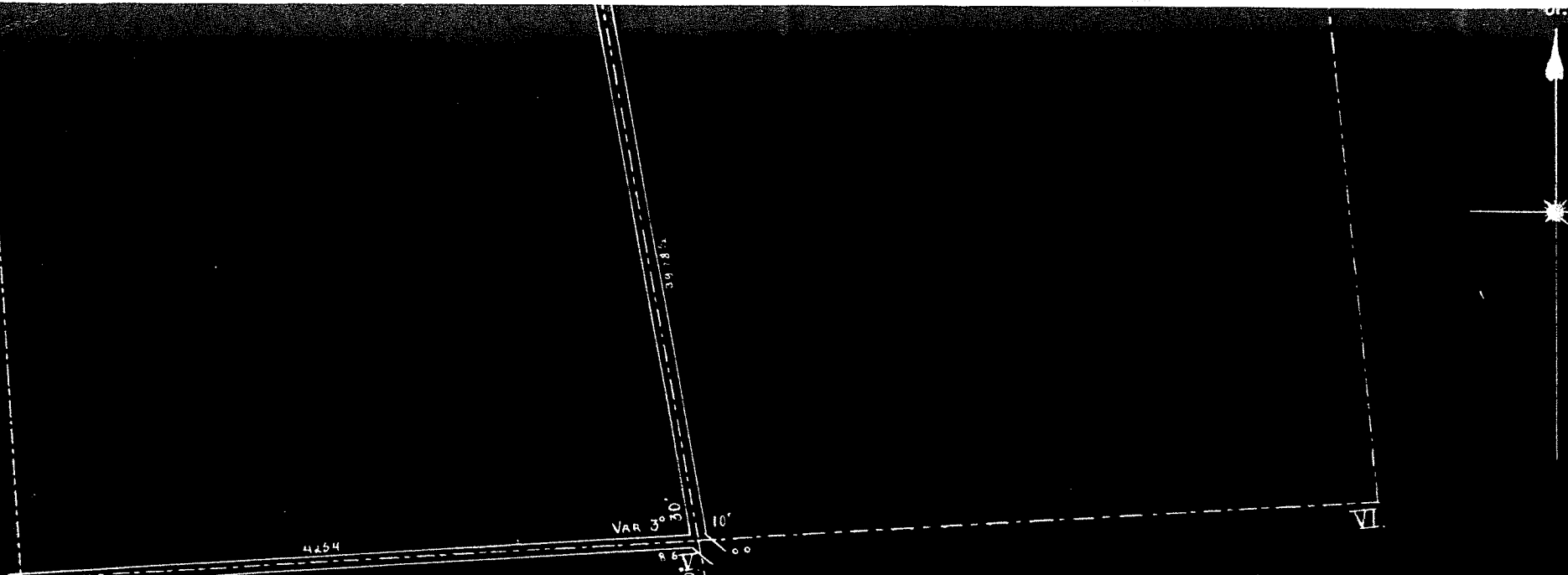


VII Spruce 7 N 34 W 10  
 Tamarac 12 S 42 W 21

...Surveyor's Certificate....

I, Joseph Duchac, Surveyor, hereby certify that I have surveyed that part of Sec six, (6) in town thirty-one (31) north of range eleven (11) East, on the fifteenth day of September, 1894, by the direction of the road commissioner of the town of Antigo and have established the corners as shown on the within map from I to VII. The distances are placed near each line between the points as shown on the within map, and the witness trees to each corner are described in the lower right hand corner of this map.

Joseph Duchac  
County Surveyor



- I. Basswood 24 S 54 W 15 6 1/4
- " 16 S 48 W 11 2 1/2
- Elm 12 S 38 E 30

Piece of R.R. iron 16 1/4 in long, 2 holes, one 2 in from top, the lower 6 3/8 in from top, 4 in through.

- II. Box of a cylinder 3x10 manufactured by Thacker. Witnessed as follows: 3 ft. 0 in. hole made with a post hole auger, filled with 1 white brick, 6 pieces some broken plaster and stones. S. 54 E 6 1/2.

- III. 3 ft. 6 in. hole made with a post hole auger; placed a top of a pump with 3 set screws; put blue soil in the bottom of hole and placed therein a cedar post 4 in. square, painted on bottom.

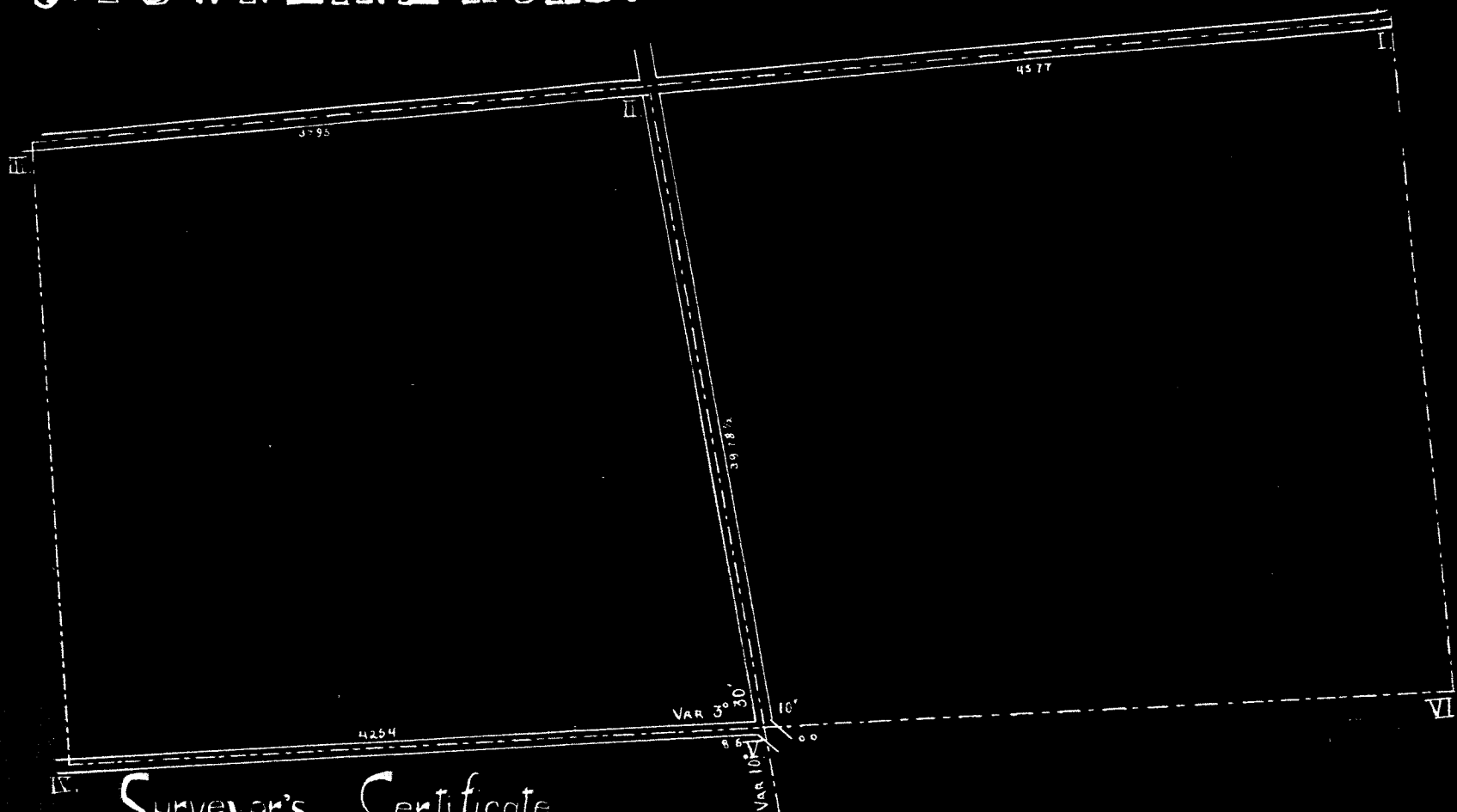
- II. Sugar 10 N 70 E 12
- Birch 15 S 25 W 18

- V. 4 ft. hole made with a post hole auger; placed a single bit axe in it and set a cedar post 4 in. square.

- VI. White-pine 30 S 51 W 50
- 40 N 40 E 8
- a single bit axe and a post hole auger, with 5 T. holes.

- VII. Spruce 7 N 34 W 10
- Tamarac 12 S 42 W 21

# TOWNLINE ROAD.



## ...Surveyor's Certificate...

I, Joseph Duchac, Surveyor, Hereby certify that I have surveyed that part of Sec. six (6) in town thirty-one (31) north of range eleven (11) East, on the fifteenth day of September, 1894, by the direction of the road commissioner of the town of Antigo and have established the corners as shown on the within map from I to VII. The distances are placed near each line between the points as shown on the within map, and the witness trees to each corner are described in the lower right hand corner of this map.

Joseph Duchac

I. Basswood 24 S 54 W 15 6 3/4

16 S 68 W 11 2 1/2

Elm 12 S 38 E 30

Piece of R. R. iron 16 3/4 in long, 2 holes,  
one 2 in. from top, the lower 6 3/8 in. from top,  
4 in. through.

II. Sugar 10 N 70 E 12  
Bald 15 S 25 W 18

V 4 ft. hole made with a post  
put a single bit over in  
set a cedar post 4 in. by

VI White-pine 30 S 51 W  
40 N 40 E

II. Beyond on line...