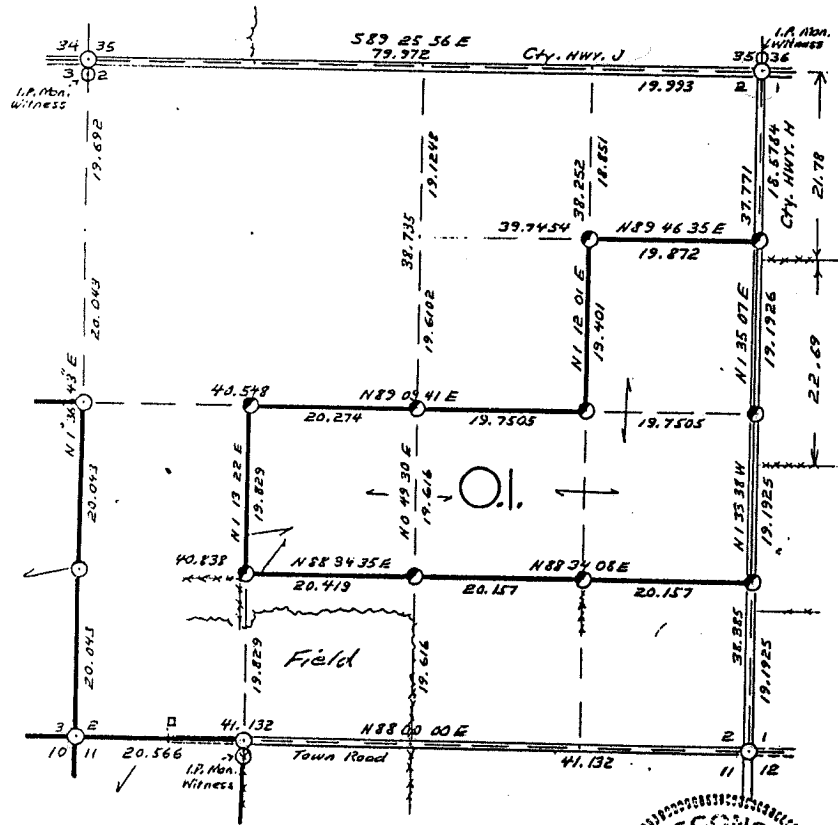


SEC. 2, T.32 N., R. 9 E.,  
LANGLADE COUNTY, WIS.



- COR. BT. CODE  
A B C D E  
F G H I J  
K L M N O  
P Q R S T  
U V W X Y

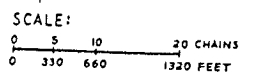
See County corner restoration forms for corner details



William H. Stuth

**OWENS-ILLINOIS**  
TOMAHAWK WISCONSIN  
FOREST PRODUCTS DIVISION

O.I. Boundary Survey  
DRAWN BY W.H. Stuth  
DATE 11/19/82



- LEGEND: CORNERS & LINES
- IRON PIPE OR CAP
  - ⊙ CONCRETE
  - ⊕ POST
  - △ STAKE
  - + SPIKE
  - Set this Surv.
  - BLAZED - PAINTED
  - BLAZED
  - APPR. - PAINTED
  - RANDOM
  - \*\*\* FENCE

PREPARED BY William H. Stuth DATE 11/19/82

**B FILE**

RECORD # ~~10413~~ 10414

LANGLADE COUNTY SURVEYORS OFFICE

STATEMENT

DATE FILED: 9/20/94 BY: D.T.

The exterior boundary of this section is based on early 1900 M. Hutchinson surveys in this area, and assistance from Wm. F. Kelly - County Surveyor. See county Corner Restoration Forms for details.

RECORDS EXAMINED \_\_\_\_\_ DWG. NO. \_\_\_\_\_  
Org. Gov't. notes & plat City. Surv. Office  
M. Hutchinson notes " " "

LOCAL CONTACTS \_\_\_\_\_  
City. Hwy. Dept. (Nothing to offer)  
Town Clerk ( " " " )  
Neighbors ( " " " )

REMARKS \_\_\_\_\_